

Samy's Camera

RENTAL CATALOG

EST. 1976



[SAMYS.COM](https://www.samys.com)

LOS ANGELES • PLAYA VISTA • PASADENA
SANTA ANA • SANTA BARBARA • SAN FRANCISCO

Samy's
Locations

PROFESSIONAL LOCATION SERVICES
24 HOUR CONCIERGE SERVICE



**WE OFFER DELIVERY AND PICKUP
FOR ALL OF YOUR PRODUCTION NEEDS!**

**PHOTO • LIGHTING • CAMERAS
MOTION • STYLING • PRODUCTION SUPPLIES
PRE-LOADED TRUCKS
24 HOUR SUPPORT / 7 DAYS A WEEK**



THE TEAM



EMAIL US!
LOCATIONS@SAMYS.COM



CALL OR TEXT US!
310.795.0043

SAMY'S RENTAL LOCATIONS

Los Angeles

431 S. Fairfax Ave., Los Angeles, CA 90036

Tel: (323) 938-4400

Fax: (323) 938-0947

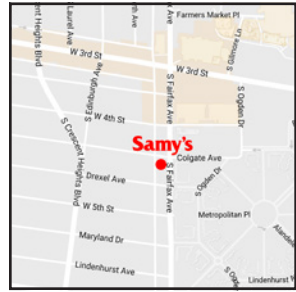
Email: rentals@samys.com

Film & Rental Hours: Mon-Fri: 8am-6:30pm;

Sat: 9am-6pm; Sun: 11am-5pm

Store Hours: Mon - Fri: 9:30am - 6:30pm;

Sat: 10am - 6pm; Sun: 11am - 5:00pm



Playa Vista

12636 Beatrice St., Los Angeles, CA 90066

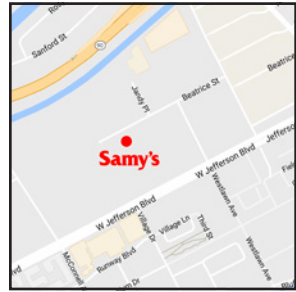
Tel: (310) 450-7062

Fax: (310) 450-3832

Email: pvrentals@samys.com

Hours: Mon - Fri: 8am - 6pm;

Sat: 9am - 2pm; Sun: CLOSED



Pasadena

1759 E. Colorado Blvd., Pasadena, CA 91103

Tel: (626) 796-3300

Fax: (626) 432-6731

Email: pdrentals@samys.com

Hours: Mon - Fri: 8am - 6pm;

Sat: 10am - 6pm; Sun: 11am - 5pm

Rental is CLOSED on Sunday.



Samy's Locations

24-Hour Premium Rental Service

Professional Location Rental Services

Tel: (310) 695-0043

Email: locations@samys.com



SAMYS.COM

SAMY'S RENTAL LOCATIONS

Santa Ana

3309B S. Bristol St., Santa Ana, CA 92704

Tel: (714) 557-9400

Fax: (714) 708-2454

Email: sarentals@samys.com

Hours: Mon - Fri: 9:30am - 6:30pm;

Sat: 10am - 6pm; Sun: 10am - 6:00pm

Rental is CLOSED on Sunday.



Santa Barbara

530 State St., Santa Barbara, CA 93101

Tel: (805) 963-7269

Fax: (805) 963-4100

Email: sbrentals@samys.com

Film & Rental Hours: Mon - Fri: 9am - 6pm;

Sat: 9:30am - 3pm

Rental is CLOSED on Sunday.

Store Hours: Mon - Fri: 9am - 6pm;

Sat: 9:30am - 6pm; Sun: 11am - 5pm



San Francisco

1090 Bryant St., San Francisco, CA 94103

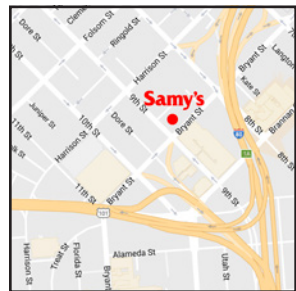
Tel: (415) 621-7400

Email: sfrentals@samys.com

Hours: Mon - Fri: 9am - 6pm;

Sat: 9:30am - 6pm; Sun: CLOSED

Rental is CLOSED on Sunday.



SAMYS.COM

Weekend Rental

Pick-Up Rental after 3pm on Friday and Return Rental the following: Monday before 11am and pay for 1 Day Rental.

Sunday pick-up anytime, return Tuesday by 11am, pay 1 Day Rental.

Daily Rates

Pick-up *BEFORE* 3 pm and return within 24 hours for 1 day rental charge.

Pick-up *AFTER* 3 p.m. and Rental begins next day.

Return must be made before 11am next day.

(e.g. Pick-up Monday after 3pm, return Wednesday by 11am)

Weekly Rates

3 day week: Keep Rental for 7 consecutive days and pay for 3 days.

Some items are on a **4 day week:** Keep Rental for 7 consecutive days and pay for 4 days.

Samy's Camera PRO RENTAL STAFF will be happy to CUSTOMIZE rental packages upon request.

For long term rentals please inquire about PACKAGE DISCOUNTS!

For nearly 40 years Sammy's Camera has been the leader in high quality imaging products and the ultimate resource for both the professional and amateur photographers and videographers. Knowledgeable staff, exceptional customer service and an expansive inventory that is constantly being updated are many reasons that Sammy's Camera has a loyal following.

Founded in 1976 the company has grown to 7 locations located throughout Southern California, with its flagship store located on Fairfax Boulevard in the heart of Los Angeles. Each location is fully stocked with the latest and most exciting selections of photographic, video and electronic equipment available.

Sammy's Camera Rentals stocks and supports a full range of still and motion cameras, lenses, lighting, stabilization and grip equipment. SCR is the west coast's "one-stop" destination for all your industry needs.

Our Mission and ultimate goal is provide the creative community with a rental source that provides a large inventory of the latest equipment as well as rental personnel that can help you with your equipment needs. Our gear goes through rigorous quality control testing and is maintained by only factory service providers. Our professional staff will be happy to help you with any questions you may have, and we will do our best to work within your budget.

We look forward to working with you.

Sammy's Camera Rental Staff

TABLE OF CONTENTS

LOCATIONS AND RATES

SAMY'S RENTAL LOCATIONS	iii
RENTAL RATES	v
ABOUT US	vi
TABLE OF CONTENTS.....	vii

DIGITAL CAMERAS, LENSES & FLASHES

CANON DIGITAL CAMERAS	1
CANON LENSES	4
CANON LENSES & FLASHES	5
ROKINON CINE DS LENSES (EF MOUNT)	5
NIKON DIGITAL CAMERAS.....	6
NIKON AUTOFOCUS LENSES.....	9
NIKON MANUAL LENSES.....	11
NIKON FLASHES & ACCESSORIES.....	11
ZEISS LENSES (35MM SLR MOUNT)	12
SIGMA LENSES.....	13
SIGMA CINE LENSES	13
TOKINA LENSES	13
ADAPTERS.....	14
LEICA CAMERAS	15
LEICA LENSES	15
SONY DIGITAL CAMERAS.....	16
SONY LENSES	16
ZEISS LENSES	16

MEDIUM FORMAT

PHASE ONE DIGITAL CAMERA BACKS.....	17
PHASE ONE LENSES.....	18
PENTAX MEDIUM FORMAT	18
HASSELBLAD DIGITAL CAMERA BACKS	19
HASSELBLAD H SERIES LENSES	20
HASSELBLAD CAMERAS	21
HASSELBLAD V SERIES LENSES.....	22
HASSELBLAD ACCESSORIES.....	23
MAMIYA CAMERAS.....	24
MAMIYA RZ LENSES	25
ALPA CAMERAS.....	26

TABLE OF CONTENTS

COMPUTERS

APPLE MACINTOSH COMPUTERS.....	27
APPLE MACINTOSH DISPLAYS	28
EIZO DISPLAYS.....	28

UNDERWATER

SURF & SPLASH HOUSINGS.....	29
SOLA CONTINUOUS LED LIGHTING	29

CINEMA

CANON CINEMA EOS	30
------------------------	----

HDSLR

ZACUTO Z-FINDER	31
PANASONIC MIRRORLESS CAMERAS.....	31
MICRO 4/3 LENSES	31

VIDEO

CANON CAMCORDERS.....	32
GO PRO ACTION CAMERAS.....	33
SONY CAMCORDERS	34
SONY DECKS.....	35
CAMERA STABILIZATION.....	36

SUPPORT SYSTEMS

REDROCK MICRO	37
ARRI CAMERA SUPPORT SYSTEMS	39
GLIDECAM STABILIZERS	40
STEADICAM STABILIZERS	40
CAMERA SUPPORT SYSTEMS.....	41

VIDEO RECORDERS & TRANSFER

VIDEO RECORDERS.....	42
WIRELESS VIDEO TRANSFER.....	43
MONITORS	44

PROJECTORS

MULTIMEDIA PROJECTORS	46
CASIO PROJECTORS	46

TABLE OF CONTENTS

LIGHTING EQUIPMENT

PROFOTO	47
BRONCOLOR	51
DYNALITE STROBES	55
PHOTOGENIC SYSTEM	55
SOFT LIGHTS	56
QUANTUM FLASHES AND SLAVES	57
MONOBLOCKS	58
LED / TUNGSTEN / HMI	58
HMI LIGHTING	59
BRIESE LIGHTING & ACCESSORIES	61
PHOTOTOOLS LIGHT MODIFIERS	61
KINO FLO LIGHT BANKS	62
PHOTOFLEX STARLIGHT OCTA KIT	62
TUNGSTEN HOT LIGHTS	63
LED LIGHTING	63
LIGHT BANKS	64
POCKET WIZARD REMOTE TRIGGERS	65
LITEPANELS	66
LED LIGHTS	67

SOUND EQUIPMENT

TELEPROMPTERS	67
SOUND BLIMPS	68
KENYON GYRO STABILIZERS	68
SLIDERS	69
MICROPHONES & RECORDERS	70

**For long term rentals please inquire about
PACKAGE DISCOUNTS!**

TABLE OF CONTENTS

METERS

EXPOSURE METERS 71

TRIPODS & HEADS

TRIPODS & HEADS 73

VIDEO TRIPODS & HEADS 73

FLUID HEADS 74

GRIP EQUIPMENT

DOLLYS 74

LIGHT MOUNTING ACCESSORIES 75

STINGERS 75

FOG & WIND MACHINES 75

REFLECTORS, BACK DROPS & SCRIM JIMS 76

CHROMA-KEY 77

GRIP BOOMS & STANDS 78

HEAVY DUTY STANDS 80

HONDA PORTABLE GENERATORS 81

HONDA HEAVY DUTY GENERATORS 82

MAGLINER CARTS 82

INOVATIV CARTS 82

PRODUCTION

PRODUCTION SUPPLIES 83

RENTAL REQUIREMENTS

REQUIREMENTS FOR RENTING 85

INSURANCE REQUIREMENTS 87

Canon CANON DIGITAL CAMERAS



EOS 1Dx Mark II

\$250.00

- Effective Megapixels: 20.2
- Dual DIGIC 6+ Image Processors
- 3.2" 1.62m-Dot Touchscreen LCD Monitor
- DCI 4K Video at 60 fps, 8.8MP Still Grab

4K



EOS 1Dx

\$210.00

- Effective Megapixels: 18.1
- Full-Frame Sensor • Up to 12 frames per second
- EOS HD Video with manual exposure control and multiple frame rates
- ISO range of 100 - 51200 (up to 204800 in H2 mode)



EOS 1D C

\$300.00

- Effective Megapixels: 18.1
- Compact, Durable, Self-Contained 4K Video Recording
- 4K Motion JPEG YCbCr 4:2:2, 8-bit video recording
- 12 frames per second
- HDMI Output with Time Code

4K



EOS 5D Mark IV

\$150.00

- 30.4MP Full-Frame CMOS Sensor
- DIGIC 6+ Image Processor
- 3.2" 1.62m-Dot Touchscreen LCD Monitor
- Native ISO 32000, Expanded to ISO 102400
- DCI 4K Video at 30 fps; 8.8MP Still Grab

4K



EOS 5D Mark III

\$95.00

- 22.3MP Full-Frame CMOS Sensor
- 3.2" Clear View High Resolution LCD
- DIGIC 5+ Image Processor
- 61-Point High Density AF
- Full HD 1080/30p and 720/60p Formats

All digital DSLR cameras include; 1 camera body, 2 batteries, 1 charger, 1 video cable, 1 USB cable, software and manual.

PRICES SUBJECT TO CHANGE WITHOUT NOTICE.
ALL PRICES ARE PER DAY, UNLESS OTHERWISE INDICATED.

Canon

CANON DIGITAL CAMERAS

EOS 5D Mark II

\$85.00

- 21MP Full-Frame Sensor
- 1080p HD video
- 3.9 fps



EOS 5DS

\$130.00

- Dual DIGIC 6 Image Processors
- 3.2" 1.04m-Dot ClearView II LCD Monitor
- Full HD 1080p Video Recording at 30 fps
- Time Lapse movie function which takes still photos at set intervals and combines them into a full HD movie
- EOS Scene Detection System with the 150,000-pixel RGB+IR metering sensor provides precise exposure and color metering



EOS 5DS R

\$140.00

- 50.6MP Full-Frame CMOS Sensor
- Dual DIGIC 6 Image Processors
- Low-Pass Filter Effect Cancellation
- 3.2" 1.04m-Dot ClearView II LCD Monitor



EOS 6D

\$65.00

- 20.2MP Full-Frame CMOS Sensor
- DIGIC 5+ Image Processor
- EOS HD Video with manual exposure & multiple frame rates
- ISO setting 100-25600, Up to 4.5 fps
- New 11-point AF Continuous shooting
- Built-in Wi-Fi® transmitter

All digital DSLR cameras include; 1 camera body, 2 batteries, 1 charger, 1 video cable, 1 USB cable, software and manual.

PRICES SUBJECT TO CHANGE WITHOUT NOTICE.
ALL PRICES ARE PER DAY, UNLESS OTHERWISE INDICATED.

Canon

CANON DIGITAL CAMERAS



EOS 7D Mark II

\$55.00

- 20.2MP APS-C CMOS Sensor
- Dual DIGIC 6 Image Processors
- 3.0" 1.04m-Dot Clear View II LCD Monitor
- Full HD 1080p/60 Video & Movie Servo AF
- Dual Pixel CMOS AF with Live View
- Native ISO 16000, Extended to ISO 51200
- 10 fps Shooting at Full Resolution
- Built-In GPS Receiver & Digital Compass



EOS 7D

\$45.00

- Effective Megapixels: 18
- APS-C sensor (1.6x)
- 1080p HD video
- 8 frames per sec
- ISO 100-6400 (expandable to L:50 H:12800)

EOS 60D

\$40.00

EOS 70D

\$50.00



EOS 80D

\$75.00

- 24.2MP APS-C CMOS Sensor
- DIGIC 6 Image Processor
- Full HD 1080p Video Recording at 60 fps
- 45-Point All Cross-Type AF System
- Expanded ISO 25600, up to 7 fps shooting



Battery Grips

\$15.00

for EOS 5D Mark II and EOS 5D Mark III, Mark IV

Samy's Camera **PRO RENTAL STAFF** will be happy to **CUSTOMIZE** rental packages upon request.

For long term rentals please inquire about **PACKAGE DISCOUNTS!**

PRICES SUBJECT TO CHANGE WITHOUT NOTICE.
ALL PRICES ARE PER DAY, UNLESS OTHERWISE INDICATED.

Canon CANON LENSES

Wide Angle

- EF 14mm f/2.8 II USM\$40.00
- EF 15mm f/2.8 Fish Eye.....\$30.00
- EF 17mm f/4L UD TS-E.....\$55.00
- EF 20mm f/2.8 USM.....\$15.00
- EF 24mm f/1.4 L II USM\$40.00
- EF 24mm f/2.8\$12.00
- EF 24mm f/3.5L TS-E II.....\$50.00
- EF 28mm f/1.8 USM.....\$20.00
- EF 28mm f/2.8\$12.00
- EF 35mm f/1.4 L USM\$40.00
- EF 35mm f/1.4 II\$45.00
- EF 35mm f/2.0\$12.00
- EF 35mm f/2 IS USM\$40.00
- EF 40mm F2.8 STM.....\$15.00



Normal

- EF 45mm f/2.8 TS-E\$40.00
- EF 50mm f/1.2 L USM.....\$40.00
- EF 50mm f/1.4 USM.....\$16.00
- EF 50mm f/1.8 II.....\$10.00
- EF 50mm f/2.5 Macro\$16.00
- EFS 60mm f/2.8 Macro\$16.00
- MP-E 65mm f/2.8 1.5x Macro\$40.00

Telephoto

- EF 85mm f/1.2L II USM.....\$40.00
- EF 85mm f/1.8 USM.....\$15.00
- EF 90mm f/2.8 TS-E.....\$40.00
- EF 100mm f/2.0 USM\$20.00
- EF 100mm f/2.8 Macro\$20.00
- EF 100mm f/2.8L IS USM Macro\$25.00
- EF 135mm f/2.8 SF\$18.00
- EF 135mm f/2.0L USM.....\$30.00
- EF 180mm f/3.5 Macro L\$24.00
- EF 200mm f/1.8L USM.....\$75.00
- EF 200mm f/2.0 L IS USM\$100.00
- EF 200mm f/2.8 II USM.....\$25.00
- EF 300mm f/2.8L IS II USM\$100.00
- EF 300mm f/2.8L IS USM\$55.00
- EF 300mm f/4.0L IS USM\$22.00
- EF 400mm f/2.8L II USM\$200.00
- EF 400mm f/2.8L IS USM\$100.00
- EF 400mm f/5.6L USM\$22.00
- EF 500mm f/4.0L IS II USM\$150.00
- EF 500mm f/4.0L\$100.00
- EF 600mm f/4.0L USM\$100.00
- EF 600mm f/4.0L IS USM\$150.00
- EF 800mm f/5.6 IS USM.....\$275.00

Tilt-Shift

- 17mm f/4.0 L TS-E\$55.00
- 24mm f/3.5 II TS-E\$50.00
- 45mm f/2.8 TS-E.....\$40.00
- 90mm f/2.8 TS-E.....\$40.00



Specialty

- Lens Baby - Composer.....\$20.00

PRICES SUBJECT TO CHANGE WITHOUT NOTICE.
ALL PRICES ARE PER DAY, UNLESS OTHERWISE INDICATED.

Canon CANON LENSES & FLASHES

Zoom Lenses

- EF 8-15mm f/4L Fisheye\$45.00
- EF-S 10-22mm f/3.5-4.5\$28.00
- EF 11-24mm f/4L USM.....\$55.00
- EF 16-35mm f/2.8L USM.....\$35.00
- EF 16-35mm f/2.8 II USM.....\$40.00
- EF-S 17-55mm f/2.8L.....\$35.00
- EF-S 17-85MM f/4-5.6 IS.....\$30.00
- EF 17-40mm f/4L\$25.00
- EF 24-70mm f/2.8 II USM\$40.00
- EF 24-70mm f/4 IS\$30.00
- EF 24-105mm f/4 L USM.....\$35.00
- EF 28-105mm f/3.5-4.5 USM\$20.00
- EF 28-135mm f/3.5-5.6 IS\$20.00
- EF 28-200mm f/3.5-5.6\$30.00
- EF 28-300mm f/3.5-5.6 IS.....\$35.00
- EF 35-350mm f/3.5-5.6L.....\$35.00
- EF 70-200mm f/2.8L IS\$35.00
- EF 70-200mm f/2.8L IS II\$40.00
- EF 70-200mm f/4.0L IS\$25.00
- EF 70-210mm f/3.5-4.5\$18.00
- EF 70-300mm f/4-5.6 IS.....\$35.00
- EF 70-300mm f/4-5.6L.....\$35.00
- EF 75-300mm f/4.5-5.6 DO IS\$25.00
- EF 100-400mm f/4.5-5.6L IS\$35.00
- EF 100-400mm f/4.5-5.6L IS II\$45.00
- EF 200-400mm f/4L IS 1.4 EXT....\$225.00

Canon Flashes & EOS Accessories

- 600 EX RT II.....\$30.00
- 600 EX RT.....\$30.00
- 580EX II.....\$25.00
- Macro Ring-light MR-14EX.....\$20.00
- Power Drive Booster PB-E2.....\$15.00
- Off Shoe Camera Adapter\$10.00
- EF Extender 1.4X.....\$12.00
- EF Extender 2.0X II\$12.00
- Life-size Converter\$12.00
- Remote TC80N3\$15.00
- Gary Fong Lightsphere\$10.00



ROKINON ROKINON CINE DS LENSES (EF MOUNT)



- 14mm T3.1 DS.....\$30.00
- 24mm T1.8 DS.....\$30.00
- 35mm T1.5 DS.....\$30.00
- 50mm T1.5 DS.....\$30.00
- 85mm T1.5 DS.....\$30.00

PRICES SUBJECT TO CHANGE WITHOUT NOTICE.
ALL PRICES ARE PER DAY, UNLESS OTHERWISE INDICATED.



NIKON DIGITAL CAMERAS



Nikon D5

\$250.00

- 20.8MP FX-Format CMOS Sensor
- EXPEED 5 Image Processor
- 3.2" 2.36m-Dot Touchscreen LCD Monitor
- 4K UHD Video Recording at 30 fps
- Multi-CAM 20K 153-Point AF System
- Native ISO 102400, Extend to ISO 3280000
- 12 fps Shooting for 200 Shots with AE/AF

4K



Nikon D500

\$85.00

- 20.9MP DX-Format CMOS Sensor
- EXPEED 5 Image Processor
- 3.2" 2,539k-Dot Tilting Touchscreen LCD
- 4K UHD Video Recording at 30 fps
- ISO range of 100-51,200 expandable to Lo 1 and Hi 5
- Built-in SnapBridge (Wi-Fi® + Bluetooth)

4K



Nikon D810

\$115.00

- All-new FX-format full-frame image sensor design
- No optical low-pass filter
- Flawless detail retention from snow white to pitch black
- Noise-free images from ISO 64 to ISO 12,800



Nikon D800

\$85.00

- Effective Megapixels: 36.3
- FX-format CMOS sensor
- Full HD 1080p video at 30/25/24p with stereo sound
- ISO range of 100-6400, expandable to 25,600
- 4 fps burst rate

Battery Grips for D800

\$15.00



Nikon D800E

\$90.00

- Optimized for NEF Raw File Capture
- Modified OLP Filter for High Resolution
- 36.3MP CMOS FX Format Sensor
- EXPEED 3 Image-Processing Engine
- Eye-Level Pentaprism Viewfinder
- 1920 x 1080/30/25/24p HD Video Capture

All digital DSLR cameras include; 1 camera body, 2 batteries, 1 charger, 1 video cable, 1 USB cable, software and manual.

PRICES SUBJECT TO CHANGE WITHOUT NOTICE.
ALL PRICES ARE PER DAY, UNLESS OTHERWISE INDICATED.



NIKON DIGITAL CAMERAS



Nikon DF

\$80.00

- Effective Megapixels: 16.2
- FX-format DSLR with a unique mechanical operation system
- 5.5 FPS Continuous Shooting
- 100-12800 ISO, Expandable to 204800
- Wi-Fi with optional Wu-1a



Nikon D610

\$65.00

- EXPEED 3 Image Processor
- Full HD 1080p Video Recording at 30 fps
- Continuous Shooting up to 6 fps
- Expandable Sensitivity to ISO 25600
- External Mic and Headphone Inputs



Nikon D4s

\$200.00

- Extended standard ISO range (100-25,600)
with enhanced noise reduction, and improved tonal range
- Shoot 11 fps for approx. 200 shots at full resolution
- 16.2MP FX-format CMOS image sensor is paired with
Nikon's new image-processing engine, EXPEED 4
- Live View, RAW SIZE S setting for shooting 12-bit uncompressed



Nikon D750

\$85.00

- Effective Megapixels: 24.3
- Full-Frame
- 6.5 FPS Continuous Shooting
- 100 -12,800 ISO Expandable to 51,200
- Full HD 1080p at 60/50/30/25/24p
- Built-in Wi-Fi

All digital DSLR cameras include; 1 camera body, 2 batteries, 1 charger, 1 video cable, 1 USB cable, software and manual.

PRICES SUBJECT TO CHANGE WITHOUT NOTICE.
ALL PRICES ARE PER DAY, UNLESS OTHERWISE INDICATED.



NIKON DIGITAL CAMERAS



Nikon D600

\$60.00

- 5.5 fps continuous shooting
- Crystal clear images from
- ISO 100 to 6400
- 1080p HD videos with selectable frame rates of 30p, 25p or 24p and MPEG-4 AVC/H.264 compression
- Wi-Fi camera control and mobile



Nikon D7100

\$50.00

- Effective Megapixels: 16.2
- 1.5x Sensor
- 1080p Video
- 6 FPS Continuous Shooting
- ISO 200-3200 (expandable to L:100 H:6400)
- Full HD 1080p Movies



Nikon D7200

\$55.00

- 24.2MP DX-Format CMOS Sensor
- No Optical Low-Pass Filter
- 3.2" 1,229k-Dot LCD Monitor
- 6 FPS Continuous Shooting
- 100-25600 ISO Expandable to 102400 in B&W

Nikon D5300

\$40.00

- 24.2MP DX-Format CMOS Sensor

All digital DSLR cameras include; 1 camera body, 2 batteries, 1 charger, 1 video cable, 1 USB cable, software and manual.

PRICES SUBJECT TO CHANGE WITHOUT NOTICE.
ALL PRICES ARE PER DAY, UNLESS OTHERWISE INDICATED.



NIKON AUTOFOCUS LENSES

Wide Angle

- 10.5mm f/2.8G DX Fisheye \$40.00
- 14mm f/2.8D ED AF \$35.00
- 16mm f/2.8 AF-D Fisheye \$25.00
- 18mm f/2.8 AF-D \$20.00
- 20mm f/2.8 AF-D \$15.00
- 24mm f/1.4G ED AF-S N \$40.00
- 24mm f/2.8 AF-D \$12.00
- 24mm f/3.5 PC-E \$50.00
- 28mm Aspheric f/1.4 AF-D \$30.00
- 28mm f/2.8 AF-D \$15.00
- 35mm f/1.4G AF-S \$40.00
- 35mm f/2.0 AF-D \$15.00



Normal

- 50mm f/1.4 AF-S \$16.00
- 50mm f/1.8 AIS \$10.00
- 58mm f/1.4G AF-S \$40.00
- 60mm f/2.8 Micro AIS \$18.00

Telephoto

- 85mm f/1.4G AF-S N \$40.00
- 85mm f/1.4 AF-D \$25.00
- 85mm f/1.8 AF \$18.00
- 85mm f/1.8 G AF-S \$18.00
- 105mm f/2.8G ED-IF AF-S VR Micro \$25.00
- 105mm f/2.8 Micro \$20.00
- 105mm f/2.0 DC AF-D \$25.00
- 135mm f/2.0 DC AF \$18.00
- 180mm f/2.8 ED-IF AF-D \$18.00
- 200mm f/2.0 G ED-IF AF-S VR \$80.00
- 200mm f/4.0 D Micro-Nikkor \$22.00
- 300mm f/2.8 ED-IF AF-D \$45.00
- 300mm f/2.8 ED-IF AF-S \$55.00
- 300mm f/4.0 ED-IF AF-D \$28.00
- 300mm f/2.8G ED VR II \$115.00
- 400mm f/2.8 ED-IF D AF-1 \$100.00
- 600mm f/4.0 ED-IF D AF-S1 \$150.00
- 600mm f/4.0G AF-S VR \$175.00



PRICES SUBJECT TO CHANGE WITHOUT NOTICE.
ALL PRICES ARE PER DAY, UNLESS OTHERWISE INDICATED.



NIKON AUTOFOCUS LENSES



Zoom

- 16-35mm f/4G ED AF-S VR N\$30.00
- 14-24mm f/2.8 AF-S\$35.00
- 17-35mm f/2.8 AF-D/AF-S\$30.00
- 20-35mm f/2.8 AF-D\$25.00
- 24-70mm f/2.8 G\$35.00
- 24-70mm f/2.8E ED VR\$40.00
- 24-120mm f/3.5-5.6 D IF\$18.00
- 24-120mm f/4 AFS VR\$35.00
- 28-70mm f/3.5-4.5 AF-D\$18.00
- 28-70mm f/2.8 AF-D/AF-S\$30.00
- 28-85mm f/3.5-4.5 AF AIS\$18.00
- 28-105mm f/3.5-4.5 AF D\$18.00
- 28-300mm f/3.5-5.6G ED AF-S VR \$30.00
- 28-200mm f/3.5-5.6 D IF\$20.00
- 35-70mm f/2.8 AF-D AIS\$20.00
- 35-105mm f/3.5-4.5 IF AF-D\$18.00
- 35-135mm f/3.5-4.5 AF AIS\$18.00
- 70-200mm f/2.8 VR FL\$50.00
- 70-200mm f/2.8G ED AF-S VR II....\$40.00
- 70-200mm f/2.8 VR\$35.00
- 75-300mm f/3.5-4.5 AF AIS\$22.00
- 80-200mm f/2.8 ED AF-D\$25.00
- 80-200mm f/2.8 ED AF-D/AF-S\$30.00
- 80-400mm f/4.0 AFD VR\$40.00
- 200-400mm f/4G ED VR II\$100.00

DX Lenses

- 10.5mm f/2.8G DX Fisheye\$40.00
- 17-55mm f/2.8 AF-S DX\$30.00
- 18-200mm f/3.5-5.6 AF-S DX VR ...\$25.00
- 18-105mm f/3.5-5.6 AF-S DX VR\$20.00
- 12-24mm f/4.0 G/AF-S DX\$35.00



Macro Lenses

- 60mm f/2.8D AF-S G\$20.00
- 85mm f/2.8D PC-E Micro\$35.00
- 105mm f/2.8G ED-IF AF-S VR\$25.00
- 105mm f/2.8D AF\$18.00
- 200mm f/4.0\$45.00t

Perspective Control (PC) Lenses

- 24mm f/3.5 PC-E Nikkor\$50.00
- 45mm f/2.8D ED PC-E\$50.00
- 85mm f/2.8D PC-E Micro\$50.00



NIKON MANUAL LENSES



Wide Angle

- 8mm f/2.8 Fisheye, PL Mount CALL
- 8mm f/2.8 Fisheye \$75.00
- 15mm f/3.5 AIS.....\$40.00
- 16mm f/2.8 Fisheye.....\$30.00
- 18mm f/3.5 AIS.....\$40.00
- 20mm f/2.8.....\$25.00
- 24mm f/2.0 AIS.....\$25.00
- 28mm f/2.0 AIS.....\$25.00
- 28mm f/3.5 PC.....\$30.00
- 35mm f/1.4 AIS.....\$30.00
- 35mm f/2.8 PC.....\$30.00

Normal

- 50mm f/1.4.....\$25.00
- 50mm f/1.8.....\$20.00
- 58mm f/1.2 Noct. AIS\$30.00

Telephoto

- 85mm f/1.4 AIS.....\$30.00
- 85mm f/2.8 PC/TS.....\$35.00
- 105mm f/1.8 AIS\$30.00
- 105mm f/2.5 AIS\$24.00
- 200mm f/2.0 ED AIS\$45.00
- 300mm f/2.8 ED AIS\$45.00
- 400mm f/2.8 ED AIS.....\$75.00
- 400mm f/3.5 ED AIS.....\$50.00
- 500mm f/4.0 ED AIS\$70.00
- 500mm f/8.0 Mirror Reflex.....\$20.00
- 600mm f/5.6 ED AIS\$80.00
- 800mm f/5.6 ED AIS\$75.00

Nikon Teleconverters

- TC-14E for AF/AIS lenses only..... \$15.00
 - TC-20E for AF/AIS lenses only..... \$15.00
 - TC-14E II (1.4x).....\$15.00
 - TC-17E II (1.7x)\$15.00
 - TC-20E III (2.0x).....\$20.00
- (AF not possible with 500 / 600mm AF-S with the TC-20E)

Specialty Lens

- Lens Baby - Composer..... \$20.00



NIKON FLASHES & ACCESSORIES

Nikon Speedlites

- SB-800\$20.00
- SB-900\$25.00
- SB-910\$30.00
- SC-29.....\$7.00

Nikon Speedlite Modifier

- Gary Fong Lightsphere\$10.00

PRICES SUBJECT TO CHANGE WITHOUT NOTICE.
ALL PRICES ARE PER DAY, UNLESS OTHERWISE INDICATED.

ZEISS**ZEISS LENSES (35MM SLR MOUNT)****Canon Mount**

- 15mm f/2.8.....\$60.00
- 18mm f/3.5.....\$50.00
- 21mm f/2.8.....\$50.00
- 25mm f/2.0.....\$50.00
- 28mm f/2.0.....\$50.00
- 35mm f/2.0.....\$50.00
- 50mm f/1.4.....\$50.00
- 50mm Macro f/2.0\$50.00
- 55mm f/1.4 Otus.....\$60.00
- 85mm f/ 1.4.....\$50.00
- 85mm f/1.4 Otus.....\$60.00

Macro

- 50mm f/2.0.....\$50.00
- 100mm f/2.0\$50.00

Nikon Mount

- 8mm f/2.8 Fisheye PL Mount CALL
- 15mm f/2.8.....\$60.00
- 18mm f/3.5.....\$50.00
- 21mm f/2.8.....\$50.00
- 28mm f/2.0.....\$50.00
- 35mm f/2.0.....\$50.00
- 50mm f/1.4.....\$50.00
- 85mm f/1.4.....\$50.00

Milvus Lenses

- 21mm f/2.8.....\$50.00
- 35mm f/2.0.....\$50.00
- 50mm f/1.4.....\$50.00
- 50mm f/2.0.....\$50.00
- 85mm f/1.4.....\$50.00

**Zeiss Compact Prime Lenses**

- 15.5-45mm T2.6 LWZ.2
- 15mm T2.9 CP.2
- 18mm f/3.6 C-prime
- 21mm f/2.9 C-prime
- 25mm f/2.9 C-prime
- 35mm f/2.1 C-prime

CALL FOR PRICE*

- 50mm f/1.5 C-prime
- 50mm f/2.1 C-prime
- 85mm f/1.5 C-prime
- 85mm f/2.1 C-prime
- 100mm f/2.1 C-prime

*4 day week rental

PRICES SUBJECT TO CHANGE WITHOUT NOTICE.
ALL PRICES ARE PER DAY, UNLESS OTHERWISE INDICATED.

SIGMA SIGMA LENSES



- 8mm f/3.5 Fisheye \$40.00
- 10-20mm f/3.5 DC..... \$25.00
- 18-35mm f/1.8 DC..... \$35.00
- 12-24mm f/4.5-5.6 \$30.00
- 24mm f/1.4 ART OG HSM (EF Mount) \$40.00
- 35mm f/1.4 ART DG HSM (EF Mount) \$40.00
- 50mm f/1.4 ART DG HSM (EF Mount) \$40.00
- 24-70mm f/2.8..... \$15.00
- 50-100mm f/1.8 DC \$40.00
- 18-135mm f/1.8 DG HSM (EF Mount) \$35.00
- 24-105mm f/4.0 DG OS (EF Mount)..... \$35.00
- 120-300mm f/2.8 APO OS (EF Mount) \$75.00
- 150-500mm f/5 \$25.00
- 150-600mm f/5-6.3 Contemporary..... \$40.00
- 150-600mm f/5-6.3 Sport (EF & Nikon Mounts) \$60.00

SIGMA CINE LENSES

This cine lineup covers everything from wide angle to telephoto. The High Speed Zoom Line is compatible with Super35, the image size standard used by typical digital cinema cameras, while the FF High Speed Prime Line and FF Zoom Line are compatible with a full-frame image circle. These options enable cinematographers to shoot with a wide range of expressive purposes.



- 18-35mm T2 CALL
- 24-35mm T2.2 CALL
- 50-100mm T2 CALL
- 20mm T1.5 CALL
- 24mm T1.5 CALL
- 35mm T1.5 CALL
- 50mm T1.5 CALL
- 85mm T1.5 CALL

Tokina TOKINA LENSES

- 11-20mm f/2.8 DX..... \$25.00
- 11-20mm f/2.8 \$25.00
- 10-17mm f/3.5-4.5 \$30.00
- 11-16mm f/2.8..... \$30.00
- 16-28mm f/2.8 \$35.00



PRICES SUBJECT TO CHANGE WITHOUT NOTICE.
ALL PRICES ARE PER DAY, UNLESS OTHERWISE INDICATED.

ADAPTERS

metabones



Metabones attaches a Canon EF or Nikon G lens to a Sony NEX camera. It is referred to as a "Smart Adapter" because it retains electronic communication between the camera and lens and therefore provides automatic aperture control, EXIF data, image stabilization and autofocus. The adapter is powered by the camera body, so no external power source is required.

Metabones Adapters

- NEX - EF Mount..... \$30.00
- E - EF Speedbooster \$50.00
- E - EF Mark IV Mount \$30.00
- Micro 4/3 - EF Mount..... \$30.00
- Micro 4/3 - EF Speedbooster..... \$50.00
- E - Nikon G Mount..... \$30.00

N

NOVOFLEX



NOVOFLEX offers many adapters to connect lenses and cameras with different bayonets. With all adapters and/or adapter combinations, infinity adjustment of the lens is possible. None of the adapters will transfer functions from the camera body to the lens. For all modern cameras we recommend the use of the stop-down metering / aperture priority. All adapters are manufactured highprecisely and intentionally without any optical elements.



LEICA CAMERAS

M9 (BODY ONLY)

\$175.00



Compact with intuitive handling and simple menu navigation. The combination of an extremely high-resolution image sensor, the superior performance of M lenses, and sophisticated processing of the captured digital information ensures the best imaging results in all photographic situations. The 18MP CCD image sensor, specifically designed and developed for this camera, enables the capture of the full 35-mm film format without any compromises.

M7 Rangefinder (BODY ONLY)

\$50.00



Stepless auto shutter speed control with metered value storage. Cloth focal plane shutter controls exposure times electronically. Unique LED integrated in the viewfinder. An on/off switch is positioned ergonomically right next to the release button. Flash at sync speeds up to 1/1000 sec in conjunction with special Metz flash units. Use flash creatively: Flash unit can also be triggered by the second curtain shutter. Prevent faulty exposures: DX coding & override feature in the auto-exposure mode.

LEICA LENSES

M Series Lenses

LEICA M lenses are hand-assembled with meticulous care and with their wide apertures, ambient light can be used to its best advantage. Excellent sharpness, extraordinarily high contrast performance and strictly neutral color rendition are their outstanding characteristics.



M7 / M6 / M6TTL

- Elmarit-M 21mm f/2.8 ASPH CALL
- Elmarit-M 24mm f/2.8 ASPH CALL
- Elmarit-M 28mm f/2.8 CALL
- Summilux-M 35mm f/1.4 ASPH CALL
- Summicron 35mm f/2 ASPH CALL
- Summilux-M 50mm f/1.4 CALL
- Summicron-M 50mm f/2 CALL
- Elmar-M 50mm f/2.8 CALL
- Apo-Summicron-M 90mm f/2 ASPH CALL
- Elmarit-M 90mm f/2.8 CALL

PRICES SUBJECT TO CHANGE WITHOUT NOTICE.
ALL PRICES ARE PER DAY, UNLESS OTHERWISE INDICATED.

SONY SONY DIGITAL CAMERAS



SONY A9 Body

\$175.00

- 24.2MP Full-Frame Stacked CMOS Sensor
- BIONZ X Image Processor & Front-End LSI
- 693-Point AF System & 20 fps Shooting
- Blackout-Free Quad-VGA 3.7m-Dot OLED EVF

4K



SONY A7S II Body

\$125.00

- 12.2MP Full-Frame Exmor CMOS Sensor
- 4K movie recording featuring full pixel
- 5-axis optical image stabilization • Extended 409600 ISO

4K



SONY A7R II Body

\$125.00

- 42MP Full-Frame Exmor R BSI CMOS Sensor
- BIONZ X Image Processor • 102400 ISO
- Internal UHD 4K Video & S-Log2 Gamma
- 5-Axis SteadyShot INSIDE Stabilization

4K

SONY A7S Body

\$80.00

SONY A7R Body

\$80.00

SONY A7II Body

\$65.00

SONY LENSES



- | | |
|-----------------------------------|----------------------------------|
| • 16mm f/2.8..... \$30.00 | • 18-200mm f/3.5 \$40.00 |
| • 28mm f/2 FE \$25.00 | • 24-70mm f/2.8 G..... \$50.00 |
| • 35mm f/1.4 FE ZEISS ... \$35.00 | • 24-70mm f/4.0 FE \$25.00 |
| • 35mm f/2.8 FE \$30.00 | • 24-240mm f/3.5-6.3.... \$20.00 |
| • 55mm f/1.8..... \$30.00 | • 28-70mm f/3.5-5.6..... \$15.00 |
| • 90mm f/2.8 FE Macro . \$30.00 | • 70-200mm f/2.8 G \$45.00 |
| • 10-18mm f/4 E DX..... \$40.00 | • 70-200mm f/4.0 FE..... \$35.00 |
| • 16-35mm f/4 FE..... \$25.00 | • 28-135mm f/4 |
| • 16-70mmE f/4.0..... \$35.00 | PZ OSS FE..... \$45.00 |
| • 18-105mm f/4 G E PZ... \$25.00 | • 24-240mm f/3.5-6.3.... \$20.00 |

ZEISS LENSES

- | | |
|----------------------------------|----------------------------------|
| • 25mm F2.0 Batis FE.... \$30.00 | • Loxia 35mm F2.0 FE ... \$30.00 |
| • 85mm F1.8 Batis FE ... \$30.00 | • Loxia 50mm F2.0 FE... \$30.00 |



PRICES SUBJECT TO CHANGE WITHOUT NOTICE.
ALL PRICES ARE PER DAY, UNLESS OTHERWISE INDICATED.

PHASE ONE PHASE ONE DIGITAL CAMERA BACKS

Phase One IQ3 100MP

CALL

100MP full frame CMOS sensor delivers unparalleled Phase One image quality built upon 16bit color depth, 15 stops dynamic range, ISO sensitivity up to 12800, and exposure times ranging from 1/4000th of a second to 60 minute exposures while still retaining the 1/1600th flash sync speed.

Phase One IQ350

CALL

- 50MP full frame CMOS sensor
- 6 bit color depth
- ISO sensitivity up to 12800
- 15 stops dynamic range
- Up to 60 minutes exposure

Phase One IQ360

CALL

- 60MP full frame CCD sensor
- 6 bit color depth
- ISO sensitivity up to 12800
- 15 stops dynamic range
- Up to 60 minutes exposure

Phase One IQ380

CALL

- 80MP full frame CCD sensor
- 6 bit color depth
- ISO sensitivity up to 12800
- 15 stops dynamic range
- Up to 60 minutes exposure



Phase One IQ280

CALL

Phase One IQ260

CALL

Phase One IQ250

CALL



Phase One XF Medium Format Body

CALL

- New, patent-pending Autofocus system HAP-1
- Flexible OneTouch user interface
- IQ3 digital back compatibility
- New 90° Prism viewfinder

PRICES SUBJECT TO CHANGE WITHOUT NOTICE.
ALL PRICES ARE PER DAY, UNLESS OTHERWISE INDICATED.

PHASEONE PHASE ONE LENSES



WITH SCHNEIDER OPTICS

- 28mm f/4.5\$75.00
- 28mm f/4.5 LS\$100.00
- 35mm f/3.5\$75.00
- 35mm f/3.5 LS\$125.00
- 45mm f/2.8\$75.00
- 55mm f/2.8 LS\$75.00
- 80mm f/2.8 LS AF\$50.00
- 110mm f/2.8 LS AF\$75.00
- 120mm f/4 Macro\$75.00
- 120mm f/4.0 LS\$125.00
- 120mm f/5.6 MF TS\$125.00
- 75-150mm f/4.5 AFD\$75.00
- 150mm f/3.5 LS\$75.00
- 240mm f/4.5\$100.00

Blue Ring Lenses

- 35mm LS BR f/3.5\$135.00
- 55mm LS BR f/2.8\$125.00
- 80mm LS BR f/2.8\$100.00
- 110mm LS BR f/2.8\$125.00
- 120mm LS BR f/4\$125.00
- 150mm LS BR f/3.5\$135.00
- 240mm LS BR f/4.5\$135.00



PENTAX PENTAX MEDIUM FORMAT



645Z Medium Format DSLR

\$125.00

- 51.4MP CMOS Sensor - 43.8 x 32.8 mm
- Prime III Image Processor
- Anti-Alias Filter-Less Design
- 3.2" 1037K Dot Tilttable Air-Gapless LCD
- Full HD 1080 60i/30p/24p Video Capture
- ISO Sensitivity Range of 100 - 204,800
- SAFOX II TTL 27 Point Autofocus System
- 3 fps Continuous Shooting

- 90mm f/2.8ED AW Macro\$75.00
- 55mm f/2.8 AL IF\$40.00
- 120mm f/4.0 Macro\$40.00
- 28-45mm f/4.5\$75.00
- 45-85mm f/4.5\$55.00

PRICES SUBJECT TO CHANGE WITHOUT NOTICE.
ALL PRICES ARE PER DAY, UNLESS OTHERWISE INDICATED.

HASSELBLAD HASSELBLAD DIGITAL CAMERA BACKS
CREATE TO INSPIRE

Hasselblad H5X
CALL

The H5X incorporates H5 technology and versatility including optimized True Focus AF and improved grip design. It is compatible with H-system lenses, CF/CFH backs, numerous third party digital backs and four distinct viewfinders.


Hasselblad H6D-100c
CALL

100MP 53.4 x 40mm CMOS sensor to produce high-resolution stills as well as UHD 4K video. CMOS design sensor affords a wide sensitivity range of ISO 64-12800, 16-bit color depth and a dynamic range of up to 15 stops to maintain notable detail and quality in the most difficult of lighting conditions. Shoot both UHD 4K and Full HD video at 30 fps in the Hasselblad RAW format.


Hasselblad H5D-60
CALL

- 60 MP 40.2 x 53.7mm CCD Sensor
- 3.0" 24-Bit Color LCD w/ 460,320 Pixels
- True Focus II and Focus Confirm
- 16-Bit Color Definition


Hasselblad H5D-40
CALL

- 40 MP 32.9 x 43.8mm CCD Sensor
- 3.0" 24-Bit Color LCD with 460,320 Pixels
- True Focus II and Focus Confirm
- 16-Bit Color Definition


Hasselblad H5D-50c
CALL

- 50 MP 43.8 x 32.9mm CMOS Sensor
- 3.0" 24-Bit Color LCD with 460,320 Pixels
- True Focus and Absolute Position Lock
- 16-Bit Color Definition
- Hasselblad RAW 3FR File Format


Hasselblad X1D-50c

50MP 43.8 x 32.9mm CMOS sensor in a mirrorless camera body. Hasselblad Natural Color Solution to create phenomenal raw images with smooth tonal gradations thanks to 16-bit color depth and 14 stops of dynamic range. Sensitivity range of ISO 100-25600.

- Camera body \$325.00
- 45mm lens \$100.00
- 90mm lens \$125.00

PRICES SUBJECT TO CHANGE WITHOUT NOTICE.
 ALL PRICES ARE PER DAY, UNLESS OTHERWISE INDICATED.

HASSELBLAD HASSELBLAD H SERIES LENSES

CREATE TO INSPIRE

Hasselblad lenses use high performance central lens shutters, making them stable, quiet, and particularly useful for flash work at fast shutter speeds or many other tricky lighting situations. Whether it is a fashion shoot in the studio or an action shoot using portable fill-flash on location, Hasselblad central shutter lenses deliver correct captures at flash sync speeds up to 1/500 sec. That is four times faster than comparable focal plane shutters. And thanks to the T* anti-reflection coating and internal stray light reduction treatments, these lenses produce unbeatable image contrast and color saturation.



• HCD 24mm f/4.8	\$125.00
• HC 28mm f/4.....	\$100.00
• HC 35mm f/3.5	\$50.00
• HC 50mm f/3.5	\$50.00
• HC 50mm II f/3.5	\$100.00
• HC 35-90mm f/4.0-5.6.....	\$100.00
• HC 50-110mm f/3.5-4.5 Zoom	\$75.00
• HC 80mm f/2.8	\$40.00
• HC 120mm f/4	\$75.00
• HC 120mm II f/4.0	\$100.00
• HC 150mm f/3.2.....	\$50.00
• HC 210mm f/4	\$50.00
• HC 300mm f/4	\$100.00

Samy's Camera **PRO RENTAL STAFF** will be happy to **CUSTOMIZE** rental packages upon request.

For long term rentals please inquire about **PACKAGE DISCOUNTS!**

PRICES SUBJECT TO CHANGE WITHOUT NOTICE.
ALL PRICES ARE PER DAY, UNLESS OTHERWISE INDICATED.

HASSELBLAD **HASSELBLAD CAMERAS**



Hasselblad 503CW

New mechanical body accepts CW winder. Has TTL flash control.
Uses all magazines, finders and lenses.

- Body with Winder \$40.00
- Body only..... \$30.00
- CW Winder only with IR remote \$10.00
- IR Remote (for use with CW Winder) \$5.00



Hasselblad 555 ELD

Motorized body. Auto film advance.
Uses all mags, finders & lenses.

- Body only..... \$45.00

ELX Accessories

- Remote Cords (10, 15, or 20 Feet)..... \$5.00



903SWC Superwide Hasselblad

Features 38mm f/3.5 Biogon lens. Optically corrected viewfinder.

- Body with 12 exp. mag., view-finder,
Biogon 38 mm f/3.5 lens..... \$35.00
- Ground Glass Back..... \$7.00
- Magnifying Hood for Ground Glass \$5.00

HASSELBLAD HASSELBLAD V SERIES LENSES

CREATE TO INSPIRE



Wide Angle Lenses

- 30mm f/3.5 Distagon Fisheye (180° field)..... \$50.00
- 40mm f/4.0 Distagon FLE Super Wide Angle..... \$40.00
- 50mm f/4.0 Distagon FLE Wide Angle..... \$30.00
- 60mm f/3.5 Distagon Wide Angle \$30.00



Normal Lenses

- 80mm f/2.8 Planar Normal..... \$25.00
- 100mm f/3.5 Planar Normal \$30.00

Telephoto Lenses

- 120mm f/4.0 Makro-Planar..... \$30.00
- 150mm f/4.0 Sonnar \$30.00
- 180mm f/4.0 Sonnar..... \$40.00
- 250mm f/5.6 Sonnar..... \$40.00
- 300mm f/5.6 Sonnar..... \$50.00
- 350mm f/5.6 Tele-tessar..... \$60.00
- 500mm f/8 Tele-tessar..... \$70.00

Our inventory is updated regularly - if you don't see it here, give us a call!



PRICES SUBJECT TO CHANGE WITHOUT NOTICE.
ALL PRICES ARE PER DAY, UNLESS OTHERWISE INDICATED.

HASSELBLAD **HASSELBLAD ACCESSORIES**

CREATE TO INSPIRE



Special Application Lenses

- 250 Super Achromat..... \$60.00
- 350 CFE Super Achromat..... \$60.00
- 1.4 XE APO Teleconverter..... \$30.00
- 140-280mm f/5.6 Variogon Zoom \$60.00
- Mutar 2X Teleconverter \$30.00
- Mutar 1.4 Teleconverter with shift control \$30.00



Hasselblad Film Magazines

- A12 Mag, 12 exp (120 film)..... \$10.00
- A24 Mag, 24 exp (220 film)..... \$10.00
- Mag 100 Polaroid back \$10.00



Hasselblad Viewfinders

- PM5 Prism viewfinder (45°)..... \$15.00
- PME51 Prism viewfinder (meter prism)..... \$20.00
- PM-90 Prism viewfinder..... \$15.00
- PME-90 Prism viewfinder..... \$25.00
- Magnifying hood (smokestack) \$10.00
- Standard focusing hood..... \$10.00

Samy's Camera **PRO RENTAL STAFF** will be happy to **CUSTOMIZE** rental packages upon request.

For long term rentals please inquire about **PACKAGE DISCOUNTS!**

Mamiya MAMIYA CAMERAS



Mamiya 7 II

A 6x7cm AE rangefinder camera with interchangeable leaf shutter lenses.

- Body \$35.00
- 43mm f/4.5 lens with optical viewfinder \$40.00
- 50mm f/4.5 with optical viewfinder \$30.00
- 65mm f/4.0 lens \$30.00
- F80mm f/4.0 lens..... \$30.00
- 150mm f/4.5 lens \$30.00
- 210mm f/8 lens \$30.00



RZ67 Pro-II

A 6x7cm, all-electronically controlled, medium format, single lens reflex camera with interchangeable revolving backs that accepts a Polaroid film holder. Also features motorized film advance and automatic exposure capabilities.

- Body, waist level finder, back, and 90mm f/3.5 lens or 110 mm f/2.8..... \$50.00
- RZ Pro II Body \$35.00
- RZ Pro II D Body..... \$40.00

Accessories

- 120 Back \$12.00
- 220 Back \$12.00
- Polaroid back..... \$12.00
- Mask set \$5.00
- AE Prism Finder \$20.00
- L-Grip..... \$12.00
- Pro Shade \$12.00
- Extra 77 mounting ring..... \$3.00
- Winder \$15.00
- Dual Cable release \$5.00

PRICES SUBJECT TO CHANGE WITHOUT NOTICE.
ALL PRICES ARE PER DAY, UNLESS OTHERWISE INDICATED.

Mamiya MAMIYA RZ LENSES



Wide Angle

- 37mm f/4.5Z Fisheye \$40.00
- 50mm f/4.5Z or ULD \$30.00
- 65mm f/4.0 L-A..... \$30.00
- 75mm f/3.5 L or Short Barrel..... \$30.00
- 75mm f/4.5Z PC \$35.00



Normal

- 90mm f/3.5 Z Normal..... \$25.00
- 110mm f/2.8Z Normal \$25.00
- 127mm f/3.8Z Normal..... \$25.00



Telephoto

- 140mm f/4.5Z Macro-Portrait \$25.00
- 150mm f/3.5Z Portrait..... \$25.00
- RZ/ZORK 150mm f/PC..... \$25.00
- 180mm f/4.5Z Telephoto \$25.00
- 180mm f/4.5 Soft Focus \$25.00
- 250mm f/4.5Z Telephoto \$25.00
- 360mm f/6.0 Super Telephoto \$35.00
- 500mm f/8.0Z Super Telephoto \$45.00



ApoChromatic Telephoto

- 210mm f/4.5Z APO \$45.00
- 250mm f/4.5Z APO \$55.00
- 350mm f/5.6Z AP..... \$60.00
- 500mm f/5.6Z APO \$75.00

Zoom

- 100-200mm f/5.2Z Zoom \$50.00

PRICES SUBJECT TO CHANGE WITHOUT NOTICE.
ALL PRICES ARE PER DAY, UNLESS OTHERWISE INDICATED.

ALPA[®]
OF SWITZERLAND

ALPA CAMERAS



ALPA 12 XY

\$100.00

The new ALPA 12 XY is an element of a complete system and not just an isolated new model. This means that all ALPA 12 camera bodies can use absolutely the same lenses, backs, back adapters, groundglasses, etc. It is a system that contains also lighter and smaller cameras, e.g. the ALPA, TC or the WA and SWA. You have to look at the complete system to fully understand each model's role. The ALPA 12 system: no compromise, exactly the right model for a specific use.



ALPA 12 TC

The ALPA 12 TC is the newest part of the ALPA 12 system. It is even smaller than the already compact ALPA 12 WA/SWA. This camera is fully compatible with all the elements of the ALPA 12 system: lenses, backs, viewfinders, accessories etc. It is the smallest up to 6x9 film camera and the smallest camera with exchangeable optics for today's high end digital backs.

- Body only.....\$75.00
- 24mm f/5.6 XL Apo Digitar.....\$75.00
- 35mm f/5.6 XL Apo Digitar.....\$75.00
- 47mm f/5.6 XL Apo Digitar\$75.00
- Center filter\$20.00
- Grip with no sleep cable\$20.00
- Phase One plate\$20.00

Samy's Camera **PRO RENTAL STAFF** will be happy to **CUSTOMIZE** rental packages upon request.

For long term rentals please inquire about **PACKAGE DISCOUNTS!**

PRICES SUBJECT TO CHANGE WITHOUT NOTICE.
ALL PRICES ARE PER DAY, UNLESS OTHERWISE INDICATED.



Value Added
Reseller
Professional Photography

APPLE MACINTOSH COMPUTERS



Apple Mac Pro

CALL

- 2.7 GHz 12-Core
- 1TB Flash Storage
- Dual AMD Firepro D700 CPU
- 32GB RAM



Apple Macbook Pro 15"

CALL

Retina Display



Versa Lithium Battery

\$25.00

- 190 watt-hour advanced lithium-polymer battery pack with modified Magsafe power cable to power Apple MacBook Pro 15" & 17"
- Rechargeable, super high-capacity, advanced battery technology
- Up to 4X longer battery life than your internal battery



APC Back-UPS Pro 1500 (120V)

\$35.00

- Provides power to your important computer components in the event of an electrical outage
- An LCD status display provides information including remaining battery life, load capacity, and event notices
- Output: 865W/1500VA; Input: 120V; 5x Battery Backup, 5x Surge Protection



Hyperjuice MBP2 Battery

\$25.00

- 2 high power 10W (5V, 2.1A max) USB ports
- Charge any 2 USB devices at the same time
- 100-Watt-hour lithium ion battery
- Use your MacBook for up to 18 hours

Hyperjuice Magic Box

\$10.00

PRICES SUBJECT TO CHANGE WITHOUT NOTICE.
ALL PRICES ARE PER DAY, UNLESS OTHERWISE INDICATED.



Value Added
Reseller
Professional Photography

APPLE MACINTOSH DISPLAYS



30" Cinema HD Display

\$150.00

- 1920 x 1200 resolution
- Ideal for Color-Critical Work



Apple 27" Thunderbolt Display

\$150.00

- incredible 2560 x 1440 resolution
- 6 ports on the monitor include the Thunderbolt port, 3 powered USB 2.0 ports, a FireWire 800 port, a Gigabit Ethernet port, and a Kensington security slot



EIZO EIZO DISPLAYS



ColorEdge CG247X

\$225.00

This 24.1-inch monitor is ideal for post production editing and video creation with precise color management and a range of features included to meet the needs of the media and entertainment industry.



ColorEdge CG276

\$225.00

27" Self-Calibrating color-critical monitor with 10-Bit simultaneous display, IPS technology, Digital Uniformity Equalizer, 3D look up table and built in calibrator.



ColorEdge CG277

\$225.00

With 99% Adobe RGB color space coverage, 10-bit simultaneous display, hardware calibration, this self-calibrating monitor is built to deliver optimal performance to professionals in printing, photography, and post production.



ColorEdge CG246

\$225.00

Delivers outstanding color and performance for professionals who work with still or moving pictures. It has a wide color gamut, built-in calibration sensor, several presets for broadcast standards, and is backed by an industry leading 5-year warranty.

Matthews Monitor Mount (baby adapter) **\$15.00**

PRICES SUBJECT TO CHANGE WITHOUT NOTICE.
ALL PRICES ARE PER DAY, UNLESS OTHERWISE INDICATED.

SURF & SPLASH HOUSINGS

AquaTech
Imaging Solutions



Aquatech Elite Surf Housings

- Sony A7 II.....\$150.00
- Canon 5D Mark III.....\$150.00
- Canon 1DC / 1Dx.....\$150.00
- Nikon D810.....\$150.00
- P110 Port.....\$25.00
- P120 Port.....\$25.00
- P145 Port.....\$45.00
- P160 Port.....\$45.00
- P215 Port.....\$45.00
- PD65 Port.....\$40.00
- PD75 Port.....\$45.00
- PD85 Port.....\$45.00
- PD135 Port.....\$45.00
- Canon Strike 600EX Housing.....\$50.00

Various gear for zoom lenses available (call for information)

**LIGHT.
MOTION**



SOLA CONTINUOUS LED LIGHTING



SOLA Dive 1200 S/F

\$35.00

CREE LED array outputs 300-1200 lumens in a 60° flood beam, and 125-500 lumens in a tight 12° spot. Power is provided by a rechargeable lithium-ion battery pack, which gives the light a run time of 70-280 min depending on the brightness level.



SOLA Video 2500 S/F

\$80.00

Extraordinarily smooth 60 degree wide beam pattern and penetrating 12 degree spot. 2500 lumen flood and 1200 lumen spot certified to the FL-1 Standard

Underwater Rental not available at all locations.

PRICES SUBJECT TO CHANGE WITHOUT NOTICE.
ALL PRICES ARE PER DAY, UNLESS OTHERWISE INDICATED.



CANON CINEMA EOS

Canon EOS C500

CALL

The Cinema EOS C500 4K Digital Cinema Camera capitalizes on the groundbreaking ergonomic design of the EOS C300 camera, and offers a Super 35mm, 8.85-megapixel CMOS image sensor, DIGIC DV III Image Processor and an expansive range of recording and output options specifically for 4K and 2K image acquisition. Offers two forms of 4K origination - productions can dynamically select DCI (SMPTE 2048-1:2011 standard) or the alternative television-centric Quad-HD (SMPTE 2036-1:2009 and ITU-R BT.1769 standards) source image formats.



Canon EOS C300 Mark II

CALL

II Camcorder Body with Dual Pixel CMOS AF features a Super 35mm CMOS. This provides faster and more accurate autofocus to assist users when operating with small crews. Expanded dynamic range of 15 stops, 4K/2K/HD internal and external recording (including 4K RAW output), improved Dual Pixel CMOS Autofocus, and dual CFast card slots.



Canon EOS C300

CALL

- Super 35mm sized CMOS sensor and broadcast quality 50 Mb/s 4:2:2 MPEG-2 codec

Canon EOS C100 Mark II

CALL

Featuring Canon's innovative Dual Pixel CMOS autofocus technology, the EOS C100 Mark II camera has been designed to improve the shooting experience with increased accuracy and control. Advanced image processing provides enhanced color resolution and virtually eliminates unwanted artifacts. Improved ergonomics and a larger, tiltable electronic viewfinder gives the EOS C100 Mark II a more comfortable handling experience. The EOS C100 Mark II's ability to record a variety of frame rates and codecs, including 1080/60p and MP4 files, offers vast potential to independent production companies, documentary filmmakers, and event videographers.



Canon EOS C100

CALL

- Optimized for run-and-gun and one-man-band style shooting
- 15% smaller than the C300



Canon Cinema EOS Lenses

CALL

- CN-E14mm T3.1 L F
- CN-E24mm T1.5 L F
- CN-E35mm T1.5 L F
- CN-E50mm T1.3 L F
- CN-E85mm T1.3 L F
- CN-E135mm T2.2 L F
- CN-E30-105mm T2.8 L SP
- CN-E30-300mm T2.95 - 3.7

PRICES SUBJECT TO CHANGE WITHOUT NOTICE.
ALL PRICES ARE PER DAY, UNLESS OTHERWISE INDICATED.

ZACUTO ZACUTO Z-FINDER



Z-Finder Pro 3x

\$25.00

Allows DSLR cameras to have the correct form factor for video. It offers 3x focusable magnification, a 40mm diameter Zacuto optical designed lens, an anti-fog coating protective cover, an eyecup preventing extraneous light leakage, a diopter and a field of view perfectly matched to 3" LCD screens.



Z-Finder EVF Pro

\$75.00

- TFT LCD Display / Resolution - 800 x 480
- Two HDMI Ports
- EVF Flip Model / Optical Viewfinder
- Anti-Fog Shield / Diopter Ring

Panasonic PANASONIC MIRRORLESS CAMERAS



DMC-GH4 Body

\$65.00

A true hybrid camera designed for both professional photo and video use. 16.05MP Digital Live MOS sensor and a 4-CPU Venus Engine, capable of capturing high-resolution JPEG and RAW stills, as well as UHD 4K 3840x2160 30p/24p and cinematic DCI 4K 4096x2160 video at 24p. Weather-sealed magnesium alloy body.

4K



DMW-YAGH Interface Unit for GH4

\$50.00

Designed to give the Lumix DMC-GH4 camera the video, audio, and power connectivity required for professional video workflows.



DMC-GH5 Body

\$95.00

Lighter, more compact camera body that includes cutting-edge 4K 60p (4:2:0 8-bit) and 30p (4:2:2 10-bit) in-camera cinematic video, 5GHz Wi-Fi + Bluetooth for fast connection and image transfer, lightning fast DFD focusing

4K

MICRO 4/3 LENSES



Panasonic

- 8mm f/3.5 \$25.00
- 20mm f/1.7 \$30.00
- 7-14mm f/4 \$30.00
- 14-42mm f/3.5-5.6 \$25.00
- 14-140mm f/3.5-5.6 \$40.00

Sigma

- 19mm f/2.8 DN \$25.00
- 30mm f/2.8 DN \$25.00
- 60mm f/2.8 DN \$25.00

PRICES SUBJECT TO CHANGE WITHOUT NOTICE.
ALL PRICES ARE PER DAY, UNLESS OTHERWISE INDICATED.

Canon

CANON CAMCORDERS



Canon XF305

CALL

Features 50Mbps MPEG-2 4:2:2 recording to Compact Flash (CF) cards. Ideally suited to match the requirements of electronic newsgathering (ENG) crews, independent filmmakers, documentary producers, event videographers and military agencies. Utilizes file-based MPEG-2 compression with an MXF File Wrapper.



Canon XF200

\$150.00

Features a 1/2.84" CMOS sensor that captures 1920 x 1080 video at various frame rates up to 59.94p, including a 24p mode for a more cinematic feel. Integrated Canon 20x HD Optical zoom lens 35mm equivalent zoom range of 26.8 to 576mm and features an 8-bladed iris to render highlights in a more natural manner.



Canon XF105

\$150.00

An amazingly compact, fully featured pro video camera that imports nearly all the features and functionality of the 3-chip XF305 into a smaller, single sensor form factor. Canon's robust MPEG-2 4:2:2 codec the XF105 records full HD 1920 x 1080 video to affordable Compact Flash cards.



Canon XC15

\$150.00

XC15 4K UHD Camcorder is ideal for handheld editorial and news shooting or on-set TV and film shoots. Its different Look Settings can be used to make sure it pairs well with Canon Cinema EOS cameras as well as XF and XA series camcorders. Its compact design, advanced 12 Megapixel CMOS image sensor, wide-angle 10x zoom lens with Image Stabilizer and advanced autofocus delivers outstanding sharpness and color.

4K



Canon XA10

\$100.00

Designed for situations where mobility is critical while shooting. This feature-rich, professional model records Full HD 1080p using an AVCHD codec. The ultimate professional camcorder for run-and-gun shooting, the compact XA10 includes a detachable handle for low-angle shooting and portability. With the handle attached the XA10's functionality is further enhanced with the addition of XLR inputs and an external microphone holder.

PRICES SUBJECT TO CHANGE WITHOUT NOTICE.
ALL PRICES ARE PER DAY, UNLESS OTHERWISE INDICATED.

Canon CANON CAMCORDERS



Canon XA25

\$125.00

A compact “run-and-gun” camera that is suitable for ENG, event coverage, independent and documentary filmmaking. The camera features a 1/2.84", 1920 x 1080 CMOS sensor that captures video at various frame rates up to 59.94p, including a 24p mode for a more cinematic feel. The integrated Canon 20x HD Optical zoom lens has a 35mm equivalent zoom range of 26.8 to 576mm and features an 8-bladed iris to render highlights in a more natural manner.



Canon VIXIA HF S200

\$75.00

Canon's VIXIA HF S200 Flash Memory Camcorder, with two SD memory card slots, offers Canon's most sophisticated feature set to date - blurring the line between consumer and professional. Record 8MP photos with incredible detail and lifelike color. Touch & Track allows you to achieve sharp focus and precise exposure for any subject. Native 24p Mode and 5.1-Channel Surround Sound ensures your audio complements the stunning realism of your video.



Canon VIXIA HF M500

\$75.00

A 1920 x 1080 high def cam with an SD/SDHC/SDXC memory card slot that supports up to 64GB memory cards. The camera's 1/3" HD CMOS Pro Sensor and image processor work together to provide stunningly detailed, life-like images that look great on your HDTV. also employs a genuine Canon 10x HD video lens, optical image stabilization, powered image stabilization and a 3.0" widescreen touch screen LCD display



GO PRO ACTION CAMERAS



4K

GoPro HD HERO 5 / HERO 4 Black Edition

\$50.00

- Hero 4 Professional 4K30, 2.7K60 and 1080p120 video, 720p240 video for super slow-motion playback and 12MP photos at up to 30 frames per second. Waterproof to 131' (40m) with housing.
- Hero 5 4K video and 12MP photos in Single, Burst and Time Lapse modes. Waterproof to 33ft (10m) without housing.

PRICES SUBJECT TO CHANGE WITHOUT NOTICE.
ALL PRICES ARE PER DAY, UNLESS OTHERWISE INDICATED.

SONY SONY CAMCORDERS



PMW-EX3 XDCAM EX

CALL

The PMW-EX3 compact camcorder with an interchangeable lens system incorporates three 1/2-inch type Exmor™ Full HD CMOS sensors, each with an effective pixel count of 1920 x 1080, delivering stunning-quality HD images in 1080P, 720P, and 1080i HD resolutions



PMW-EX1 HD Camera

CALL

Three 1/2" CMOS sensors, amazing 1920 x 1080 and 1280 x 720 HD recording capability plus flash memory recording.

- .8 with an adapter for EX-1..... \$40.00
- SBP 8 GB Card \$25.00
- SBP 16 GB Card..... \$50.00
- SBP 32 GB Card \$75.00



4K

Sony PXW-FS7

CALL

A professional 4K camera with a full-frame. Supports simultaneous or relay recording of HD or UHD 4K to integrated XQD media card slots. UHD Up to 60 FPS, HD Up to 180 FPS. 4096 x 2160 Via External Recorder.



Sony NEX-FS700

CALL

A fully professional large-sensor video camera, this compact, highly modular camera uses a very similar-sized Super 35 CMOS sensor as the FS100. But as a marked improvement over that earlier model's sensor, the FS700 features a native 4K resolution sensor.



4K

Sony PXW-Z100

CALL

Professional-quality 4K recording in a familiar handheld form factor.

It is capable of recording true 4K 4096x2160 resolution video at up to 50 and 60fps. Utilizing Sony's XVAC 4:2:2 10-bit intra frame recording format, the same found in the PMW-F55 CineAlta camera, the PXW-Z100 records 4K video at a maximum bit rate of 600Mbps.

SONY DECKS



HVRM10U Compact Player/Recorder

\$150.00

- Switchable HDV/DVCAM/DV format recording.
HDV 720/30p playback (no 720p recording)
- 60i/50i (NTSC/PAL) switchable
- Built in HD to SD down conversion (501/601/30F/25F)
- On-screen audio level meter

Samy's Camera **PRO RENTAL STAFF** will be happy to **CUSTOMIZE** rental packages upon request.

For long term rentals please inquire about **PACKAGE DISCOUNTS!**

CAMERA STABILIZATION

MOVI PRO



FREEFLY MOVI M5 **3-Axis Motorized Gimbal Stabilizer**

\$200.00

Designed for mid-sized DSLRs, mirrorless cameras, and camcorders weighing up to 5 pounds, including the lens. For camera stabilization the M5 uses three motors and an IMU (inertial measurement unit) to detect and counteract unwanted movement along three axes: pan, tilt, and roll. In particular, compensating for handshake or vehicle-induced vibration and reducing translation. There is a quick-release adapter available separately so that it can be mounted on cranes, jibs, vehicle mounts, and other camera support equipment. There is also an MR (multi-rotor) conversion kit, available separately, so that it can be mounted on a UAV.

dji



Ronin 3-Axis Brushless Gimbal Stabilizer **\$250.00**

A camera stabilization system designed to give the operator close to the freedom of unencumbered handheld shooting but without the hand-shake. Suitable for most camera types and configurations up to 16 pounds, Ronin uses brushless motors that work on three axes: one for side-to-side "roll" - keeping the horizon level - one for tilt, and one for pan. The system is computer-controlled and boasts a precision of control of $\pm 0.02^\circ$. An IMU (inertial measurement movement) detects movement and engages the motors to react, using algorithms to differentiate between intentional movement such as pans and tracking shots from unwanted shake. In addition to handheld shooting, the gimbal can be used in vehicle mounting scenarios and other contexts where vibrations or other abrupt movements would make tripods and rigid camera support systems unsuitable.

dji



Ronin M / MX

\$125.00

A 3-Axis Handheld Gimbal Stabilizer designed to give the operator close to the freedom of unencumbered handheld shooting but without the hand-shake.

- M: Supports Cameras up to 8 Pounds
- MX: Supports Cameras up to 10 Pounds
- Precision of Control: $\pm 0.02^\circ$
- Transmitter for Remote Pan/Tilt Control
- Tool-Less Balance Adjustment System

PRICES SUBJECT TO CHANGE WITHOUT NOTICE.
ALL PRICES ARE PER DAY, UNLESS OTHERWISE INDICATED.



REDROCK MICRO

Redrock DSLR Cinema

A comprehensive package for converting video DSLRs to useful cinema production tools. This bundle is compatible with most video DSLRs including the Nikon D90 and Canon 7D, Canon 5D Mark II, and can be adapted for use with full size DSLRs such as the Canon 1D MKIV and Nikon D3s.

The Redrock DSLR Cinema Bundle does not include external monitor, articulating (isreali) arm, or 35mm lenses.



Redrock DSLR Cinema Bundle

\$100.00

- DSLR baseplate
- Tripod platform
- 1x pair 12" 15mm carbon fiber rods (60mm spacing) for baseplate rod support
- microMatteBox (Deluxe Bundle including eyebrow and side wings)
- microFollowFocus Unit
- microHandle top handle for carrying, and low mode shooting
- 1x pair 12" 15mm carbon fiber rods for side rods
- 3x 15mm support arms for cage
- 1x pair 9" 15mm carbon fiber rods for top rods



Redrock Eyespy Bundle

\$60.00

For a more traditional shouldermount shooting style we offer the EyeSpy rigs. EyeSpy starts with the shoulderpad, 18" 15mm carbon fiber rods, and single rubberized handgrip from the popular microShoulderMount. We've added an additional rod extension to center the camera for viewfinder use, and topped it off with the DSLR baseplate, and microFinder loupe accessory.

- Shoulderpad
- Handgrip
- 18" 15mm carbon fiber rods
- MicroLink4 offset for viewfinder use
- Choice of offset for standard DSLR body or body with battery grip
- DSLR baseplate
- microFinder loupe accessory
- microBalance weights (2)
- microFollowFocus v2
- Weight 6 lb 11 oz

PRICES SUBJECT TO CHANGE WITHOUT NOTICE.
ALL PRICES ARE PER DAY, UNLESS OTHERWISE INDICATED.



REDROCK MICRO

Captain Stubling

The Captain Stubling builds off the UltraPort by incorporating the microFollowFocus for precise focus control, and moving one of the handgrips back on a 4" grip rod so the rig can be steadied in both hands while the thumb and forefinger of the left hand control focus.



Captain Stubling Bundle

\$50.00

- DSLR Baseplate
- Handlebar rod clamp
- Two Rubberized Hand Grips
- One 4 inch grip rod
- One 4 inch handlebar rod
- Two 9 inch carbon fiber rods



The Event Bundle

\$45.00

- DSLR Baseplate
- Two 6 inch 15mm carbon fiber rods
- microBrace body pad accessory kit
- Two Rubberized Hand Grips
- Handlebar rod clamp
- Two 4 inch handlebar rods



microRemote Handheld Controller

\$150.00

Allows for wireless focus control of the microRemote System for use on setups such as Steadicams, Jib Arms, and Gimbal Stabilizers

- Fingerwheel Control with Collins clamp..... \$25.00



Micro Follow Focus Blue

\$50.00

The unit mounts solidly on any 15mm rod support system.

Compatible with cinema lenses, this follow focus incorporates unique hard stops for perfect focus every time. Additional features of this unit include: 0.8 film pitch drive gear, 3D marking disk, industry-standard accessory port for focus pulling whips and cranks, and a quick release clamp.



UltraCage C300

\$50.00

The ideal shoulder-mount rig for handheld shooting when using an external monitor or third party EVF for monitoring. The Field Cinema Bundle combines the best of Redrock's cinema accessories with the new ultraCage blue for the C300 to make a rig that is comfortable for all-day shooting and gives you the C300-specific features of the ultraCage.

UltraCage 5D Mark II / III

\$75.00

PRICES SUBJECT TO CHANGE WITHOUT NOTICE.
ALL PRICES ARE PER DAY, UNLESS OTHERWISE INDICATED.



ARRI CAMERA SUPPORT SYSTEMS



ARRI SUPPORT SYSTEM

CALL

For decades ARRI's bridgeplates, baseplates and bars have been recognised as the most stable and reliable support systems for film cameras and lenses. New models now bring the same tried and tested principles to the support of digital cameras, allowing even HD DV models to benefit from sturdy connection to grip equipment and a means of utilising film style accessories.



ARRI CAGE SYSTEM

CALL

The CAGE SYSTEM I fits to the Mini Base Plate MBP-3 and the baseplate for Canon C 100/ 300/ 500 cameras. The cage offers a non-obstructive solution for the mounting of accessories through industry-standard 3/8-16" and 1/4-20" interfaces.



ARRI MATTEBOX

CALL

Designed for situations in which compactness and minimal weight are crucial, ARRI's lightweight matte boxes clamp directly to the front of almost any film or digital lens. The four different matte boxes in this range incorporate multiple filter trays and cater to every standard filter size.



ARRI FOLLOW FOCUS

CALL

Smooth, quiet and ergonomic in operation, ARRI's follow focus units are mainstays of the industry and can be set up in an almost limitless number of configurations for ease of use. The newly expanded range is made up of purpose-designed models for both film and digital cameras.

GLIDECAM
INDUSTRIES INC.**GLIDECAM STABILIZERS****Glidecam HD2000****\$45.00**

- Weighing from 2 to 6 pounds.
- Head Dimensions: 7.50" x 4.125" x 1.00"
- Base Platform Dimensions: 11.50" x 4.00" to—15.00" x 4.00"
- Central Support Post: 1.00" diameter
- 15" tall in shortest mode 22" tall in longest mode
- Weight: 2.537 pounds without counter weight plates.
- Each Custom Counter Weight Plate averages .272 pounds.
- The Glidecam HD-2000 includes 12 custom counter weight plates.
- 12 counter weight plates = 3.264 pounds
- Camera Plate has 1/4" mounting holes

**Glidecam HD4000****\$55.00**

- Designed for compact and full size cameras weighing from 4 to 10 pounds
- Head Dimensions: 8.750" x 5.000" x 1.00"
- Base Platform Dimensions: 13.75" x 4.75" to 18.25" x 4.75"
- Central Support Post: 1.00" diameter
- 20" tall in shortest mode
- 28" tall in longest mode
- Weight: 3.315 pounds without counter weight plates.
- Each Custom Counter Weight Plate averages .272 pounds.
- The Glidecam HD-4000 includes 12 custom counter weight plates.
- 12 counter weight plates = 3.264 pounds
- Camera Plate has 1/4" & 3/8" mounting holes

STEADICAM**STEADICAM STABILIZERS****SteadyCam Pilot****\$250.00**

The PILOT with IDX battery system provides the user with a complete system. Through the addition of the users camera and a SteadySTAND or similar balance stand the unit is ready to use. The IDX E-7S battery is based on the V-Lock mounting system and will provide power for the on board monitor and any optional accessories. Should the camera have a 12 volt input or a converter for 7.2 Volt operation the IDX battery has sufficient capacity to power both the camera, monitor and accessories

PRICES SUBJECT TO CHANGE WITHOUT NOTICE.
ALL PRICES ARE PER DAY, UNLESS OTHERWISE INDICATED.

CAMERA SUPPORT SYSTEMS

READY RIG™

Alba Ready Rig

\$60.00



The Ready Rig* is new a shoulder-mounted DSLR / HDV camera stabilizer. Its 4-point stabilization system balances and completely eliminates weight. The camera floats in front of the operator. Achieve stable continuous camera movements or adjust the rail system close to the body for steady hand-held shots. Hands-free operation allows for easy access to pull focus, operate a zoom lens, or adjust camera settings. The Ready Rig is proudly made in America.

- 4 points of stabilization
- Eliminates camera weight
- Achieve Dutch Angles
- Pull focus and zoom simultaneously
- Monitor & Accessory Mounts
- Change lenses without removing camera
- Suggested load capacity 12-17lbs.
- Hands-Free Operation
- Instantly reposition camera low and high
- 180° tilt head
- Perfect for DSLR & HDV Cameras



Alba Ready Rig GS

\$75.00

Newly designed waist support system evenly distributes the weight across your hips.

- Y axis stabilization, supports up to 30lb
- Extended range of motion
- Quick release connector for gimbals
- Carbon Fiber Rods
- Pass through a doorway or sit in a car with ease

HABBYCAM
HOLLYWOOD

HabbyCam HD Camera Brace

\$40.00



A heavy duty cinematic camera support system that will allow any filmmaker to achieve professional results. The Habbycam HD camera support is used around the world by professional cinematographers to help support the camera's weight and achieve steady images.

PRICES SUBJECT TO CHANGE WITHOUT NOTICE.
ALL PRICES ARE PER DAY, UNLESS OTHERWISE INDICATED.

VIDEO RECORDERS



AJA Ki Pro Quad

\$150.00

Enables a manageable 4K/Quad HD/2K/HD workflow with the efficiencies of Apple ProRes and the flexibility of RAW data in a compact, solid state recording and playback package that easily mounts directly on a variety of cameras.

- Ki Pac 512GB Card \$50.00



ATOMOS

Atomos Ninja 2

\$35.00

10bit Smart Production for DSLRs & HDMI Cameras. Provides top quality recording but also features monitoring functions that help assess exposure, focus and calibration. Also available are intuitive signal detection and file management tools. All tasks are performed in an advanced yet simple touchscreen operating environment.



Atomos Ninja Blade

\$125.00

Features a 1280 x 720 resolution display with 325 dpi providing a sharp image. Records up to 1080 30p/60i resolution at 10-bit with 4:2:2 color sampling. On screen display system that allows you to select the functions you wish to control with a touch of your finger.



Atomos Samurai Blade

\$125.00

Camera-mounted recorder, monitor, WFM & deck for HD-SDI cameras. Captures 10-bit HD resolution video directly from your HD camera and stores it to an internal 2.5" laptop drive. Images are captured using Apple's ProRes codec or Avid's DNxHD codec.



PRICES SUBJECT TO CHANGE WITHOUT NOTICE.
ALL PRICES ARE PER DAY, UNLESS OTHERWISE INDICATED.

VIDEO RECORDER



Atomos Shogun 4K HDMI/12G-SDI Recorder and 7" Monitor

\$150.00

Combines a color-calibrated 1920 x 1200 resolution display with 4K video recording and edit-ready codecs. The Shogun utilizes 4K HDMI and 12G-SDI inputs to record clean output signals at resolutions up to UHD 4K (3840 x 2160) at 23.98, 24, 25, 29.97, and 30p, as well as Full HD (1920 x 1080) video up to 120 fps when used with capable cameras.



Atomos Shogun Inferno 7" 4K HDMI/Quad 3G-SDI/12G-SDI

\$150.00

1920 x 1200 on-camera recording monitor that combines 4K recording with a 10-bit FRC panel that supports native display of HDR (log) footage as well as high brightness viewing of Rec. 709 footage. It utilizes 4K HDMI and 12G-SDI inputs to support clean output signals at resolutions up to UHD 4K (3840 x 2160) at 60 fps, recording it to 2.5" SSDs using 10-bit, 4:2:2 Apple ProRes and Avid DNxHR codecs. The Inferno, unlike the similar Shogun Flame, supports Quad 3G-SDI input. It even supports DCI 4K (4096 x 2160) raw video streams over SDI from select Sony and Canon cameras, encoding it as ProRes/DNxHR files.

WIRELESS VIDEO TRANSFER



Bolt Pro Wireless 1080p60 SDI Monitoring Transmitter Receiver

\$150.00

\$25.00

Wirelessly transmits an uncompressed HD video signal in up to 1080p60 4:2:2 as far as 300 ft with zero delay. The receiver features two 3G-SDI outputs for dual monitoring. One of these can be used to pass the video signal to an optional Teradek Cube Encoder, which will stream the signal even further on by WiFi or Ethernet, although only in up to 1080p30.

PRICES SUBJECT TO CHANGE WITHOUT NOTICE.
ALL PRICES ARE PER DAY, UNLESS OTHERWISE INDICATED.

MONITORS

Marshall Electronics



7" Marshall V-LCD70XP Pass Thru-HDMI **\$90.00**

Offers standard features including a wide variety of formats and markers, 4 user-configurable front panel function buttons, RGB Check Field / Field Detect, RGB gain and bias control, 4-pin XLR power jack, and optical grade polycarbonate screen protection. Includes Marshall's industry leading FALSE COLOR and PEAKING Filters. Also comes in 2 other major module configurations: 3GSDI (Composite, YPbPr and 3G/HD/SDI) and HDA (Composite, YPbPr). Offers the ability to adapt up to nine different battery configurations for providing mobile operation in the field.

TVlogic



TV Logic VFM056WP

\$90.00

The TV Logic VFM-056WP monitor is ideal for HD/SLR and Compact HD work. Features include a lightweight design, LED backlit LCD, DSLR Scale, Focus Assist, Various Scan Modes, Markers, Audio Level Meter with speaker and time code display. This monitor converts the HDMI input signal to an HD-SDI output.

Panasonic



Panasonic HD BTLH Monitor

\$100.00

The BT-LH 1700W 17" widescreen production-quality monitor features two auto-switching SDI / HD-SDI inputs, waveform monitoring, and freeze frame/split screen functions.

SONY



Sony PVM-1741 Monitor

\$125.00*

The PVM-1741 "All in one" OLED picture monitor delivers unparalleled picture quality, all in a compact design. Superb black performance, wide colour gamut, and quick response with virtually no motion blur. By combining the Sony OLED display panel (Full HD, 10-bit driver) and Sony's OLED processing technologies, the PVM-1741 OLED monitor delivers groundbreaking picture quality.

*4 day week rental

PRICES SUBJECT TO CHANGE WITHOUT NOTICE.
ALL PRICES ARE PER DAY, UNLESS OTHERWISE INDICATED.

MONITORS

smallHD

SmallHD 502

\$50.00



The SmallHD 502 is the lightest 5-inch, 1080p Full HD field monitor with color capabilities that rival OLED technology. It's a mere 7.4 oz light and is able to reproduce 100% Rec 709 color. HDMI & SDI on-camera monitor with 3D LUT support.



SmallHD Sidefinder

\$20.00

Fully featured HD viewfinder with a 5-inch flip-out 1080p display. Gives shooters all the benefits of using a field monitor and an EVF, without compromising speed, agility, or quality of the image. Highest resolution EVF and the highest resolution 5-inch on-camera monitor in one device.



SmallHD 702

\$90.00

With a 1000nits, 1920x1080 LCD, The 702 Bright is pixel perfect for daylight shooting. The LCD panel features optically bonded glass with anti-reflective coating. Sony L Series and Canon LP-E6 battery solution (no battery plate required). Built on SmallHD's Page Builder OS.



SmallHD DP4

\$60.00

DP4 4.3" On-Camera LCD Field Monitor features HDMI, component, and composite video inputs supporting video signals up to 1920 x 1080. Milled aluminum front frame with hard plastic backing. HDMI pass through allows you to send the HDMI signal downstream without requiring additional hardware. Has tools such as focus assist, false color, framing guides, image scaling, image flip, and monochrome.



SmallHD DP7

\$90.00

SmallHD DP7-Pro LCD offers highly flexible 3D LUT support and an extensive set of monitoring tools. Features a 7" IPS LCD display with a 1280 x 800 HD resolution, 8-bit color depth, and 800:1 contrast ratio. Connections include HD-SDI and HDMI input and output, as well as a Hirose input that supports an optional SmallHD Component/Composite breakout cable. Made with a reinforced milled aluminum housing capable of withstanding the pressure of a 4x4 truck running over it, yet it weighs only 1.2 lb.

PRICES SUBJECT TO CHANGE WITHOUT NOTICE.
ALL PRICES ARE PER DAY, UNLESS OTHERWISE INDICATED.

MULTIMEDIA PROJECTORS

Canon

Canon REALiS WUX10 Projector

\$300.00

3200 ANSI lumens



Canon's top of the line projector, delivering the highest resolution of any Canon projector. The world's first WUXGA (1920 x 1200) projector using LCOS technology, the WUX10 provides spectacular image quality, resolution, and color reproduction.

Canon REALiS SX6 Projector

\$300.00

3500 ANSI lumens



The Canon Realis SX6 Multimedia Projector joins the Realis SX60, X600 and the award-winning Realis SX50 projector to create a full line-up.

Canon REALiS SX80 II Projector

\$150.00

3000 Lumens



Native SXGA+ Resolution (1400 x 1050), 1.5x Zoom Lens, HDMI Version 1.3 Deep Color, Network-ready RJ-45 Port. Ease of use and flexibility.

CASIO

CASIO PROJECTORS

XJ-A246

\$100.00

2500 Lumens, WXGA (1280 x 800), USB + Wireless included.



Combines Laser and LED technology for amazing high brightness and can last up to 20,000 hours. The Slim is an earth-friendly, low maintenance, 5 pound projector with features such as a 2X Power Zoom Lens making it a great portable projector. The Slim Projector eliminates the need for a short life mercury lamp (typically 3000 hours) and is economical to operate.

XJ-H2650

\$150.00

Up to 3500 Lumens, WXGA (1280 x 800) & Automatic Brightness Adjustment. Increased I/O connectivity, are DLP 3D Ready and have auto brightness adjustment to save power and reduce eye fatigue. Interactive Whiteboard ready (USB models only.)



PRICES SUBJECT TO CHANGE WITHOUT NOTICE.
ALL PRICES ARE PER DAY, UNLESS OTHERWISE INDICATED.



PROFOTO POWER PACKS



Pro 10 Power Pack

2400W/S from 2 Outlets

Built-In TTL Receiver

Wireless TTL and Power Ratio from 330'

Flash Durations as Short as 1/80,000 Sec

- with AC cord & 2 sync cords \$150.00



Pro 8A Air Power Pack

2400 Watt/Seconds (100-240VAC)

2 Independently Controlled Head Outlets

0.5 Second Recycle Time at Full Power

Built-in Profoto Air Radio Slave

- with AC cord & 2 sync cords \$100.00



Pro 7A 2400 Pack

2400W/S, 3 lamphead connections, built-in

slave and auto-bracketing. Slow, fast, and turbo

recharging options allow recharging as fast as

1.45 sec. Multi-Voltage Capable.

- with AC cord & 2 sync cords \$65.00



Pro 7A 1200 Pack

- with AC cord & 2 sync cords \$50.00

Our inventory is updated regularly - if you don't see it here, give us a call!



PROFOTO POWER PACKS, RECEIVER & LIGHTS



Pro-B4 1000 Air Pack

\$125.00

Supplies 1,000W/S of portable flash power in a compact, 21.6 lb package, with the most advanced long-life battery (LiFe) now available.

- Extra Batteries \$30.00
- Pro B Head \$25.00



Pro B2 Built-in Pocket Wizard Receiver

1200W/S Battery Powered generator for use anywhere, anytime. Up to 200 full power flashes from a single battery cassette. Fast recycling: 0.04-1.8 sec.

- Battery, battery charger & 2 sync cords \$90.00



Profoto Light Bars

- Small 2' \$100.00
- Medium 4' \$125.00
- Large 6' \$200.00

PRICES SUBJECT TO CHANGE WITHOUT NOTICE.
ALL PRICES ARE PER DAY, UNLESS OTHERWISE INDICATED.



PROFOTO STROBES & ACCESSORIES

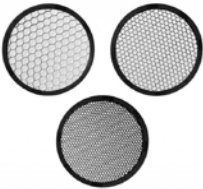


- Pro Head with reflector..... \$25.00
- Pro Twin Head \$45.00
- Pro Ringflash bracket & reflector \$45.00
- Pro 7 Ring Flash 2..... \$50.00
- Fresnel Spot (Old Style) \$50.00
- Pro Fresnel Spot b/i Head..... \$85.00
- ProzoomSport (New style)..... \$125.00

Profoto 7 Accessories



- Standard Umbrella..... \$8.00
- RFI Octabox 3' \$30.00
- RFI 3' Grid..... \$20.00
- RFI Octabox 5' \$35.00
- Profoto 5' Umbrella \$50.00
- Profoto 7' Umbrella..... \$60.00
- Profoto 8' Umbrella \$80.00
- Profoto Giant 180..... \$125.00
- Profoto Giant 300 \$300.00
- Chelsea 7' \$15.00



- Head extension Cable – 5m..... \$10.00
- Head extension Cable – 10m \$12.00
- Pro Globe..... \$20.00
- Grid Set – 5, 10, 20 degrees \$5.00 (each)



- 18" Grid – 10 degrees \$12.00
- 20" Grid – 25 degrees \$15.00
- Grid Holder \$5.00
- Gel Holder \$5.00
- 7" Grid Reflector \$5.00
- Narrow Beam Reflector..... \$6.00
- Telezoom Reflector \$25.00
- Wide Zoom Reflector \$15.00
- 50D Magnum \$12.00
- Softlight Reflector (white or silver)..... \$15.00
- Barndoor \$8.00
- Snoot..... \$5.00
- Iris Diaphragm \$8.00
- Hardbox..... \$30.00

PRICES SUBJECT TO CHANGE WITHOUT NOTICE.
ALL PRICES ARE PER DAY, UNLESS OTHERWISE INDICATED.



PROFOTO POWER PACKS & STROBES



Profoto B2 250 AirTTL Power Pack

\$40.00

with 1 battery, 1 charger & 1 sync cord

- Profoto B2 250 Head..... \$15.00
- Profoto B2 250 Battery..... \$15.00
- 250W/S, Built-in AirTTL
- Optional Air Remote TTL for Canon, Nikon
- High Speed Sync and Freeze Mode
- 2 Asymmetrical Outlets



Acute 2R 1200 / 2400

- 1200W/S Pack..... \$35.00
- 2400W/S Pack..... \$45.00
- Acute 2 Head with reflector..... \$25.00
- Acute 2 Ring Flash..... \$35.00



Profoto Acute B2 600 AirS Lithium

- Battery, battery charger & 2 sync cord..... \$50.00
- Extra Battery..... \$20.00
- Acute B Head with Profoto Disc reflector..... \$20.00



Profoto D2 AirTTL Monolight

Freeze action at up to 1/63,000 of a second. Shoot bursts of 20 images per second. Sync with camera shutter speeds as fast as 1/8,000 of a second.

- 500W/S..... \$45.00
- 1000W/S..... \$55.00

Profoto D1 Air Monolight

- 500W/S..... \$35.00
- 1000W/S..... \$45.00



Profoto B1 500 AirTTL Battery Powered Flash

\$75.00

- Full E-TTL II with Canon Cameras
- 500W/S, 9-Stop Power Range
- Up to 220 Full-Power Flashes
- Flash Duration: 1/19,000 - 1/1,000 Sec
- Extra Battery..... \$15.00
- Air Remote for Canon..... \$20.00
- Air Remote for Nikon..... \$20.00
- Air Remote for Sony..... \$20.00

PRICES SUBJECT TO CHANGE WITHOUT NOTICE.
ALL PRICES ARE PER DAY, UNLESS OTHERWISE INDICATED.

BRONCOLOR STROBES



Broncolor Scoro A4 Pack

\$110.00

Power pack with 3 lamp outlets, controlled over 3 individual channels (like 3 power packs in one). Max. 3200 J, min. 3 J flash energy. Individual (asymmetrical) output distribution. Maximum control range: over 10 f-stop intervals or over full 11 f-stop levels in whole or 1/10 f-stop intervals. Very high repetitive precision. Automatic stabilisation of the colour temperature ECTC (Enhanced Colour Temperature Control) over the whole control range and up to 6 f-stops in asymmetrical mode. Internal discharge when the power is reduced. Photocell, infrared and RFS receiver for flash triggering (all can be switched off separately). Front panel with modern, dimmable, LCD menu system, with illuminated silicone keyboard resistant to scratches and LED displays. Selectable flash duration.

Samy's Camera **PRO RENTAL STAFF** will be happy to **CUSTOMIZE** rental packages upon request.

For long term rentals please inquire about **PACKAGE DISCOUNTS!**

BRONCOLOR STROBES



Broncolor Grafit A4 Power Pack

\$85.00

3200W/S, f/90-1/3 output, 1/125-1/6000 flash duration +0.1, recycle time 0.03-3.2 seconds. IR / Cord / Cell triggering asymmetrical / symmetrical distribution. 3 lamp head outlets with AC cord, 2 sync cords & sync ext.



Broncolor Grafit A2 Power Pack

\$65.00

1600W/S, f/64-1/3 output, 1/250-1/6000 flash duration +0.1, recycle time 0.03-1.6 seconds. IR/Cord/Cell triggering asymmetrical / symmetrical distribution. 3 lamp head outlets w/ AC cord, 2 sync cords & sync ext.



Broncolor Pulso Lampheads

Flashtubes have a UV absorption coating, quick change bracket, powerful low-noise cooling fans, halogen modeling light.



- Pulso G4 Head \$35.00
- Pulso 4 lamphead, 3200W/S \$35.00
- Pulso F4 lamphead (focusable) \$35.00
- Pulso 4 Twin 2x3200W/S \$50.00
- Para Ring Flash 4 Twin \$75.00
- Ring Flash \$45.00

Broncolor Move 1200L Pack

\$100.00

Built around the improved Move 1200 L battery powered pack. Two outlets distribute 1,200W/S of flash power either symmetrically or asymmetrically over 9.0 full stops and is variable in either 1/10 stop or 1 stop increments. Recycling time is a super-fast 0.02 to 0.9 sec. (min/max) with action-stopping flash durations of 1/1,000 / 1/350 sec (t0.5 / t0.1) at full power and as short as 1/20,000 / 1/8,500 at minimum power.

With Battery & Charger

- Mobil LED Head \$35.00
- Extra Battery \$30.00
- RFS 2 Transmitter \$20.00



PRICES SUBJECT TO CHANGE WITHOUT NOTICE.
ALL PRICES ARE PER DAY, UNLESS OTHERWISE INDICATED.

BRONCOLOR STROBES

broncolor
THE LIGHT



Siros 800 S

\$50.00

Broncolor's new compact device combines unbeatable flash and super-fast charging times with reliable and intuitive handling. At 400 and 800 joules, Siros is not only available in two output versions but also as a basic- or S-model.



Broncolor Lighting Control

- Pulso Spot 4 Projector
(3200W/S max requires A4/4 pack) \$75.00
- Optical snoot for Pulso Spot 4
(100mm or 150mm) \$30.00



Pulso Floater

This theatrical-type spot connects to any current lamphead & mimics a 340mm Fresnel spotlight. Focusable from 15°.

- Broncolor Pulso Floater \$60.00



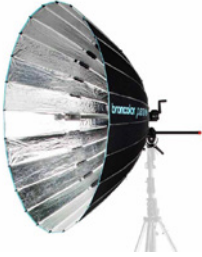
HMI FT1600 Kit

\$275.00

- Dimmable, provides constant color at all times, and so is easy to mix with flash and daylight. The light is absolutely flicker-free and thus perfect for high-speed exposures.
- With four clamping levers (Para 88 HR and 133 HR) or a crank (Para 177 and 222) the reflectors can be unfolded first, independently of everything else. The focusing rod for that Para is then mounted and the lamp with its back reflector fitted at the front. The other end of the rod takes the lamp head with integral power supply unit – and... finished!

PRICES SUBJECT TO CHANGE WITHOUT NOTICE.
ALL PRICES ARE PER DAY, UNLESS OTHERWISE INDICATED.

BRONCOLOR STROBE ACCESSORIES

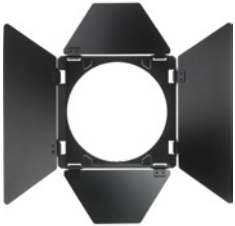


Para Umbrellas

- Para 88 FB Reflector \$150.00
- Para 88 HR Reflector \$200.00
- Para 133 Reflector..... \$175.00
- Para 133 HR Reflector \$225.00
- Para 177 (69.7" Diameter)..... \$200.00
- Para 222 (87.4" Diameter)..... \$300.00
- Para 330 FF (11' diameter)..... \$350.00
- Para adapters (Pulso, Profoto, Joker)..... \$20.00

Para diffusers and grids available for an addition charge

Broncolor Accessories*



- Pulso head extensions 16' \$10.00
- Pulso head extensions 32' \$15.00
- P70 Grid spot set (set of 3)
or Pulso Honeycomb grids (set of 3) \$24.00
- P45 Grid spot set (set of 3) \$30.00
- Barndoors 4 door \$10.00
- Snoots \$12.00
- Soft light reflector..... \$20.00
- Soft light grid..... \$15.00
- P70 Reflector (Pulso) \$10.00
- P45 Narrow angle reflector..... \$12.00
- P65 Reflector (Pulso 8) \$15.00
- P120 Wide angle reflector..... \$15.00
- Satellite Reflector \$55.00
- RFS Transmitter \$20.00
- Lightbar 120..... \$125.00
- Lightstick..... \$50.00

*Stands & standard umbrellas available at no extra charge upon request.

PRICES SUBJECT TO CHANGE WITHOUT NOTICE.
ALL PRICES ARE PER DAY, UNLESS OTHERWISE INDICATED.



DYNALITE STROBES



M2000WI Power Pack

- 2000WI 4 lamphead connections
with 2 sync and 1 sync extension \$40.00

M1000WI Asymmetrical Power Pack

- 4 lamphead connections, symmetrical / asymmetrical power distribution, 1 stop power variator, 2 sec recycling to full power, 4 way sync system, normal household AC sync, 2 channel internal infrared receiver and built in Wein slave..... \$30.00

Lampheads



- 2040 fan cooled lamphead (standard)
with head extension \$15.00
- 4040 Quad Head; 4 X 1000 W/S
with 9" or 10" reflector..... \$20.00
- 4080 Quad Head; 4 X 1000 W/S
with 9" or 10" reflector..... \$20.00
- Ring Flash..... \$35.00

Dynalite Accessories

- Head extension 15' \$5.00
- Head extension 25'..... \$8.00
- 10" reflector..... \$3.00
- Snoot (angle reducing ring) \$3.00
- Grid set (4) with Dyna Lite adapter..... \$10.00
- Grid adapter only..... \$5.00
- Barn Door set \$5.00



Dynalite XP-800 Pure Sine Wave Inverter

- Portable AC Power Source with 1 battery \$50.00
- Extra batteries \$15.00

PHOTOGENIC SYSTEM



ION Lithium Inverter Pack

\$25.00

Allows you to take your studio strobes on the road or off the road without electricity and without noisy generators or inverters.

Includes Pack, Battery and Charger.

- Spare Battery..... \$10.00



PRICES SUBJECT TO CHANGE WITHOUT NOTICE.
ALL PRICES ARE PER DAY, UNLESS OTHERWISE INDICATED.

SOFT LIGHTS

Elinchrom Octabanks Octa 6' Beauty Umbrella

Super fast to set up, with the unique EL folding construction. 360° rotating system. All Indirect Light.



Banks are supplied with a Carrying Bag

- 27.5" Octabank for Profoto heads..... \$35.00
- 36" Octabank for Profoto heads \$25.00
- 39" Deep Octabank \$35.00
- 39" Octabank..... \$35.00
- 53" Deep Octabank \$45.00
- 59" Deep Octabank \$45.00
- 69" Octabank \$45.00
- 72" Octabank for Profoto heads..... \$60.00



Mola Mantti Soft Light Reflector

Light Output: The Mola's efficiency is equal to or better than other modified parabolic reflectors, and thanks to a specially formulated reflector coating, Mola reflectors produce light of exceptional clarity. In use, Mola reflectors provide a slight warming effect to light. Internal and external diffusers are used to modify light temperature and dampen UV light output.



- Mola Beauty Dish 22" white surface \$35.00
- Mola Beauty Dish 28" white surface \$45.00
- Mola Beauty Dish 33.5" white surface \$55.00
- Mola Beauty Dish 43.5" white surface \$75.00
- Mola Beauty Dish 28" P-Surface \$65.00
- Mola Beauty Dish 33.5" P-Surface \$75.00
- Mola Beauty Dish 43.5" P-Surface \$95.00



QUANTUM FLASHES AND SLAVES



Q Flash T5dR Digital Flash Head

The Q Flash T5d-R is the latest evolution in Quantum's proven Q flash portable flash line. The new 5d-R series used with Quantum's FreeXwire digital radio system, now support wireless control of all dedicated camera-flash functions-Manual, TTL, Auto, Auto-fill and TTL-Ratio-up to 500 ft. away. Qflash "Digital" model T5d & X4d are "dedicated" to the latest digital and film camera systems through its own QTTL through-the-lens dedicated exposure control.

- Q-Flash T2 (Auto and TTL)..... \$30.00



Turbo 3 Rechargeable Battery

\$20.00

A high voltage battery that works with most shoe- and handlemount professional quality flash units and all Quantum Qflash, T-series and Trio/Pilot portable flashes. The Turbo 3 has the capacity to provide 1050 full-power flashes for shoe-mount and 750 flashes for handle-mount flash units.



Turbo Slim Compact

\$12.00

The Quantum Instruments Turbo SC Battery Pack ("S" for Slim and "C" for Compact) provides typical all-day flash shooting capacity like the standard Turbo, yet weighs less than 1 lb and fits easily in a shirt pocket.



Q Flash Trio (Nikon & Canon)

\$30.00

The new Qflash TRIO QF8 combines a Qflash head with built-in FreeXwire TTL radio and QTTL adapter for your digital camera. Slip it onto the camera hot-shoe, connect a Turbo with the included long power cable CQ8, and go.

Cables

- Nikon SB800/SB900 \$3.00
- Canon..... \$3.00

PRICES SUBJECT TO CHANGE WITHOUT NOTICE.
ALL PRICES ARE PER DAY, UNLESS OTHERWISE INDICATED.

HENSEL

PERFORMING LIGHT



MONOBLOCKS

Hensel Expert D500 Monoblock

\$35.00

- Recycles in a lightening 0.1 – 0.8 sec. And it does it at flash durations as short as 1/5800 sec.
- 8 f/stop range, down to 1/32 power in 0.1 stop increments, which makes it perfect for photographers using digital cameras
- Features Profoto Air radio, Hensel Strobe Wizard Plus and FREEMASK receivers

Hensel Integra Pro PLUS

\$30.00

- 500 watts
- Multi-voltage (110-240VAC)
- 6-Stop Power Range

LED / TUNGSTEN / HMI

ARRI



ARRI Skypanel S60-C

\$290.00

Fully Tuneable from 2,800 K - 10,000 K. Vibrant Color Selection (RG-B+W Color Gamut). High Color Rendering. Low Power Consumption (420 W Nominal). Lightweight and Compact.

- Snapgrid 40°..... \$30.00
- Softbox (Chimera)..... \$35.00
- Softbox ring..... \$10.00

ARRI Tungsten Fresnels

Fresnels include barndoor, Gel frame scrims, & stand

- 150: 150W fresnel..... \$12.00
- 300: 300W fresnel..... \$15.00
- 650: 650W fresnel..... \$20.00
- 1K: 1000W fresnel..... \$25.00
- 2K: 2000W fresnel..... \$35.00
- 5K: 5000W fresnel..... \$75.00
- 2000W softlight..... \$40.00

ARRI HMI Fresnels

HMI Fresnels include compact head with ballast, head cable, barndoor, scrims, gel frame and medium roller.

- 1.2 K: 1200W..... \$150.00
- 2.5 K: 2500W (Bates connection only)..... \$250.00
- 4.0 K: 4000W (Bates connection only)..... \$350.00

1.8K M18 HMI PAR

\$200.00

PRICES SUBJECT TO CHANGE WITHOUT NOTICE.
ALL PRICES ARE PER DAY, UNLESS OTHERWISE INDICATED.

HMI LIGHTING

kobold



The Weatherproof Daylight System

DW800 Lots of light in wind and weather: DW 800 is a focusable multifunctional kobold 575/800 watt daylight fixture, and can be equipped with a wide range of reflectors to meet any need. The selected attachment transforms the lamp base into a fullfledged PAR, Open Face, or soft diffused source with the softbox adapter.

- DW 800 \$225.00
- DW 400..... \$175.00

broncolor
THE LIGHT



HMI FT1600 Kit

\$275.00

- Dimmable, provides constant colour at all times, and so is easy to mix with flash and daylight. The light is absolutely flicker-free and thus perfect for high-speed exposures.
- With four clamping levers (Para 88 HR and 133 HR) or a crank (Para 177 and 222) the reflectors can be unfolded first, independently of everything else. The focusing rod for that Para is then mounted and the lamp with its back reflector fitted at the front. The other end of the rod takes the lamp head with integral power supply unit – and... finished!

Profoto
The Light Shaping Company™



Profoto HMI

\$150.00

1.2 K: 1200 watt compact head with ballast, head cable, barndoor, scrims, gel frame

- Profoto Daylight 800 \$225.00
- Profoto Tungsten 1000 \$35.00

HMI LIGHTING

K 5600 L I G H T I N G

Motion requires continuous light, and digital loves daylight. Our 200, 400 & 800W Jokers deliver flicker-free daylight to capture both still and video – without re-lighting. Jokers look and perform just like flash heads. Add the Crossover Adapter and they fit into the reflectors you've been using for years. You can easily branch out to cinema-style lighting with our Beamers, Soft Tubes and many other light shapers.



Joker Bug 200

\$125.00

The Joker-Bug 200 has an output comparable to 750/1000 watt quartz fixture, but with a power draw of only 3 amps. This unit has become a standard for small interiors, interviews, documentaries and car shots.

Joker Crossover 400

\$175.00



The Joker-Bug 400 output is comparable to a 1500/2000W quartz fixture, but with a power draw of only 5.5 Amps. It's powerful enough to make a difference in daylight interiors even through diffusion materials and light banks.

Joker Crossover 800

\$225.00

The Joker-Bug 800 fixture throws a beam of light of 5235 foot-candles 1.5 feet in diameter from 20 feet with the Spot lens. It throws a beam of 164 foot-candles 16 feet in diameter from 20 feet with the Super Wide lens



The BIG-EYE

\$75.00

The BIG-EYE Joker accessory will turn any Joker-Bug system into a Giant Focusable Fresnel Beauty light. This 18K style (24" diameter) polymer Fresnel lens will deliver: When you need a bigger, harder source as a front, but you do not want the source to be too small and therefore too harsh



Joker Bug 1600W Zoom Beamer Kit

\$250.00

Includes: Head with 9' cable, clear glass beaker, safety wire, Lamp 5600K, 750 Hrs SE, UV Stop, Electronic Power Supply, 110/240V, 50/60Hz, 25' Extension Cable, Zoom Beamer Optical Accessory, Scrim Bag 1600W Joker Zoom, 2ea., Full Double Scrim 1600 W Zoom - 12", Full single Scrim 1600W Zoom - 12", Four Leaf Barndoor, Frosted Glass UV Protection Beaker

PRICES SUBJECT TO CHANGE WITHOUT NOTICE.
ALL PRICES ARE PER DAY, UNLESS OTHERWISE INDICATED.

BRIESE
LICHTTECHNIK



BRIESE LIGHTING & ACCESSORIES

Focus Umbrellas (for Flash & HMI)

- 77 cm (2.3 ft.)..... CALL
- 100 cm (3.3 ft.)..... CALL
- 140 cm (4.6 ft.)..... CALL
- 180 cm (5.9 ft.)..... CALL
- 220 cm (7.7 ft.)..... CALL
- Briese Head adapted to Profoto CALL
- Briese Head adapted to Broncolor..... CALL

Briese Light Tools and Fabric Grids

- 77 cm (2.3 ft.)..... CALL
- 100 cm (3.3 ft.)..... CALL
- 140 cm (4.6 ft.)..... CALL
- 180 cm (5.9 ft.)..... CALL
- 220 cm (7.7 ft.)..... CALL

phototools PHOTOTOOLS LIGHT MODIFIERS



Collapsible Beauty Dish 32"

Includes internal/external diffusion panel, front light-shaping grid.
Adaptable to popular strobes.

- Silver \$20.00
- White \$20.00

Samy's Camera **PRO RENTAL STAFF** will be happy to **CUSTOMIZE** rental packages upon request.

For long term rentals please inquire about **PACKAGE DISCOUNTS!**

PRICES SUBJECT TO CHANGE WITHOUT NOTICE.
ALL PRICES ARE PER DAY, UNLESS OTHERWISE INDICATED.



KINO FLO LIGHT BANKS

Tegra 4Bank Universal Kit **\$100.00**

Combines the features of Kino's popular Diva-Lite and the 4Bank to bring you a lightweight fixture with universal, onboard dimming and an output equivalent to 1,000 tungsten watts.



Kino Flo Light Banks

Daylight or tungsten balanced fluorescent tubes for film, video or still.

- Parabeam 400\$100.00
- 48" x 4 Tube Bank*\$75.00
- 24" x 4 Tube Bank*\$65.00
- 24" x 4 Tube DIVA Lite Ultra-Brite 55W Bank*\$100.00
- Extra Bulb\$5.00 (each)

*with yoke, stand and shipping case



Kino Single 4' Fixture **\$35.00**

Kino Barfly 400 Kit **\$100.00**

Kino Celeb 200 DMX LED **\$125.00**

Cool, energy efficient qualities that lighting professionals have come to expect from Kino Flo. Color temperature control, full-range dimming and programmable 2,700K to 5,500K presets.



Kino Image 85 **\$175.00**

Soft, shadowless display of daylight or tungsten quality light (CRI 95) that can be controlled without dramatic shifts in color. Uses 9 addresses.



PHOTOFLEX®

PHOTOFLEX STARLIGHT OCTA KIT

Our OctoDome nxt is designed to be used with the StarLite continuous light source. Now videographers and hot-light photographers can take advantage of this versatile and dependable lighting tool.

- The StarLite® OctoDome® nxt: 3 foot kit\$60.00

All-inclusive lighting system including:

- 2-3 foot OctoDome nxt
- 2-StarLite QL with standard components
- 4-lamps (2-500w; 2-1000w)
- 2-Medium LiteStand • 1-TransPac® GigBag



PRICES SUBJECT TO CHANGE WITHOUT NOTICE.
ALL PRICES ARE PER DAY, UNLESS OTHERWISE INDICATED.



TUNGSTEN HOT LIGHTS

Open Faced Focusing Lights

Includes light with stand and spare lamp.

- 650W Omni..... \$12.00
- 1000W DP..... \$15.00



Fill Light

Includes light with stand and spare lamp.

- 750W Totalight..... \$12.00

Lowel III Light Kit

\$45.00

Includes: 2 Totalight, 1 omnilight with barndoor, 2 umbrellas, 1 gel holder, 3 stands

Lowel Light Control Accessories

- Four-way barndoors (Omni, DP, M/R Softlight \$5.00

LED LIGHTING

LIGHT &
MOTION



Stella Pro 5000 LED Light*

\$50.00

COB 5000K LED. Brightness: 5,000 Lumens. 90 CRI and 93 TLCI. 120° Beam Angle, Waterproof to 328'.

Stella Pro 7000 LED Light*

\$60.00

COB 5000K LED. Brightness: 7,000 Lumens. TLCI 93, CRI 90. Dimmable up to 7000 Lumen Output. 120-Degree Beam Angle.

*Each fixture includes: barndoor, fresnel, and globe attachment

Fiilex

Fiilex Flexjet P200

\$60.00

Fiilex P360/P360EX 3 Light Kit

\$125.00

Gives you the ability to create interview or traditional 3 point lighting set ups. A powerful high quality specular light. It reveals color with great accuracy, and gives you control over the light quality.

LIGHT BANKS



Chimera Super Pro Plus

Recessed front screen, large hook & loop-sealed rear opening

- Extra Small (16" x 22")..... \$10.00
- Small (24" x 32")..... \$10.00
- Medium (36" x 48")..... \$15.00
- Large (54" x 72")..... \$20.00

Stripbanks

- Small Strip (9" x 36")..... \$10.00
- Medium Strip (14" x 56") \$15.00
- Large Strip (21" x 84") \$20.00



Quartz Bank

Ultra heat resistant

- Small (24" x 32")..... \$30.00
- Medium (34" x 46")..... \$40.00
- Large (54" x 72")..... \$50.00

Daylight JR/Video Pro

Increased depth and heat-resistant material

- Small (16" x 22") \$20.00
- Medium (24" x 32")..... \$25.00
- Large (36" x 48")..... \$40.00



Chimera Speed Rings

SPECIFY USAGE: Broncolor, Comet, Dynalite, Hensel, Lumedyne, Norman, Profoto, Speedotron, Arri, Lowel, etc..... \$3.00

Chimera Grid Fabrics

- Extra Small..... \$15.00
- Small \$15.00
- Medium \$25.00
- Large \$30.00

Chimera Grid Fabrics (STRIP)

- Small \$15.00
- Medium \$25.00
- Large \$30.00

PRICES SUBJECT TO CHANGE WITHOUT NOTICE.
ALL PRICES ARE PER DAY, UNLESS OTHERWISE INDICATED.

PocketWizard **POCKET WIZARD REMOTE TRIGGERS**



Pocket Wizard / Pocket Wizard Plus / Transceivers

Has a range of 800' & 4 or 16 channels. Can be used to trigger a wide range of cameras, strobe units and power packs.

Please specify.

- Transmitter \$10.00
- Receiver \$10.00
- Cables (Hasselblad/Mamiya/Nikon)..... \$7.00
- Transceiver \$10.00



Pocket Wizard PlusX

\$10.00

10 Standard Channels. Range up to 500 meters (1600 feet).

Pocket Wizard PLUS III

\$12.00

- Transmitter \$12.00
- Receiver \$12.00
- Cables (Hasselblad / Mamiya / Nikon) \$7.00



Pocket Wizard Max 32 channel system

- Transmitter \$15.00
- Receiver \$15.00
- Cables (Hasselblad / Mamiya / Nikon) \$7.00



Litepanels®

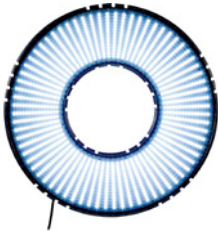
LITEPANELS

Litepanels 1 X 1

\$75.00



Battery & AC powered 1x1 Litepanels are lightweight, ultra-flat profile. 1x1 is the most versatile production light ever built. Designed for quick set up and operation, the fixture mounts easily over-head - or elsewhere - to bathe a studio in soft, directional, luminous output. Its modular housing can be combined into 2'x2' and 4'x4' multi-panel configurations to fit a wide range of jobs. What's more, the 1x1's optional snap-on battery allows for location shooting without generators or power cables. (Battery extra)



Litepanels Cinema Ringlite

\$200.00

Ringlite draws just 70 watts. Power is provided by an AC/DC switching power supply, which operates from 90-260VAC. The optional DC power supply allows the unit to run from a standard battery belt or other DC power sources.

- Mini Ring Light.....\$150.00



Litepanels Micro and Micro Pro

The Litepanels Micro features a conveniently located integrated dimmer dial at the top of its housing to instantly dim the light anywhere from 100% to 0, with minimal color shift. Output is flicker free and heat free and remains consistent. For additional control, a flip-down filterholder allows for work with the included color/ diffusion gels.

- Litepanels Micro: 3.3" W x 3.3" H x 1. 5" D..... \$25.00
- Litepanels Micro Pro: 5.5" W x 4" H x 1. 5" D \$35.00

LED LIGHTS

limelite®

Limelite Mosaic Bi-Color LED Panel with Barndoor

\$50.00



An ideal solution for multi-location productions with mixed light balances. Shift from 2800K or 5600K or anywhere in between with two simple push buttons. Instead of filtering a source's fixed color temperature, you can input the precise look and temperature that you want. Matching other Mosaic sources is easier too, thanks to the highly consistent nature of LEDs.

• Battery..... \$25.00

DRACAST



Draco 1000 1x1 Bi-Color LED

\$50.00

1' x 1' square panel light. Powerful and full-featured lighting fixture. Solid all-aluminum construction, have almost twice the output of other 1x1 panels at up to 12,500 lux, and are rated at 95 CRI.

westcott®



Westcott Ice Light 2

\$40.00

Ice Light 2 is engineered with a patented LED technology offering 50% brighter output than the original. Ice Light 2 offers 1,740 lumens of beautiful daylight-balanced output while maintaining a compact housing. Removable, replaceable lithium ion battery providing over an hour of runtime at full power. Balanced at 5500K and are rated for over 50,000 hours use.

LISTEC®
teleprompters

TELEPROMPTERS

PW-10DV

\$125.00



Turns your iPad® or Tablet into a Professional Teleprompter. The most versatile option for tablet teleprompting, features an adjustable camera mount allowing for virtually all shapes and sizes of DSLR and Video cameras.

PRICES SUBJECT TO CHANGE WITHOUT NOTICE.
ALL PRICES ARE PER DAY, UNLESS OTHERWISE INDICATED.

SOUND BLIMPS



Jacobson Sound Blimps

Housing for professional 35mm Canon and Nikon cameras which effectively eliminates the noise created by their operation.



Canon

- 1-DS \$75.00*
- 5D Mark II..... \$75.00*
- Canon or Nikon Tubes..... \$5.00
- Canon or Nikon Zoom Tubes..... \$10.00



KENYON GYRO STABILIZERS

For light plane and helicopter operation of still, motion picture, and video cameras.

KS-4 Gyro

\$60.00*

Weight 34 oz. For cameras up to 8 lbs. Complete with KP4 battery pack 11 5V 400 Hz inverter charger and case.



KS-6 Gyro

\$80.00*

Weight 52 oz. For cameras up to 12 lbs. Includes: 2 KP6 battery pack 115V 400 Hz inverters 2 chargers and case.



KS-8 Gyro

\$100.00*

Weight 82 oz. For cameras up to 30 lbs. Includes: 2 KP6 battery pack 115V 400 Hz inverters 2 chargers and case.

Kenyon XLR Battery Pack

\$25.00*

KS-4x4 Gyro

\$120.00*

Weights 4.8 lbs. Stabilizes equipment in the 5-8 lb range. Full 3 axis of stabilization.



KS-6x6 Gyro

\$175.00*

Weights 6.8 lbs. Stabilizes equipment in the 7-11 lb. Can run up to 2 hours on fully charged Ken Lab battery pack

*4 day week rental

PRICES SUBJECT TO CHANGE WITHOUT NOTICE.
ALL PRICES ARE PER DAY, UNLESS OTHERWISE INDICATED.

SLIDERS



Matthews DC Slider

CALL

Used for sliding camera systems in multiple angles. It also works as a mini-jib arm and can transform into a 6' tower. Equipped with a counterbalance mechanism, the DC-Slider offers a stable shooting platform even when set in extreme angles. A total of 26 lb. counterweight allows you to perfectly stabilize a camera system weighing up to 22 lb on the arm.



CINEVATE



- Cinevate Atlas 10 FLT 26" Slider \$40.00
- Cinevate Atlas 10 LTS 35" Slider \$50.00
- Cinevate Atlas 30 47" Slider \$55.00
- Cinevate Atlas 200 Slider \$80.00
- Cinevate Duzi 24" V3 \$50.00



- Kessler Philip Bloom Series
- Kessler Pocket Dolly Slider 3' \$75.00
- Kessler Cineslider 5' \$150.00
- Kessler Pocket Jib Pro \$115.00
- Elektra Drive Motor for Cineslider 5' \$25.00
- Elektra Drive Basic Controller \$25.00



Phototools 32" Camera Slider

\$35.00

Features three steel bearing rollers. Incorporates three sets of 1/4"-20 and 3/8"-16 mounting holes, allowing you to support it in the center or at both ends. Two removable height adjustable legs are also included for using the slider on the ground. Supports up to 19.84 lbs of weight.



PRICES SUBJECT TO CHANGE WITHOUT NOTICE.
ALL PRICES ARE PER DAY, UNLESS OTHERWISE INDICATED.

MICROPHONES & RECORDERS



A compact digital hybrid wireless receiver and transmitter bundled with a lavalier microphone and accessories for capturing audio. Includes the LR portable receiver, LMB portable transmitter, M152/5P omnidirectional lavalier microphone, LRSHOE camera shoe mount, one TA3F to XLRM cable, one TA3F to 1/8" TRS cable, and a zippered carrying pouch.

- Lectrosonics LR with LT Kit **PRO'S CHOICE!** \$75.00
- Lectrosonics LR with LMB Kit **PRO'S CHOICE!** \$90.00



- Evolution Wireless LAV \$45.00
- Evolution Wireless Handheld Mic \$50.00
- ME66 Shotgun Mic \$25.00
- MKE400 Shotgun Mic \$20.00
- MKE600 Shotgun Mic \$25.00



- K-Tek Carbon Fiber Boom Pole \$30.00
- K-Tek Shock Mount \$10.00
- XLR-25' Cord \$5.00

- NTG-2 Shotgun Mic \$25.00
- Videomic Pro Shotgun Mic \$20.00
- Stereo Videomic Pro \$25.00



Zoom H6 Handy Recorder **\$50.00**

A portable handheld recorder and USB audio interface that features an interchangeable microphone system.

- Mic Accessories for H6 \$10.00



Tascam DR680 Recorder **\$75.00**

A professional-quality portable field recorder that allows you to record and edit multiple tracks of audio, ideal for musicians, filmmakers, journalists, and more. The DR-680 allows you to record up to 8 tracks onto widely-available SD/SDHC flash memory cards at rates up to 24-bit/96kHz.



Shure FP33 Mixer **\$50.00**

A field mixer rugged enough to handle the elements and flexible enough for professional working environments. It is suitable for electronic news gathering (ENG), field production (EFP), film, television and recording for sound design.



Samson P. A. System

- XP308i PA System \$60.00
- XP510i PA System \$75.00

PRICES SUBJECT TO CHANGE WITHOUT NOTICE.
ALL PRICES ARE PER DAY, UNLESS OTHERWISE INDICATED.

EXPOSURE METERS



KFM1100 Light Meter

\$15.00

For most people the minimal, clearly marked buttons will make using the meter second nature in very little time. The side of the meter only has 3 buttons, the largest is for taking measurements, the other two set on a rocker are UP/DOWN input buttons for changing F no., shutter speed or ASA/ISO. This simple, easy-to-use ergonomic design feels comfortable in your hand and its logical control layout will please photographers who want to concentrate on the subject, not their equipment.



KFM2100 Light Meter

\$25.00

The KFM-2100 will read ambient and flash light. For flash, the meter has settings for both cord and non-cord triggering. An integrated spot meter makes spot readings in both ambient and flash modes fast and easy with no need to stop and add accessories.



KONICA MINOLTA

Minolta Color Meter IIIF

\$20.00

Takes ambient and flash (cord/non-cord) readings, has an analyze function to subtract ambient light, and measures for Daylight, Tungsten A, or Tungsten B films. Users can store up to 9 personal correction values.



Samy's Camera **PRO RENTAL STAFF** will be happy to **CUSTOMIZE** rental packages upon request.

For long term rentals please inquire about **PACKAGE DISCOUNTS!**

PRICES SUBJECT TO CHANGE WITHOUT NOTICE.
ALL PRICES ARE PER DAY, UNLESS OTHERWISE INDICATED.

EXPOSURE METERS

SEKONIC®

Flashmeter L-358

\$16.00


Revolutionary new meter with features like: simultaneous reading of flash and ambient, unlimited number of cumulative flash exposures, nine memory banks, allweather design and complete range of cine frame speeds from 2 to 360 fps.

Zoom Master L-508 / L508C (Cine-unit)

\$20.00


This meter has all of the features of the original 508 (without EV read out) and also includes special motion picture and video functions. The 508-C (cine unit) can read Foot Candles, Foot Lamberts and LUX. Cine version can be programmed for shutter angle and has an electronic lock for frame rates from 2 to 360 fps.

Super Zoom Master L-608 / L608C (Cine-unit)

\$25.00

Ambient/flash exposure meter. Memory, brightness difference, auto illumination extended cine scale, 1°-4° zoom spot, 2 ISO settings, illuminated viewfinder and Pocket Wizard transmitter included.



Sekonic Prodigy Color C-500R

\$35.00

PRODIGI COLOR C-500 and C-500R, Sekonic gives photographers the world's only photographic color meter designed to read spectral sensitivity of both color film and CCD and CMOS sensors used in today's digital still and DV cine cameras.

PRICES SUBJECT TO CHANGE WITHOUT NOTICE.
ALL PRICES ARE PER DAY, UNLESS OTHERWISE INDICATED.

bogen

TRIPODS & HEADS

- Large tripod \$25.00
- Medium tripod \$18.00 - \$20.00
- Small tripod \$15.00
- Monopod \$8.00
- Dolly Wheels..... \$15.00 - \$25.00

- Large tripod \$35.00
- Medium tripod \$25.00
- Small tripod \$20.00
- Large Monopod \$8.00
- Medium Monopod..... \$5.00
- Large Side Arm \$12.00
- Small Side Arm \$10.00

Special Heads

- Monoball with quick release plate \$10.00
- Gitzo Fluid Head \$15.00

VIDEO TRIPODS & HEADS

CARTONI
PROFESSIONAL CAMERA SUPPORT

**sachtler**

Cartoni F102 Focus Aluminum Tripod System

consists of: F100 Focus Fluid Head, A500 Camera Mounting Plate, B464 Telescoping Pan Arm, A304 2-Stage Ultra-Light Tripod, P730 Mid-Level Spreader, and B410 Soft Carrying Case.

- F102 system..... \$50.00

Sachtler is a worldwide market leader of premium camera support systems for broadcast and cinematography production.

- System 20 (max-weight 61 lbs) \$125.00
- FSB6T System (max-weight 17.6 lbs) \$50.00
- DV-4 (max-weight 13.2 lbs)..... \$50.00

PRICES SUBJECT TO CHANGE WITHOUT NOTICE.
ALL PRICES ARE PER DAY, UNLESS OTHERWISE INDICATED.



FLUID HEADS



- 501 HD \$15.00
- 502 HD \$20.00
- 504 HD \$25.00
- 509 HD \$50.00

Video Legs

- 546 legs \$25.00
- 536 carbon fiber legs \$50.00



1030B Fluid Head

CALL

Supports up to 39 lbs, accepts large QR plate.



1030D Fluid Head

CALL

Ultimate 1030D Fluid Head for cameras up to 30 lbs.



1030DS Fluid Head

CALL

Ultimate 1030D Fluid Head for cameras up to 41 lbs.

2060HD Fluid Head

CALL

Ultimate 1030D Fluid Head for cameras up to 83 lbs.

Cine HD Legs

CALL

Maximum rigidity for head and camera loads up to 309 lbs



DOLLYS



Doorway Dolly Round-D-Round

\$150.00

Designed with a wheel base of 28.25" without an extended axle. Overall length reaches 51" with a platform size of 27.5" x 41.5". The two side boards add 10" each. Ground clearance is 9" or 3" when inverted. Load capacity is 800 lb.



Dana Dolly Uni Kit

\$100.00

Easy to set up, can be used with a variety of track options, and can be supported using standard junior stands, apple boxes, or the ground, whatever the shot requires.

Speedrail

\$1.00 per foot

PRICES SUBJECT TO CHANGE WITHOUT NOTICE.
ALL PRICES ARE PER DAY, UNLESS OTHERWISE INDICATED.



LIGHT MOUNTING ACCESSORIES

- Stand Adapters \$3.00
- Baby sidearm \$3.00
- Junior sidearm \$3.00
- Wall plates \$2.00
- Spud adapter \$1.00
- Magic arm \$5.00
- 2-1/2" grip head for matth clamp \$2.00
- Swivel U hook for seamless \$2.00
- Lowel pole (telescoping stand extension/crossbar)..... \$2.00
- Auto-Pole \$5.00
- Super clamp with stud \$5.00
- Super clamp with 6" extension arm (low arm)..... \$5.00
- Camera Mount \$2.00
- Super clamp with magic arm & camera mount \$10.00
- Flex-arm for super clamp \$2.00

STINGERS

Grip Accessories

- 25' AC Extension Cord \$5.00
- 50' AC Extension Cord \$7.00
- 100' AC Extension Cord \$9.00
- AC Twist Lock to 2x Splitter \$5.00
- AC Twist Lock to Edison \$5.00
- 3-Fer AC Adapter \$3.00

*All heavy duty extension cords will have an addl. \$2.00 charge

FOG & WIND MACHINES

Wind Machines

- Reel Efx II..... \$50.00

Fog Machines*

- Hazer EFX DF50..... \$100.00
- Rosco Vapour..... \$50.00

*Fog Machines do not come with fog fluid.
Regular and scented fluid available for purchase

PRICES SUBJECT TO CHANGE WITHOUT NOTICE.
ALL PRICES ARE PER DAY, UNLESS OTHERWISE INDICATED.



REFLECTORS, BACK DROPS & SCRIM JIMS



Westcott Reflectors

Westcott/Photoflex Litedisc folding cloth reflector, silver, gold, sun, white, black or silk



- 32" \$5.00
- 42" \$6.00
- 52" \$7.00
- 4' x 4' Silk \$15.00
- 6' x 6' Silk \$20.00
- Litedisc strong arm (holds disc to stand)..... \$3.00



Westcott Scrim Jim

Strong collapsible diffusion/reflector system.

Fabrics edged with velcro.

- 42" x 42" \$15.00
- 42" x 72" \$20.00
- 72" x 72" \$25.00

Kits with diffusion, silver/white & gold/white panels.

- 40" light tent \$20.00
- 60" light tent \$30.00



California Sunbounce

Kits include side & cross bars, case and 3 fabrics.

- 3' x 4' \$25.00
- 4' x 6' \$35.00
- 6' x 8' \$45.00



Sunwatter

Kits include side & cross bars, case and one fabric.

- 4' x 6' 35.00
- 6' x 8' 45.00

phot  tools



REFLECTORS, BACK DROPS & SCRIM JIMS

Phototools Fold Frame Reflector

\$20.00

43x67" panel reflector. Includes 4 rag set (silver/gold, black/white, silk & grid cloth) and cross bar.

- 8.5' monopod\$7.00

CHROMA-KEY

AVENGER

Avenger 12x12 Chroma-Key

- Digital Green \$50.00
- Green..... \$50.00
- Blue \$50.00

Samy's Camera **PRO RENTAL STAFF** will be happy to **CUSTOMIZE** rental packages upon request.

For long term rentals please inquire about **PACKAGE DISCOUNTS!**

GRIP BOOMS & STANDS



Booms and Stands

- Mini Boom \$10.00
- Super Boom \$25.00
- Mega Boom \$50.00

C Stands

- 20" Double Riser with grip head & single arm \$5.00
- 40" Double Riser with grip head & single arm..... \$5.00

Roller Stands

- Baby Roller Stand \$5.00
- Hi-Baby Roller Stand \$5.00
- Junior Roller Stand \$10.00
- Medium Roller Stand..... \$10.00
- Hi-Hi Roller Stand \$12.00

Flags / Silks

- Small 12" x 18" \$3.00
- Medium 18" x 24" \$4.00
- Large 24" x 36" \$4.00
- Large 30" x 36" \$4.00
- Extra Large 48" x 48" \$8.00

Nets / Scrims

- Small 12" x 18" \$3.00
- Medium 18" x 24" \$4.00
- Large 24" x 36" \$5.00
- Large 30" x 36" \$5.00
- Extra Large 48" x 48" \$8.00

Light Stands

- Backlight stand with telescoping pole \$3.00
- Regular stand, 8 1/2' \$3.00
- Tall stand, 12' \$4.00

PRICES SUBJECT TO CHANGE WITHOUT NOTICE.
ALL PRICES ARE PER DAY, UNLESS OTHERWISE INDICATED.

GRIP BOOMS & STANDS



AVENGER

Overhead Roller Stands

- Medium hi-roller stand 14' \$10.00
- High hi-roller stand 20' \$12.00
- Baby roller \$5.00
- Baby beefy \$5.00
- Baby beefy triple riser rocky mountain leg \$8.00
- Junior spud \$1.00

Counterweights

- Sandbag 15 lb \$2.00
- Sandbag 25 lb \$2.00
- Sandbag 35 lb \$2.00
- Shotbag 15 lb \$2.00
- Shotbag 25 lb \$2.00
- Flyaway sandbags \$2.00

Apple Boxes

- Full (8" x 12" x 20") \$4.00
- Half (4" x 12" x 20") \$4.00
- Quarter (2" x 12" x 20") \$4.00
- Pancake (1" x 12" x 20") \$4.00

Clamps

- A clamps - 1", 2", 3" (each) \$1.00
- C clamps \$3.00
- Bogen Super clamps \$5.00
- Matth clamps \$3.00
- Strobe mounting C clamp \$5.00



GRIP BOOMS & STANDS

Butterflies and Overheads

- 6' x 6' silk, solid, or single net \$15.00
- 6' x 6' frame only \$15.00
- 6' x 6' breakdown frame \$15.00
- 8' x 8' breakdown frame \$20.00
- 8' x 8' solid or silk \$20.00
- 8' x 8' net, single or double \$20.00
- 12' x 12' frame only, with 1 pair hangers \$18.00
- 12' x 12' silk, solid or griffolyn \$20.00
- 12' x 12' net, single or double \$20.00
- 20' x 20' deluxe two-stand frame only \$35.00
- 20' x 20' silk or solid \$50.00

Cutters

- Small 10" x 42" \$2.00
- Medium 18" x 48" \$3.00
- Large 24" x 60" / 24" x 72" \$4.00

Reflectors

- Matthboard 40" x 40" reflector, silver or gold \$10.00

Cucoloris (Wood)

- 18" x 24" \$6.00
- 24" x 36" \$8.00
- 48" x 48" \$12.00

HEAVY DUTY STANDS



- Hi Windup \$50.00
- SuperCrank Stand \$150.00
- B100SP \$75.00
- Crank O Vator \$150.00

PRICES SUBJECT TO CHANGE WITHOUT NOTICE.
ALL PRICES ARE PER DAY, UNLESS OTHERWISE INDICATED.

HONDA**Power****Equipment****HONDA PORTABLE GENERATORS****Honda EU1000****\$45.00**

- 1.8 HP, Single Cylinder,
- Overhead Valve, Air Cooled
- Displacement: 50 cc
- AC Output: 120V
- 1000W max.(8.3A)
- 900W rated (7.5A)
- Receptacles: 15A 125V Duplex
- NEMA Plug Number: 5-15P
- DC Output: 12V, 96W (8A)

**Honda EU2000i****\$55.00**

- 3.5 HP, Single Cylinder,
- Overhead Cam, Air Cooled
- Displacement: 98.5 cc
- AC Output: 120V
- 2000W max.(16.7A)
- 1600W rated (13.3A)
- Receptacles: 20A 125V Duplex
- NEMA Plug Number: 5-20P
- DC Output: 12V, 96W (8A)

NOTES:

- When using modeling lights, subtract 2.5 amps per 250 watt modeling lamp used from the generator's total capacity.
- HMI lights require crystal-sync generators to maintain flicker-free operation.
- Please call for additional information.

PRICES SUBJECT TO CHANGE WITHOUT NOTICE.
ALL PRICES ARE PER DAY, UNLESS OTHERWISE INDICATED.

HONDA**Power****Equipment****HONDA HEAVY DUTY GENERATORS****Honda ES6500 Crystal-Sync Generator****\$175.00**

- 12 HP with an electrical starter
- 6500 Watt/ 120V-240V/ 65 Amps
- Operates up to 5 hours on 4.2 gallons of gas
- Provides surge protection for use with HMI lighting and other electronics
- Dry weight: 284 lbs

Honda B11000**\$110.00**

- 20 HP 11,000 watt/120–240V/79 amps
- Operates up to four hours on 6-9 gal of gas (not include)
- Dry weight: 403 lbs

**Honda EM7000IS****\$125.00**

- 13 HP Single cylinder overhead valve
- Air-cooled
- Displacement: 389 cc
- AC Output: 120/240V
- 6500W max. (54.1/27.1A)
- 5500W rated (45.8/22.9A)

Receptacles: 20A 125V Duplex, NEMA Plug Number: 5-15P or 5-20P 30A 125V Locking Plug, NEMA Plug Number: L5-30P, 30A 125/250V Locking Plug NEMA Plug Number: L14-30P

MAGLINER®**MAGLINER CARTS****Magliner Carts****\$30.00****Magliner Beach Carts****\$45.00****Ruxxac Fold It Cart****\$15.00****INOVATIV CARTS****INOVATIV™****Scout 37****\$125.00**

The Scout, is an ultra lightweight compact cart specifically designed for the world traveler in mind. Works in almost any scenario.

**Echo 48****\$175.00**

With a rolled top shelf for less wrist fatigue and adding a low profile drawer, the Echo presents itself with a cleaner organized working space.

- Sidewinder Vega Mount..... \$40.00
- Baby Pin Mount..... \$25.00

PRICES SUBJECT TO CHANGE WITHOUT NOTICE.
ALL PRICES ARE PER DAY, UNLESS OTHERWISE INDICATED.

PRODUCTION SUPPLIES

Pop-Up Tents

- 10' x 10' \$35.00
- 10' x 15' \$40.00
- 10' x 20' \$50.00
- Sides \$5.00 (each)
- Pop-up sandbags (set of 4) \$10

Director Chairs

- Tall \$5.00
- Short \$5.00

Coolers

- Medium rolling \$10.00
- Large Rolling \$20.00
- Party / event / client cooler \$30.00

Styling

- Steamer \$15.00
- Wardrobe racks \$7.00
- Iron \$10.00
- Ironing board \$10.00
- 6' mirror \$10.00



PRICES SUBJECT TO CHANGE WITHOUT NOTICE.
ALL PRICES ARE PER DAY, UNLESS OTHERWISE INDICATED.

PRODUCTION SUPPLIES

Tables & Chairs

- 6' table \$10.00
- Folding chairs \$1.00
- Wood stool \$10.00
- Rolling stool..... \$10.00

Dollies & Carts

- Furniture dolly \$5.00
- C-Stand cart..... \$25.00
- Rolling cart \$10.00
- Rubbermaid cart..... \$10.00
- Dock carts \$15.00
- Sandbag cart \$25.00
- Folding chair cart..... \$5.00



Work Lights

- Battery-powered work lights \$10.00
- Work lights..... \$10.00



Ladders

- 2' \$5.00
- 4' \$5.00
- 6' \$5.00
- 8' \$10.00
- 10' \$10.00
- 12' \$10.00

REQUIREMENTS FOR RENTING

- ◆ IDENTIFICATION: Valid Driver's License or Passport (picture ID)
- ◆ COLLATERAL DEPOSITS: (a.) Credit Card deposit for the full replacement value of equipment, or (b.) Cash deposit for the full replacement value of equipment, or (c.) Certificate of Insurance (see certificate of insurance requirements.). (c.) A credit card is required to cover any deductible and to guarantee payment.
- ◆ ACCEPTED CREDIT CARDS: Visa, MasterCard, American Express or Discover Card. Note: We discourage the use of check cards or debit cards for collateral purposes.
- ◆ CHECKS: Samy's Camera does not accept checks for collateral deposits.
- ◆ INSURANCE: We require insurance on all orders valued over \$10,000.00 or credit card to cover deposit.
- ◆ CERTIFICATE OF INSURANCE REQUIREMENTS:
 - (a.) Samy's Camera must be named the Loss Payee, as well as additionally insured: (Use the 431 South Fairfax Avenue, Los Angeles, CA 90036 address).
 - (b.) General Liability Coverage must include, explicitly, miscellaneous rented equipment or rented equipment, as well as property covered off premises.
 - (c.) Policies with Unattended Vehicle Disclaimers will NOT be accepted.
 - (d.) All certificates and attached forms are subject to the verification and approval process by the management before the equipment is released. All certificates and attached forms need to be approved 24 hrs before rental pick-up.
 - (e.) A credit card is REQUIRED to cover any insurance deductible as well as to guarantee rental payment. (See Credit Card requirements listed above). Name on policy must match credit card. Insurance coverage must extend coverage a minimum of one week past the scheduled return dates. Insurance certificates from carriers outside the United States will not be accepted.

REQUIREMENTS FOR RENTING

- ◆ FEES: All prices in this catalog are per day. A weekend is charged as one day. A week is charged as three days, depending on equipment. Some equipment is based on a four day week. Monthly rates are available upon request. Prices are subject to change without notice.
- ◆ OUT OF TOWN RENTALS: When the equipment is shipped by Samy's, the minimum billing is two working days. Rentals are shipped with air freight prepaid by the customer on the day of their choice. The equipment is to be returned via prepaid air freight and must be marked for delivery to Samy's Camera. We are not responsible for delays caused by the carrier. In the event of such delays, the renter is still responsible for all transportation and rental charges. If it is critical that the equipment be received by a certain date, we suggest shipping at least 48 hours in advance. NOTE: All equipment is thoroughly tested and operated before shipment. Air handling can be very hard on equipment and totally out of our control. In the event of malfunction, the renter is still responsible for transportation, rental costs, and any damage.
- ◆ LOSS OR THEFT: Renters will be charged at the day rate on equipment that is lost or stolen until Samy's Camera is reimbursed for the replacement cost.
- ◆ SPARE LAMPS: There is no charge for spare lamps when available provided that burnt-out bulbs are returned. A charge will be made for missing lamps, broken lamps or filaments, or excessive burnouts.
- ◆ RESERVATIONS & CANCELLATIONS: Please call well in advance to reserve equipment for a future pickup. We cannot guarantee availability on short notice. Failure to cancel your order 24 hours prior to picking up will result in a full-days rental charge.

INSURANCE REQUIREMENTS

This Letter is to inform all clients that Samy's Camera requires either insurance, or a full credit card deposit, on all rental orders. Renters accept full responsibility for any loss, or repairs, due to damage while in the renter's possession. Insurance coverage is the responsibility of the renter. Proof of adequate insurance coverage for the full replacement value of the equipment will be required prior to the rental.

Insurance must name Samy's Camera as the **Loss Payee, as well as additionally insured.** Coverage must include; explicitly **Miscellaneous Rented Equipment, Rented Equipment, Rented Or Leased Equipment as well as property covered off premises.** The insurance certificate must also provide the total amount of coverage and the deductible on the policy. Policies with Unattended Vehicle Disclaimers will not be accepted. All insurance will be subject to verification and approval by Samy's management before any equipment is released. A credit card will be required to secure any deductible and rental fees for all clients without an in-house account. Name on policy must match credit card used to secure responsibilities.

Please contact your insurance agent for all of the required coverage by Samy's Camera. All certificates and forms need to be approved by Samy's management 24hrs prior to rental pick-ups, and can only be verified Monday through Friday 8am - 5pm PST. The verification process takes time, please plan accordingly. Insurance policies from outside the United States will not be accepted. All certificates must extend a minimum of one week past the scheduled return date.

This policy is in effect to protect you as well as Samy's Camera from any sizeable loss.

Thank you for your cooperation.

SAMY'S DV EDIT

WHEN BUYING MAKES SENSE

FOR EVERYTHING ARRI

ARRI 



OWN THE FUTURE TODAY,
THE EPIC-W 8K



RED
AUTHORIZED DEALER

CANON'S 4K POWERHOUSE



CINEMA EOS
C700

CINEMA EOS
C300 MARK II

CANON 18-80
CINE SERVO

CINEMA EOS

LEAVE NO STORY UNTOLD

Canon

SAMY'S WITH YOU
EVERY STEP OF THE WAY



SONY
4K

SAMYSDV.COM | 310.450.4365 | 12636 BEATRICE ST. LOS ANGELES, CA 90066

FOLLOW US @SAMYSDV



CinemaWorks

digital cinema rental, sales & supplies

DIG OUT YOUR OLD CINEMA GEAR

WE BUY USED EQUIPMENT - TRADE IN & TRADE UP

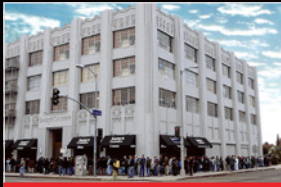


A DIVISION OF SAMY'S CAMERA
RENTAL & SALES

CINEMAWORKS.COM | 818.562.1960 | 148 S. VICTORY BLVD BURBANK, CA 91502

Samy's Camera

RENTAL LOCATIONS



LOS ANGELES

(323) 938-4400
rentals@samys.com
431 S. Fairfax Ave.



PLAYA VISTA

(310) 450-7062
pvrentals@samys.com
12636 Beatrice St.



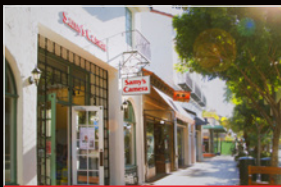
PASADENA

(626) 796-3300
pdrentals@samys.com
1759 E. Colorado Blvd.



SANTA ANA

(714) 557-9400
sarentals@samys.com
3309 S. Bristol St.



SANTA BARBARA

(805) 963-7269
s Brentals@samys.com
530 State St.



SAN FRANCISCO

(415) 621-7400
sfrentals@samys.com
1090 Bryant St.