

Samy's Camera

RENTAL CATALOG

EST. 1976



SAMYS.COM

LOS ANGELES • PLAYA VISTA • PASADENA
SANTA ANA • SANTA BARBARA • SAN FRANCISCO



EPIC-X RED DRAGON



*Now Available
for Rent!*

WITH THE 6K RED DRAGON® SENSOR, YOU CAN CAPTURE OVER 9X MORE PIXELS THAN HD. UNRIVALED DETAIL AND IMPRESSIVE NATIVE EXPOSURE ECLIPSE 35MM FILM IN BOTH LATITUDE AND IMAGE DENSITY. CAPTURE 6K IMAGES FROM 1-100 FPS AND TAKE ADVANTAGE OF AN ARSENAL OF FEATURES SUCH AS WIRELESS REMOTE CONTROL (VIA REDMOTE®), MODULAR DESIGN, AND EXPANDED DYNAMIC RANGE – WITHOUT THE BURDEN OF DEALING WITH A LARGE, BULKY SYSTEM.

RED
DRAGON

SAMY'S RENTAL LOCATIONS

Los Angeles

431 S. Fairfax Ave. , Los Angeles, CA 90036

Tel: 323-938-4400

Fax: 323-938-0947

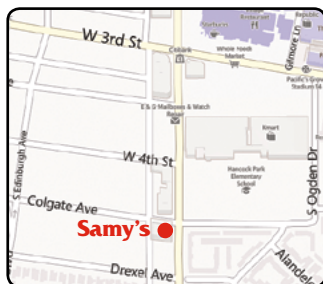
E-Mail: rentals@samys.com

Film & Rental Hours: Mon-Fri: 8am-6:30pm;

Sat: 9am-6pm; Sun: 11am-5pm

Store Hours: Mon-Fri: 9:30am-6:30pm;

Sat: 10am-6pm; Sun: 11am-5:00pm



Playa Vista

12636 Beatrice St. , Los Angeles, CA 90066

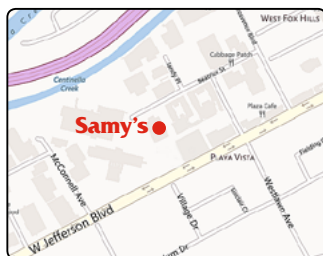
Tel: 310-450-7062

Fax: 310-450-3832

E-Mail: pvrentals@samys.com

Hours: Mon-Fri: 8am-6pm;

Sat: 9am-2pm; Sun: CLOSED



Pasadena

1759 E. Colorado Blvd., Pasadena, CA 91103

Tel: 626-796-3300

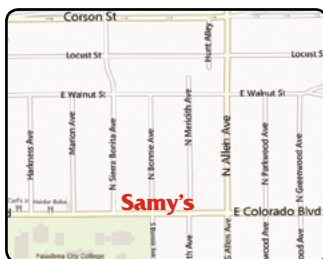
Fax: 626-432-6731

E-Mail: pdrentals@samys.com

Hours: Mon - Fri: 8am - 6pm;

Sat: 10am - 6pm; Sun: 11am - 5pm

Rental is CLOSED on Sunday.



samys.com

SAMY'S RENTAL LOCATIONS

Santa Ana

3309b S. Bristol St. , Santa Ana, Ca 92704

Tel: 714-557-9400

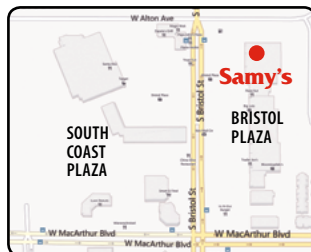
Fax: 714-708-2454

E-Mail: sarentals@samys.com

Hours: Mon-Fri: 9:30am-6:30pm;

Sat: 10am-6pm; Sun:10am-6:00pm

Rental is CLOSED on Sunday.



Santa Barbara

530 State St., Santa Barbara, CA 93101

Tel: 805-963-7269

Fax: 805-963-4100

E-Mail: sbrentals@samys.com

Film & Rental Hours: Mon-Fri: 9am-6pm;

Sat: 9:30am-3pm

Rental is CLOSED on Sunday.

Store Hours: Mon-Fri: 9am-6pm;

Sat: 9:30am-6pm; Sun:11am - 5pm



San Francisco

1090 Bryant St., San Francisco, CA 94103

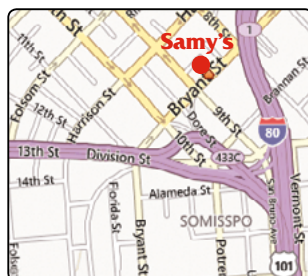
Tel: 415-621-7400

E-Mail: sfrentals@samys.com

Store Hours: Mon-Fri: 9am-6pm;

Sat: 9:30am-6pm; Sun:CLOSED

Rental is CLOSED on Sunday.



samys.com

RENTAL RATES

Daily Rates

Pick-up BEFORE 3 pm and return within 24 hours for 1 day rental charge.

Pick-up AFTER 3 p.m. and Rental begins next day. Return must be made before 11am next day.

(e.g. Pick-up Monday after 3pm, return Wednesday by 11am)

Weekly Rates

3 day week: Keep Rental for 7 consecutive days and pay for 3 days.

4 day week: Keep Rental for 7 consecutive days and pay for 4 days.

Weekend Rental: Pick-Up Rental after 3pm on Friday and Return Rental the following: Monday before 11am and pay for 1 Day Rental. Sunday pick-up anytime, return Tuesday by 11am pay 1 Day Rental.

**Samy's Camera
Pro Rental Staff
will be happy to
customize rental
packages upon request.
For long term rentals
please inquire
about package
discounts.**

ABOUT US

For Nearly 40 years Samy's Cameras has been the leader in high quality imaging products and the ultimate resource for both the professional and amateur photographers and videographers. Knowledgeable staff, exceptional customer service and an expansive inventory that is constantly being updated are many reasons that Samy's Camera has a loyal following.

Founded in 1976 the company has grown to 7 locations located throughout Southern California, with its flagship store located on Fairfax boulevard in the heart of Los Angeles. Each location is fully stocked with the latest and most exciting selections of photographic, video and electronic equipment available.

Samy's camera rentals stocks and supports a full range of still and motion cameras, lenses, lighting , stabilization and grip equipment. SCR is the west coast's "one-stop" destination for all your industry needs.

Our Mission and ultimate goal is provide the creative community with a rental source that provides a large inventory of the latest equipment as well as rental personnel that can help you with your equipment needs. Our gear goes through rigorous quality control testing and is maintained by only factory service providers. Our professional staff will be happy to help you with any questions you may have and we will do our best to work within your budget.

We look forward to working with you.

Samy's Camera Rental Staff

TABLE OF CONTENTS

LOCATIONS & RATES

SAMY'S RENTAL LOCATIONS	III
RENTAL RATES	V
ABOUT US	VI
TABLE OF CONTENTS	VII

DIGITAL CAMERAS, LENSES & FLASHES

CANON DIGITAL CAMERAS	1
CANON LENSES.....	4
CANON LENSES & FLASHES.....	5
ROKINON EF MOUNT LENSES.....	5
NIKON DIGITAL CAMERAS	6
NIKON AUTOFOCUS LENSES	9
NIKON MANUAL LENSES	11
NIKON FLASHES & ACCESSORIES	11
SIGMA LENSES.....	12
ZEISS LENSES (35MM SLR MOUNT)	12
ADAPTERS.....	13
LEICA CAMERAS.....	14
LEICA LENSES.....	15
SONY DIGITAL CAMERAS.....	16
SONY LENSES	16
ZEISS LENSES	16
PHASE ONE DIGITAL CAMERA BACKS.....	17

MEDIUM FORMAT

PHASE ONE LENSES.....	18
PENTAX MEDIUM FORMAT	18
HASSELBLAD DIGITAL CAMERA BACKS.....	19
HASSELBLAD CAMERAS	20
HASSELBLAD LENSES	21
MAMIYA CAMERAS.....	24
MAMIYA RZ LENSES	25
ALPA	26

COMPUTERS

APPLE MACINTOSH COMPUTERS.....	27
APPLE MACINTOSH DISPLAYS.....	28
EIZO DISPLAYS	28

TABLE OF CONTENTS

UNDERWATER

UNDERWATER HOUSINGS 29

UNDERWATER LIGHTS, STROBES & ACCESSORIES 30

CANON CINEMA EOS

CANON CINEMA EOS 31

HDSLR

ZACUTO Z-FINDER 32

PANASONIC MIRRORLESS CAMERAS 32

MICRO 4/3 LENSES 32

VIDEO

CANON CAMCORDERS 33

PANASONIC CAMCORDERS 35

GO PRO 35

SONY CAMCORDERS 36

SONY CAMCORDERS AND DECKS 37

CAMERA STABILIZATION 38

SUPPORT SYSTEMS

REDROCK MICRO 39

ARRI CAMERA SUPPORT SYSTEMS 41

GLIDECAM STABILIZERS 42

STEADICAM STABILIZERS 43

CAMERA SUPPORT SYSTEMS 44

VIDEO RECORDERS & TRANSFER

VIDEO RECORDERS 45

WIRELESS VIDEO TRANSFER 45

MONITORS 46

PROJECTORS

MULTIMEDIA PROJECTORS 47

CASIO PROJECTORS 47

TABLE OF CONTENTS

LIGHTING EQUIPMENT

PROFOTO POWER PACKS.....	48
PROFOTO POWER PACKS, RECEIVER & LIGHTS	49
PROFOTO STROBES & ACCESSORIES	50
PROFOTO POWER PACKS & STROBES	51
STROBES.....	52
BRONCOLOR STROBES.....	54
BRONCOLOR STROBE ACCESSORIES	55
DYNALITE STROBES.....	56
SPEEDOTRON STROBES.....	57
SPEEDOTRON STROBES & ACCESSORIES	58
SOFT LIGHTS.....	59
QUANTUM FLASHES AND SLAVES	60
MONOBLOCKS.....	61
TUNGSTEN AND HMI	61
HMI LIGHTING	62
BRIESE	64
KINOFLO LIGHT BANKS.....	65
PHOTOFLEX STARLIGHT OCTA KIT.....	65
TUNGSTEN HOT LIGHTS	66
LED LIGHTING	66
LIGHT BANKS.....	67
POCKET WIZARD REMOTE TRIGGERS	68
LED Go VIDEO LIGHTING.....	68
LITEPANELS.....	69
LED LIGHTS.....	70

**Samy's Camera
Pro Rental Staff
will be happy to
customize rental
packages upon
request.**

TABLE OF CONTENTS

SOUND EQUIPMENT

TELEPROMPTERS 70

SOUND BLIMPS 71

KENYON GYRO STABILIZERS 71

CENTURY VIDEO ADAPTERS 72

SLIDERS 72

MICROPHONES & RECORDERS 73

METERS

EXPOSURE METERS 74

TRIPODS & HEADS

TRIPODS AND HEADS 76

VIDEO TRIPODS AND HEADS..... 76

FLUID HEADS..... 76

VIDEO TRIPODS & HEADS 77

GRIP EQUIPMENT

DOLLYS..... 77

LIGHT MOUNTING ACCESSORIES..... 78

STINGERS 78

FOG & WIND MACHINES..... 78

REFLECTORS, BACK DROPS & SCRIM JIMS..... 79

CHROMA-KEY 79

GRIP BOOMS & STANDS..... 80

HONDA PORTABLE GENERATORS 84

HONDA HEAVY DUTY GENERATORS 85

MAGLINER CARTS..... 85

INOVATIV CARTS..... 85

RENTAL REQUIREMENTS

REQUIREMENTS FOR RENTING..... 86

INSURANCE REQUIREMENTS..... 88



CANON DIGITAL CAMERAS

Canon



EOS-1Dx

\$210.00

- Effective Megapixels: 18.1
- Full-Frame Sensor
- Up to 12 frames per sec
- EOS HD Video with manual exposure control and multiple frame rates
- ISO range of 100 - 51200 (up to 204800 in H2 mode)



EOS-1D C

\$300.00

- Effective Megapixels: 18.1
- Compact, Durable, Self-Contained 4k Video Recording
- 4K Motion JPEG YCbCr 4:2:2, 8-bit video recording
- 12 frames per second
- HDMI Output with Time Code
- Compatibility with EF Cinema and EF Lenses



EOS-1D Mark IV

\$125.00

- 16.1MP APS-H sized sensor
- 3.0" LCD
- Dual DIGIC 4 Image Processors
- 45-point AF system
- 10fps Burst Mode

EOS-1Ds Mark III

\$125.00

- 21MP full-frame sensor • 5 frames per second • 3" LCD



EOS-5D Mark III

\$95.00

- 22.3MP Full-Frame CMOS Sensor
- 3.2" Clear View High Resolution LCD
- DIGIC 5+ Image Processor
- 61-Point High Density AF
- Full HD 1080/30p and 720/60p Formats

All digital DSLR cameras include; 2 batteries,
1 charger, 1 video cable, 1 USB cable, software and manual.

PRICES SUBJECT TO CHANGE WITHOUT NOTICE.
ALL PRICES ARE PER DAY, UNLESS OTHERWISE INDICATED.

CANON DIGITAL CAMERAS

Canon



EOS-5D Mark II

\$85.00

- Effective Megapixels: 21
- Full-Frame Sensor
- 1080p HD video
- 3.9 frames per sec
- up to 78 consecutive shots (jpgs)
- ISO 100-6400 (expandable to L:50 H:12800)



EOS-5Ds

\$130.00

- Dual DIGIC 6 Image Processors
- 3.2" 1.04m-Dot ClearView II LCD Monitor
- Full HD 1080p Video Recording at 30 fps
- Time Lapse movie function which takes still photos at set intervals and combines them into a full HD movie
- EOS Scene Detection System with the 150,000-pixel RGB+IR metering sensor provides precise exposure and color metering



EOS-5Ds R

\$140.00

- 50.6MP Full-Frame CMOS Sensor
- Dual DIGIC 6 Image Processors
- Low-Pass Filter Effect Cancellation
- 3.2" 1.04m-Dot ClearView II LCD Monit



EOS-6D

\$65.00

- Effective Megapixels: 20.2
- Full-Frame Sensor
- EOS HD Video with manual exposure & multiple frame rates
- ISO setting 100-25600, Up to 4.5 fps
- New 11-point AF Continuous shooting
- Built-in Wi-Fi® transmitter

PRICES SUBJECT TO CHANGE WITHOUT NOTICE.
ALL PRICES ARE PER DAY, UNLESS OTHERWISE INDICATED.

CANON DIGITAL CAMERAS

Canon



7D Mark II

\$55.00

- 20.2MP APS-C CMOS Sensor
- Dual DIGIC 6 Image Processors
- 3.0" 1.04m-Dot Clear View II LCD Monitor
- Full HD 1080p/60 Video & Movie Servo AF
- Dual Pixel CMOS AF with Live View
- Native ISO 16000, Extended to ISO 51200
- 10 fps Shooting at Full Resolution
- Built-In GPS Receiver & Digital Compass



EOS-7D

\$45.00

- Effective Megapixels: 18
- APS-C sensor (1.6x)
- 1080p HD video
- 8 frames per sec
- ISO 100-6400 (expandable to L:50 H:12800)



EOS-60D

\$40.00

EOS-70D

\$50.00

- Effective Megapixels: 18
- APS-C sensor (1.6x)
- Storage-SD/SDHC/SDXC
- 1080p HD video
- 5.3 frames per sec
- ISO 100-6400 (expandable to L:50 H:12800)



Battery Grips

\$15.00

for EOS 5D Mark II and EOS 5D Mark III

Samy's Camera **PRO RENTAL STAFF** will be happy to **CUSTOMIZE** rental packages upon request.

For long term rentals please inquire about **PACKAGE DISCOUNTS!**

PRICES SUBJECT TO CHANGE WITHOUT NOTICE.
ALL PRICES ARE PER DAY, UNLESS OTHERWISE INDICATED.

Canon CANON LENSES

Wide Angle

- EF 14mm f/2.8L II USM \$40.00
- EF 15mm f/2.8 fish eye \$30.00
- EF 17mm f/4L UD TS-E \$55.00
- EF 20mm f/2.8 USM \$15.00
- EF 24mm f/1.4 L II USM \$40.00
- EF 24mm f/2.8 \$12.00
- EF 24mm f/3.5L TS-E \$40.00
- EF 28mm f/1.8 USM \$20.00
- EF 28mm f/2.8 \$12.00
- EF 35mm f/1.4 L USM \$40.00
- 35mm f/1.4 II \$45.00
- EF 35mm f/2.0 \$12.00
- EF 35mm f/2 IS USM \$40.00
- EF 40mm F2.8 STM \$15.00



Normal

- EF 45mm f/2.8 TS-E \$40.00
- EF 50mm f/1.2 L USM \$40.00
- EF 50mm f/1.4 USM \$16.00
- EF 50mm f/1.8 II \$10.00
- EF 50mm f/2.5 macro \$16.00
- EFS 60mm f/2.8 Macro \$16.00
- MP-E 65mm f/2.8 1.5x macro... \$40.00

Telephoto

- EF 85mm f/1.2L II USM \$40.00
- EF 85mm f/1.8 USM \$15.00
- EF 90mm f/2.8 TS-E \$40.00
- EF 100mm f/2.0 USM \$20.00
- EF 100mm f/2.8 macro \$20.00
- EF 100mm f/2.8L IS USM macro . \$25.00
- EF 135mm f/1.4 II \$45.00
- EF 135mm f/2.8 SF \$18.00
- EF 135mm f/2.0L USM \$30.00
- EF 180mm f/3.5 Macro L \$24.00
- EF 200mm f/1.8L USM \$75.00
- EF 200mm f/2.0 L IS USM..... \$100.00
- EF 200mm f/2.8 II USM..... \$25.00
- EF 300mm f/2.8L IS II USM. \$100.00
- EF 300mm f/2.8L IS USM..... \$55.00
- EF 300mm f/4.0L IS USM..... \$22.00
- EF 400mm f/2.8L II USM \$200.00
- EF 400mm f/2.8L IS USM..... \$100.00
- EF 400mm f/5.6L USM \$22.00
- EF 500mm f/4.0L IS II USM.. \$150.00
- EF 500mm f/4.0L \$100.00
- EF 600mm f/4.0L USM \$100.00
- EF 600mm f/4.0L IS USM..... \$150.00
- EF 800mm f/5.6 IS USM..... \$275.00

Tilt-Shift

- 17mm F4.0 L TS-E \$55.00
- 24mm F3.5L TS-E \$50.00
- 45mm F2.8 TS-E \$40.00
- 90mm F2.8 T-SE \$40.00



Specialty

- Lens Baby - Composer \$20.00

PRICES SUBJECT TO CHANGE WITHOUT NOTICE.
ALL PRICES ARE PER DAY, UNLESS OTHERWISE INDICATED.



CANON LENSES & FLASHES

Zoom Lenses

- EF-S 8-15mm f/4L fisheye\$45.00
- EF-S 10-22mm f/3.5-4.5\$28.00
- EF 11-24mm F4L USM\$55.00
- EF 16-35mm f/2.8L USM\$35.00
- EF 16-35mm f/2.8 II USM\$40.00
- EF 17-55mm f/2.8L EFS\$35.00
- EF-S 17-85MM f4-5.6 IS\$30.00
- EF 17-40mm f/4L\$25.00
- EF 24-70mm f/2.8L USM\$35.00
- EF 24-70mm f/2.8 II USM\$40.00
- EF 24-70mm f/4 IS\$30.00
- EF 24-105mm f/4 L USM\$35.00
- EF 28-105mm f/3.5-4.5 USM\$20.00
- EF 28-135mm f/3.5-5.6 IS\$20.00
- EF 28-200mm f/3.5-5.6\$30.00
- EF 28-300mm f/3.5-5.6 IS\$35.00
- EF 35-135mm f/4.0-5.6\$18.00
- EF 35-350mm f/3.5-5.6L\$35.00
- EF 70-200mm f/2.8L IS\$35.00
- EF 70-200mm f/2.8L IS II\$40.00
- EF 70-200mm f/4.0L IS\$25.00
- EF 70-210mm f/3.5-4.5\$18.00
- EF 70-300mm f/4-5.6 IS\$35.00
- EF 70-300mm F4-5.6L\$35.00
- EF 75-300mm f/4.5-5.6 DO IS\$25.00
- EF 100-400mm f/4.5-5.6L IS\$35.00
- EF 200-400mm f/4L IS 1.4 EXT ...\$225.00

Canon Flashes

& EOS Accessories

- 600 EX RT \$30.00
- 580EX II \$25.00
- Macro Ring-light MR-14EX \$20.00
- Power Drive Booster PB-E2 \$15.00
- Off Shoe Camera Adapter \$10.00
- EF Extender 1.4X \$12.00
- EF Extender 2.0X II \$12.00
- Life-size Converter \$12.00
- Remote TC80N3 \$15.00
- Gary Fong Lightsphere \$10.00



ROKINON EF MOUNT LENSES



- 14mm T3.1 DS\$30.00
- 24mm T1.8 DS\$30.00
- 35mm T1.5 DS\$30.00
- 50mm T1.5 DS\$30.00
- 85mm T1.5 DS\$30.00

PRICES SUBJECT TO CHANGE WITHOUT NOTICE.
ALL PRICES ARE PER DAY, UNLESS OTHERWISE INDICATED.



NIKON DIGITAL CAMERAS



Nikon D4s

\$200.00

- Extended standard ISO range (100-25,600) with enhanced noise reduction, and improved tonal range
- Shoot 11 fps for approx. 200 shots at full resolution
- 16.2MP FX-format CMOS image sensor is paired with Nikon's new image-processing engine, EXPEED 4, for truly phenomenal speed and performance in the field
- Live View, RAW SIZE S setting for shooting 12-bit uncompressed



Nikon D4

\$150.00

- 16.2 MP FX-format CMOS sensor
- 10 fps continuous shooting
- ISO expanded to 204,800
- 1080p video at 30p with stereo sound
- improved 51 point AF System, ISO expanded to 204,800



Nikon D3X

\$150.00

- Effective Megapixels: 24.5
- Full-Frame Sensor
- 5-7 frames per sec
- up to 130 consecutive shots (jpgs)
- ISO 100-1600 (expandable to L:50 H:6400)

Nikon D3S

\$125.00

Nikon D5300

\$40.00

Nikon D5100

\$35.00

All digital DSLR cameras include; 2 batteries, 1 charger, 1 video cable, 1 USB cable, software and manual.

PRICES SUBJECT TO CHANGE WITHOUT NOTICE.
ALL PRICES ARE PER DAY, UNLESS OTHERWISE INDICATED.



NIKON DIGITAL CAMERAS



Nikon D610

\$65.00

- EXPEED 3 Image Processor
- Full HD 1080p Video Recording at 30 fps
- Continuous Shooting up to 6 fps
- Expandable Sensitivity to ISO 25600
- External Mic and Headphone Inputs

Nikon D700

\$80.00



Nikon D810

\$115.00

- All-new FX-format full-frame image sensor design
- No optical low-pass filter
- Flawless detail retention from snow white to pitch black
- Noise-free images from ISO 64 to ISO 12,800
- Extremely wide dynamic range
- Flattering well-saturated skin tones



Nikon D800

\$85.00

- Effective Megapixels: 36.3
- FX-format CMOS sensor
- Full HD 1080p video at 30/25/24p with stereo sound
- ISO range of 100-6400, expandable to 25,600
- 4 fps burst rate

Battery Grips for D800

\$15.00



Nikon D800E

\$90.00

- Optimized for NEF Raw File Capture
- Modified OLP Filter for High Resolution
- 36.3Mp CMOS FX Format Sensor
- EXPEED 3 Image-Processing Engine
- Eye-Level Pentaprism Viewfinder
- 1920 x 1080/30/25/24p HD Video Capture



Nikon DF

\$80.00

- Effective Megapixels: 16.2
- FX-format D-SLR with a unique mechanical operation system
- 5.5 FPS Continuous Shooting
- 100-12800 ISO, Expandable to 204800
- Wi-Fi with optional Wu-1a

All digital DSLR cameras include; 2 batteries, 1 charger,
1 video cable, 1 USB cable, software and manual.

PRICES SUBJECT TO CHANGE WITHOUT NOTICE.
ALL PRICES ARE PER DAY, UNLESS OTHERWISE INDICATED.



NIKON DIGITAL CAMERAS



Nikon D750

\$85.00

- Effective Megapixels: 24.3
- Full-Frame
- 6.5 FPS Continuous Shooting
- 100 -12,800 ISO Expandable to 51,200
- Full HD 1080p at 60/50/30/25/24p
- Built-in Wi-Fi



Nikon D600

\$60.00

- 5.5 fps continuous shooting
- Crystal clear images from
- ISO 100 to 6400
- 1080p HD videos with selectable frame rates of 30p, 25p or 24p and MPEG-4 AVC/H.264 compression
- Wi-Fi camera control and mobile



Nikon D7000

\$45.00

- Effective Megapixels: 16.2
- 1.5x Sensor
- 1080p Video
- 6 FPS Continuous Shooting
- ISO 200-3200 (expandable to L:100 H:6400)
- Full HD 1080p Movies



Nikon D7100

\$50.00

- Effective Megapixels: 16.2
- 1.5x Sensor
- 1080p Video
- 6 FPS Continuous Shooting
- ISO 200-3200 (expandable to L:100 H:6400)
- Full HD 1080p Movies



Nikon D7200

\$55.00

- 4.2MP DX-Format CMOS Sensor
- No Optical Low-Pass Filter
- 3.2" 1,229k-Dot LCD Monitor
- 6 FPS Continuous Shooting
- 100-25600 ISO Expandable to 102400 in B&W

All digital DSLR cameras include; 2 batteries, 1 charger, 1 video cable, 1 USB cable, software and manual.

PRICES SUBJECT TO CHANGE WITHOUT NOTICE.
ALL PRICES ARE PER DAY, UNLESS OTHERWISE INDICATED.

NIKON AUTOFOCUS LENSES



Wide Angle

- 14mm f/2.8D ED AF \$35.00
- 16mm f/2.8 AF-D fisheye \$25.00
- 18mm f/2.8 AF-D \$20.00
- 20mm f/2.8 AF-D..... \$15.00
- 24 mm f/1.4G ED AF-S N \$40.00
- 24mm f/2.8 AF-D..... \$12.00
- 24mm f/3.5 PC-E \$50.00
- 28mm aspheric f/1.4 AF-D \$30.00
- 28mm f/2.8 AF-D \$15.00
- 35 mm f/1.4G AF-S \$40.00
- 35mm f/2.0 AF-D \$15.00



Normal

- 50mm f/1.4 G-AFS \$16.00
- 50mm f/1.8 AIS \$10.00
- 58mm AFS 1.4G..... \$40.00
- 60mm f/2.8 micro AIS \$18.00

Telephoto

- 85 mm f/1.4G AF-S N \$40.00
- 85mm f/1.4 AF-D \$25.00
- 85mm f/1.8 AF..... \$18.00
- 85mm f/1.8 G AFS..... \$18.00
- 105mm f/2.8G ED-IF AF-S VR Micro..... \$25.00
- 105mm f/2.8 micro..... \$20.00
- 105mm f/2.0 DC AF-D \$25.00
- 135mm f/2.0 DC AF \$18.00
- 180mm f/2.8 ED-IF AF-D \$18.00
- 200mm f/2.0 G ED-IF AF-S VR..... \$80.00
- 200mm f/4.0 D Micro-Nikkor \$22.00
- 300mm f/2.8 ED-IF AF-D \$45.00
- 300mm f/2.8 ED-IF AFS..... \$55.00
- 300mm f/4.0 ED-IF AF-D \$28.00
- 300mm f/2.8G ED VR II..... \$115.00
- 400mm f/2.8 ED-IF D AF-1 \$100.00
- 600mm f/4.0 ED-IF D AF-S1 \$150.00



PRICES SUBJECT TO CHANGE WITHOUT NOTICE.
ALL PRICES ARE PER DAY, UNLESS OTHERWISE INDICATED.

NIKON AUTOFOCUS LENSES



Zoom

- 16–35 mm f/4G ED AF-S VR N..... \$30.00
- 14-24mm f/2.8 AFS..... \$35.00
- 17-35mm f/2.8 AF-D/AFS \$30.00
- 20-35mm f/2.8 AF-D \$25.00
- 24-70mm f/2.8 G \$35.00
- 24-70mm f/2.8E ED VR..... \$40.00
- 24-70mm f/2.8E ED VR N \$45.00
- 24-120mm f/3.5-5.6 D IF \$18.00
- 24-120mm f/4 AFS VR \$35.00
- 28-70mm f/3.5-4.5 AF-D \$18.00
- 28-70mm f/2.8 AF-D/AFS..... \$30.00
- 28-85mm f/3.5-4.5 AF AIS \$18.00
- 28-105mm f/3.5-4.5 AF D \$18.00
- 28–300mm f/3.5-5.6G ED AF-S VR.. \$30.00
- 28-200mm f/3.5-5.6 D IF \$20.00
- 35-70mm f/2.8 AF-D AIS \$20.00
- 35-105mm f/3.5-4.5 IF AF-D \$18.00
- 35-135mm f/3.5-4.5 AF AIS..... \$18.00
- 70–200 mm f/2.8G ED AF-S VR II ... \$40.00
- 70-200mm f/2.8 VR..... \$35.00
- 75-300mm f/3.5-4.5 AF AIS \$22.00
- 80-200mm f/2.8 ED AF-D \$25.00
- 80-200mm f/2.8 ED AF-D/AFS \$30.00
- 80-400mm f/4.0 AFD VR..... \$40.00
- 200-400mm f/4G ED VR II..... \$100.00

Digital Lenses

- 10-17mm AF-S DX..... \$20.00
- 17-55mm AF-S DX..... \$30.00
- 18-200 AF-S DX VR..... \$25.00
- 18-105 AF-S DX VR..... \$20.00
- 12-24 f/4.0 G/AFS Dx..... \$35.00
- 17-55mm f/2.8 AF-D/AFS Dx ... \$30.00

Macro Lenses

- 60mm f/2.8 micro AIS \$18.00
- 60 mm f/2.8D AF-S G \$20.00
- 85 mm f/2.8D PC-E Micro \$35.00
- 105mm f/2.8G ED-IF AF-S VR \$25.00
- 105 mm f/2.8D AF..... \$18.00
- 200 mm f/4.0 \$45.00

Perspective Control

(PC) Lenses

- 24mm f/3.5 PC-E Nikkor \$50.00
- 45 mm f/2.8D ED PC-E \$50.00
- 85 mm f/2.8D PC-E Micro \$50.00

NIKON MANUAL LENSES



Wide Angle

- 8mm f/2.8 Fisheye, PL Mount..... CALL
- 8mm f/2.8 fisheye \$75.00
- 15mm f/3.5 AIS \$40.00
- 16mm f/2.8 fisheye \$30.00
- 18mm f/3.5 AIS \$40.00
- 20mm f/2.8 \$25.00
- 24mm f/2.0 AIS \$25.00
- 28mm f/2.0 AIS \$25.00
- 28mm f/3.5 PC \$30.00
- 35mm f/1.4 AIS \$30.00
- 35mm f/2.8 PC \$30.00

Normal

- 50mm f/1.4 \$25.00
- 50mm f/1.8 \$20.00
- 58mm f/1.2 Noct. AIS \$30.00

Macro Lenses and

Close-Up Equipment

- 60mm f/2.8 micro-AF-D..... \$15.00

Telephoto

- 85mm f/1.4 AIS \$30.00
- 85mm f/2.8 PC/TS \$35.00
- 105mm f/1.8 AIS \$30.00
- 105mm f/2.5 AIS \$24.00
- 200mm f/2.0 ED AIS \$45.00
- 300mm f/2.8 ED AIS \$45.00
- 400mm f/2.8 ED AIS \$75.00
- 400mm f/3.5 ED AIS \$50.00
- 500mm f/4.0 ED AIS \$70.00
- 500mm f/8.0 mirror reflex \$20.00
- 600mm f/5.6 ED AIS \$80.00
- 800mm f/5.6 ED AIS \$75.00
- Tokina 11-16mm f/2.8 \$30.00
- Zeiss 18mm f/3.5 \$50.00

Nikon Teleconverters

- TC-14E for AF / AIS lenses only ... \$15.00
- TC-20E for AF / AIS lenses only ... \$15.00
- TC-14E II (1.4x) CALL
- TC-17E II (1.7x) CALL
- TC-20E III (2.0x)..... CALL
(AF not possible with 500 / 600mm
AF-S with the TC-20E)

Specialty Lens

- Lens Baby - Composer..... \$20.00

NIKON FLASHES & ACCESSORIES

Nikon Speedlites

- SB-800 \$20.00
- SB-900 \$25.00
- SB-910 \$30.00
- SC-29 \$7.00

Nikon Speedlite Modifier

- Gary Fong lightsphere \$10.00



PRICES SUBJECT TO CHANGE WITHOUT NOTICE.
ALL PRICES ARE PER DAY, UNLESS OTHERWISE INDICATED.

SIGMA

SIGMA LENSES



- 10-20mm f3.5 DC\$25.00
- 24mm F1.4 ART OG HSM (EF Mount).....\$40.00
- 35mm F1.4 ART DG HSM (EF Mount)\$40.00
- 50mm F1.4 ART DG HSM (EF Mount)\$40.00
- 18-135mm F1.8 DG HSM (EF Mount)\$35.00
- 24-105mm F4.0 DG OS (EF Mount).....\$35.00
- 120-300mm F2.8 APO OS (EF Mount)\$75.00
- 150-600mm F5-6.3 Contemporary.....\$40.00
- 150-600mm F5-6.3 Sport
(EF & Nikon Mounts).....\$60.00



ZEISS LENSES (35MM SLR MOUNT)

Canon Mount

- 15mm F2.8.....\$60.00
- 18mm F/3.5\$50.00
- 21mm F/2.8\$50.00
- 25mm F/2.0.....\$50.00
- 28mm F/2.0\$50.00
- 35mm F/2.0.....\$50.00
- 50mm F/1.4\$50.00
- 50mm F/2.0 Milvus..... CALL
- 50mm macro F/2.0\$50.00
- 55mm F1.4 Otus.....\$60.00
- 85mm F/ 1.4\$50.00
- 85mm F1.4 Otus.....\$60.00
- 85mm F1.4 Milvus..... CALL
- 100mm macro F2.0\$50.00

Nikon Mount

- 8mm f/2.8 Fisheye
PL Mount..... CALL
- 18mm F3.5.....\$50.00
- 21mm F2.8.....\$50.00
- 28mm F2.0.....\$50.00
- 35mm F2.0\$50.00
- 50mm F1.4.....\$50.00
- 50mm F2.0 Milvus..... CALL
- 50mm macro F2.0\$50.00
- 85mm F1.4.....\$50.00
- 100mm macro F2.0.....\$50.00

Zeiss Compact Prime Lenses

- 15.5-45mm T2.6 LWZ.2
- 15mm T2.9 CP.2
- 18mm f3.6 C-prime
- 21mm f2.9 C-prime
- 25mm f2.9 C-prime
- 35mm f2.1 C-prime



CALL FOR PRICE

- 50mm f1.5 C-prime
- 50mm f2.1 C-prime
- 85mm f1.5 C-prime
- 85mm f2.1 C-prime

Tokina

- 11-20mm f2.8 DX..... \$25.00
- 11mm-20mm f/2.8..... \$25.00
- 10mm-17mm f/3.5-f4.5 \$30.00
- 11mm-16mm f/2.8..... \$30.00
- 16mm-28mm f/2.8..... \$35.00

PRICES SUBJECT TO CHANGE WITHOUT NOTICE.
ALL PRICES ARE PER DAY, UNLESS OTHERWISE INDICATED.

N

NOVOFLEX



ADAPTERS

NOVOFLEX offers many adapters to connect lenses and cameras with different bayonets. With all adapters and/or adapter combinations infinity adjustment of the lens is possible. None of the adapters will transfer functions from the camera body to the lens. For all modern cameras we recommend the use of the stop-down metering / aperture priority. All adapters are manufactured high-precisely and intentionally without any optical elements.

metabones



Attaches a Canon EF or Nikon G lens to a Sony NEX camera. It is referred to as a "Smart Adapter" because it retains electronic communication between the camera and lens and therefore provides automatic aperture control, EXIF data, image stabilization and autofocus. The adapter is powered by the camera body, so no external power source is required.

Metabones Adapters

- NEX - EF Mount\$30.00
- E - EF Speedbooster\$50.00
- E - EF Mark IV Mount\$30.00
- Micro 4/3 - EF Mount\$30.00
- Micro 4/3 - EF Speedbooster\$50.00
- E - Nikon G Mount\$30.00

LEICA CAMERAS

Leica



M9 (BODY ONLY)

\$175.00

The smallest full-format digital system camera the world has ever seen. The combination of an extremely high-resolution image sensor, the superior performance of M lenses, and sophisticated processing of the captured digital information ensures the best imaging results in all photographic situations. The 18-megapixel CCD image sensor, specifically designed and developed for this camera, enables the capture of the full 35-mm film format without any compromises. Compact with intuitive handling and simple menu navigation.



M7 Rangefinder (BODY ONLY)

\$50.00

Stepless auto shutter speed control with metered value storage. Cloth focal plane shutter controls exposure times electronically. Stay informed at all times: Unique LED integrated in the viewfinder. An on/off switch is positioned ergonomically right next to the release button. Flash at sync speeds up to 1/1000 sec in conjunction with special Metz flash units. Use flash creatively: Flash unit can also be triggered by the second curtain shutter. Prevent faulty exposures: DX coding & override feature in the auto-exposure mode.



M6 / M6 TTL Rangefinder (BODY ONLY) \$40.00

The LEICA M6 has a combined rangefinder and viewfinder with brightline frames. It has mechanically controlled shutter and selective through the lens exposure metering. Subject cropping is controlled through the view finder. Viewfinder magnification is the same for all lenses. The M6 has shutter speeds from 1 sec. to 1/1000 sec. and "B", parallax compensation and delineates the subject area covered by the corresponding lens. The difference between fields covered by the viewfinder and by the respective lens is corrected automatically.

PRICES SUBJECT TO CHANGE WITHOUT NOTICE.
ALL PRICES ARE PER DAY, UNLESS OTHERWISE INDICATED.

LEICA LENSES

Leica



M Series Lenses

LEICA M lenses are hand-assembled with meticulous care and with their wide apertures, ambient light can be used to its best advantage. Excellent sharpness, extraordinarily high contrast performance and strictly neutral color rendition are their outstanding characteristics.

In cramped quarters, five wide-angle lenses with focal lengths ranging from 21 to 35 mm provide an overview, space and dynamics. Four lenses with different maximum apertures are available with the standard focal length of 50mm, among them the light-giant NOCITLUX-M and the compact collapsible ELMAR-M. To compress the depth of space and to exclude distracting surroundings, four lenses with long focal length ranging from 75 to 135 mm define the upper range of LEICA M lenses



M7 / M6 / M6TTL

- Elmarit-M 21mm f/2.8 ASPH..... CALL
- Elmarit-M 24mm f/2.8 ASPH..... CALL
- Elmarit-M 28mm f/2.8 CALL
- Summilux-M 35mm f/1.4 ASPH. CALL
- Summicron 35mm f/2 ASPH..... CALL
- Summilux-M 50mm f/1.4 CALL
- Summicron-M 50mm f/2 CALL
- Elmar-M 50mm f/2.8..... CALL
- Apo-Summicron-M 90mm f/2 ASPH. CALL
- Elmarit-M 90mm f/2.8 CALL

SONY
make.believe

SONY DIGITAL CAMERAS

α7s II 4K



SONY A7II Body

\$65.00

SONY A7s II Body

\$125.00

- 42MP Full-Frame Exmor R BSI CMOS Sensor
- 4K movie recording featuring full pixel readout without pixel binning
- 5-axis optical image stabilization
- 409600 ISO

SONY A7s Body

\$80.00

α7R II 4K



SONY A7R II Body

\$125.00

- 42MP Full-Frame Exmor R BSI CMOS Sensor
- BIONZ X Image Processor
- Internal UHD 4K Video & S-Log2 Gamma
- 5-Axis SteadyShot INSIDE Stabilization
- 14-bit uncompressed RAW format
- 102400 ISO

SONY A7R Body

\$80.00

SONY LENSES



- | | |
|---------------------------------|-----------------------------------|
| • 16mm F2.8..... \$30.00 | • 18-200mm..... \$40.00 |
| • 28mm f2 FE \$25.00 | • 24-70mm F4.0 FE \$25.00 |
| • 35mm f1.4 FE ZEISS.. \$35.00 | • 24-240mm f3.5-6.3 \$20.00 |
| • 35mm f2.8 FE \$30.00 | • 28-70mm f3.5-5.6 \$15.00 |
| • 55mm F1.8..... \$30.00 | • 70-200mm F4.0 FE..... \$35.00 |
| • 90mm f2.8 FE macro... \$30.00 | • 28-135 f4 PZ OSS FE . \$45.00 |
| • 16-35mm f4 FE \$25.00 | • 24-240mm f/3.5-6.3 \$20.00 |
| • 16-70mmE F4.0 \$35.00 | |



ZEISS LENSES

- 25mm F2.0 Batis FE ZEi... CALL
- 85mm F1.8 Batis FE ZE i.. CALL
- Loxia 35mm F2.0 FE \$30.00
- Loxia 50mm F2.0 FE \$30.00

PRICES SUBJECT TO CHANGE WITHOUT NOTICE.
ALL PRICES ARE PER DAY, UNLESS OTHERWISE INDICATED.

**Phase One IQ3 100MP****CALL***

100MP full frame CMOS sensor delivers unparalleled Phase One image quality built upon 16bit color depth, 15 stops dynamic range, ISO sensitivity up to 12800, and exposure times ranging from 1/4000th of a second to 60 minute exposures while still retaining the 1/1600th flash sync speed.

**Phase One IQ350****CALL*****Phase One IQ360****CALL*****Phase One IQ380****CALL***

The Phase One IQ3 50MP, 60MP & 80MP Digital Backs are full frame medium format digital backs equipped with the largest CMOS imaging sensor on the market, exclusive to Phase One. The IQ3 50MP can capture images up to 50 megapixels, IQ3 60MP can capture images up to 60 megapixels and the IQ3 80MP can capture images up to 80 megapixels with long exposure capabilities up to 60 minutes.

**Phase One IQ280****CALL***

- 80 megapixel resolution for extreme detail level
- Enormous dynamic range and unparalleled image quality
- Capture incredible details and reproduce your images in virtually any format and size with a minimum of post processing ISO 35
- Connect wirelessly to an IQ2 digital back

**Phase One IQ260****CALL***

- Expose as fast as 1/4000s or as slow as one hour.
- 60 megapixel captures that are virtually noise free
- 645 format full-frame sensor •Connect wirelessly to an IQ2 digital back

**Phase One IQ250****CALL***

- Capture stunning imagery in available light
- ISO100 to ISO6400 •14 f-stops dynamic range
- 50 megapixels captures continuous workflow
- Fluid Live View •Dynamic range of 14 f-stops

*4 day rental week

PRICES SUBJECT TO CHANGE WITHOUT NOTICE.
ALL PRICES ARE PER DAY, UNLESS OTHERWISE INDICATED.

PHASE**ONE** PHASE ONE LENSES



WITH SCHNEIDER OPTICS

- 28mm F4.5.....\$75.00*
- 28mm f/4.5 LS\$100.00*
- 35mm F3.5.....\$75.00*
- 35mm f/3.5 LS\$125.00*
- 45mm F2.8.....\$75.00*
- 55mm F2.8 LS\$75.00*
- 80mm F2.8 LS AF.....\$50.00*
- 110mm F2.8 LS AF.....\$75.00*
- 120mm F4 Macro.....\$75.00*
- 120mm f/4.0 LS\$125.00*
- 120mm F5.6 MFTS\$125.00*
- 75-150mm F4.5 AFD.....\$75.00*
- 150mm F3.5 LS\$75.00*
- 240mm F4.5.....\$100.00*

PENTAX PENTAX MEDIUM FORMAT



645Z Medium Format DSLR

CALL

- 51.4MP CMOS Sensor - 43.8 x 32.8 mm
- Prime III Image Processor
- Anti-Alias Filter-Less Design
- 3.2" 1037K Dot Tilttable Air-Gapless LCD
- Full HD 1080 60i/30p/24p Video Capture
- ISO Sensitivity Range of 100 - 204,800
- SAFOX II TTL 27 Point Autofocus System
- 3 fps Continuous Shooting

- 90mm F2.8ED AW Macro\$75.00
- 55mm F2.8 AL IF\$40.00
- 120mm F4.0 Macro\$40.00
- 28-45mm F4.5\$75.00
- 45-85mm F4.5\$55.00

*4 day rental week

PRICES SUBJECT TO CHANGE WITHOUT NOTICE.
ALL PRICES ARE PER DAY, UNLESS OTHERWISE INDICATED.

HASSELBLAD DIGITAL CAMERA BACKS

H A S S E L B L A D



Hasselblad H5X

\$175.00*

The H5X incorporates H5 technology and versatility including optimized True Focus AF and improved grip design. It is compatible with H-system lenses, CF/CFH backs, numerous third party digital backs and four distinct viewfinders.



Hasselblad H4X

\$125.00*

Designed to mirror the look and feel of the incredibly successful H1 and H2, and will support all H lenses, all H1 and H2/H2F compatible third-party backs, and the option for a film back. It'll also feature some of the functions of newer Hasselblad backs, like "True Focus" technology.



Hasselblad H4D 60

CALL

The Medium Format Hasselblad H4D-60 camera uses an extra large sensor with an impressive number of pixels, to support the shallow depth-of-field shooting that characterizes so much high-end shooting, and to provide the ultra-high resolution demanded by today's most discerning professionals.



Hasselblad H5D-40

CALL

- 40 Megapixel Resolution
- 32.9 x 43.8mm CCD Sensor
- 3.0" 24-Bit Color LCD w/ 460,320 Pixels
- True Focus II and Focus Confirm
- 16-Bit Color Definition



Hasselblad H5D-60

CALL

- 60 Megapixel Resolution
- 40.2 x 53.7mm CCD Sensor
- 3.0" 24-Bit Color LCD w/ 460,320 Pixels
- True Focus II and Focus Confirm
- 16-Bit Color Definition



Hasselblad H5D-50c

CALL

- 50 MP 43.8 x 32.9mm CMOS Sensor
- 3.0" 24-Bit Color LCD w/ 460,320 Pixels
- True Focus and Absolute Position Lock
- 16-Bit Color Definition
- Hasselblad RAW 3FR File Format

***4 day rental week**

PRICES SUBJECT TO CHANGE WITHOUT NOTICE.
ALL PRICES ARE PER DAY, UNLESS OTHERWISE INDICATED.

HASSELBLAD LENSES

HASSELBLAD



Hasselblad lenses use high performance central lens shutters, making them stable, quiet, and particularly useful for flash work at fast shutter speeds or many other tricky lighting situations. Whether it is a fashion shoot in the studio or an action shoot using portable fill-flash on location, Hasselblad central shutter lenses deliver correct captures at flash sync speeds up to 1/500 sec. That is four times faster than comparable focal plane shutters. And thanks to the T* anti-reflection coating and internal stray light reduction treatments, these lenses produce unbeatable image contrast and color saturation.

- HCD 24mm F4.8 lens\$125.00
- HC 35mm f/3.5 lens\$50.00
- HC 50mm f/3.5 lens\$50.00
- HC 50mm II f/3.5.....\$100.00
- HC 50-110mm f/3.5-4.5 zoom lens\$75.00
- HC 80mm f/2.8 lens\$40.00
- HC 120mm f/4 lens\$75.00
- HC 120mm II f/4.0.....\$100.00
- HC 150mm f/3.2 lens\$50.00
- HC 210mm f/4 lens\$50.00
- HC 300mm f/4 lens\$100.00
- HC 28mm f/4 lens\$100.00
(compatible with H3d only)
- HC 35-90mm f/4.0-5.6 \$100.00

Samy's Camera **PRO RENTAL STAFF** will be happy to **CUSTOMIZE** rental packages upon request.

For long term rentals please inquire about **PACKAGE DISCOUNTS!**

HASSELBLAD CAMERAS

HASSELBLAD

503CW Hasselblad



New mechanical body accepts CW winder. Has TTL flash control. Uses all magazines, finders and lenses.

- Body with Winder, 80mm f/2.8 lens
& 12 exp. mag\$45.00
- Body with Winder\$30.00
- Body only\$30.00
- CW Winder only w/IR remote\$10.00
- IR Remote (for use with CW Winder)\$5.00



Hasselblad 555 ELD

Motorized body. Auto film advance. Uses all mags, finders & lenses.

- Body only\$45.00

ELX Accessories

- Remote Cords (10, 15, or 20 Feet)\$5.00

903SWC Superwide Hasselblad

Features 38mm f/3.5 Biogon lens. Optically corrected viewfinder.



- Body with 12 exp. mag., view-finder,
Biogon 38 mm f/3.5 lens\$35.00
- Ground Glass Back\$7.00
- Magnifying Hood for Ground Glass\$5.00

HASSELBLAD LENSES

HASSELBLAD



Wide Angle Lenses

- 30mm f/3.5 Distagon Fisheye (180° field)\$40.00
- 40mm f/4.0 Distagon FLE Super wide angle30.00
- 50mm f/4.0 Distagon FLE wide angle20.00
- 60mm f/3.5 Distagon wide angle20.00

Normal Lenses

- 80mm f/2.8 Planar Normal\$18.00
- 100mm f/3.5 Planar Normal20.00



Telephoto Lenses

- 120mm f/4.0 Makro-Planar\$20.00
- 150mm f/4.0 Sonnar20.00
- 180mm f/4.0 Sonnar25.00
- 250mm f/5.6 Sonnar25.00
- 300mm f/5.6 Sonnar30.00
- 350mm f/5.6 Tele-tessar40.00
- 500mm f/8 Tele-tessar40.00



*Our inventory is
updated regularly -
if you don't see it
here, give us
a call!*



PRICES SUBJECT TO CHANGE WITHOUT NOTICE.
ALL PRICES ARE PER DAY, UNLESS OTHERWISE INDICATED.

HASSELBLAD LENSES

H A S S E L B L A D



Special Application Lenses

- 250 Super Achromat\$30.00
- 350 CFE Super Achromat\$42.00
- 1.4 XE APO Teleconverter.....\$20.00
- 140-280mm f/5.6 Variogon Zoom\$42.00
- Mutar 2X Teleconverter.....\$20.00
- Mutar 1.4 Teleconverter w/shift control\$20.00



Hasselblad Film Magazines

- A12 Mag, 12 exp (120 film)\$10.00
- A24 Mag, 24 exp (220 film)\$10.00
- Mag 100 Polaroid back\$10.00



Hasselblad Viewfinders

- PM5 Prism viewfinder (45°)\$10.00
- PME51 Prism viewfinder (meter prism)\$17.00
- RM-2 Prism viewfinder\$10.00
- PM-90 Prism viewfinder\$10.00
- PME-90 Prism viewfinder\$20.00
- Magnifying hood (smokestack)\$5.00
- Standard focusing hood\$5.00

Samy's Camera **PRO RENTAL STAFF** will be happy to **CUSTOMIZE** rental packages upon request.

For long term rentals please inquire about **PACKAGE DISCOUNTS!**

PRICES SUBJECT TO CHANGE WITHOUT NOTICE.
ALL PRICES ARE PER DAY, UNLESS OTHERWISE INDICATED.

Mamiya 7 II

A 6x7cm AE rangefinder camera with interchangeable leaf shutter lenses.

- Body\$25.00
- 43mm f/4.5 lens w/optical viewfinder\$30.00
- 50mm f/4.5 w/optical viewfinder\$25.00
- 65mm f/4.0 lens\$20.00
- F80mm f/4.0 lens\$20.00
- 150mm f/4.5 lens\$20.00
- 210mm f/8 lens\$20.00
- Quick release\$6.00

RZ67 Pro-II

A 6" x 7", all-electronically controlled, medium format, single lens reflex camera with interchangeable revolving backs that accepts a Polaroid film holder. Also features motorized film advance and automatic exposure capabilities.

- Body, waist level finder, back, and
90mm f/3.5 lens or 110 mm f/2.8\$50.00
- RZ Pro II Body\$25.00
- RZ Pro II D Body.....\$40.00

Accessories

- 120 Back\$10.00
- 220 Back\$10.00
- Polaroid back\$10.00
- Mask set.....\$5.00
- AE Prism Finder.....\$20.00
- L-Grip\$10.00
- Pro Shade\$10.00
- Extra 77 mounting ring.....\$1.00
- Winder\$10.00
- Dual Cable release\$3.00

PRICES SUBJECT TO CHANGE WITHOUT NOTICE.
ALL PRICES ARE PER DAY, UNLESS OTHERWISE INDICATED.

Mamiya

MAMIYA RZ LENSES

Wide Angle



- 37mm f/4.5Z Fisheye\$30.00
- 50mm f/4.5Z or ULD lens\$20.00
- 65mm f/4.0 L-A\$20.00
- 75mm f/3.5 L or short barrel\$20.00
- 75mm f/4.5Z PC lens\$35.00

Normal



- 90mm f/3.5 Z normal\$18.00
- 110mm f/2.8Z normal\$18.00
- 127mm f/3.8Z normal\$20.00

Telephoto



- 140mm f/4.5Z macro-portrait\$20.00
- 150mm f/3.5Z portrait\$20.00
- RZ/ZORK 150mm f/PC lens\$25.00
- 180mm f/4.5Z telephoto\$20.00
- 180mm f/4.5 Soft Focus\$20.00
- 250mm f/4.5Z telephoto\$22.00
- 360mm f/6.0 super telephoto\$25.00
- 500mm f/8.0Z super telephoto\$40.00

ApoChromatic Telephoto



- 210mm f/4.5Z APO\$35.00
- 250mm f/4.5Z APO\$45.00
- 350mm f/5.6Z APO\$48.00
- 500mm f/5.6Z APO\$65.00

Zoom



- 100-200mm f/5.2Z Zoom\$40.00

PRICES SUBJECT TO CHANGE WITHOUT NOTICE.
ALL PRICES ARE PER DAY, UNLESS OTHERWISE INDICATED.

ALPA

ALPA®
OF SWITZERLAND



ALPA 12 XY

\$100.00

The new ALPA 12 XY is an element of a complete system and not just an isolated new model. This means that all ALPA 12 camera bodies can use absolutely the same lenses, backs, back adapters, groundglasses, etc. It is a system that contains also lighter and smaller cameras, e.g. the ALPA, TC or the WA and SWA. You have to look at the complete system to fully understand each model's role. The ALPA 12 system: no compromise, exactly the right model for a specific use.



ALPA 12 TC

The ALPA 12 TC is the newest part of the ALPA 12 system. It is even smaller than the already compact ALPA 12 WA/SWA. This camera is fully compatible with all the elements of the ALPA 12 system: lenses, backs, viewfinders, accessories etc. It is the smallest up to 6x9 film camera and the smallest camera with exchangeable optics for today's high end digital backs.

- Body only\$50.00
- 24mm f/5.6 XL Apo Digitar\$75.00
- 35mm f/5.6 XL Apo Digitar\$75.00
- 47mm f/5.6 XL Apo Digitar\$75.00
- Center filter\$20.00
- Grip w/ no sleep cable\$20.00
- Phase One plate\$20.00

Samy's Camera **PRO RENTAL STAFF** will be happy to **CUSTOMIZE** rental packages upon request.

For long term rentals please inquire about **PACKAGE DISCOUNTS!**



**Value Added
Reseller**
Professional Photography

APPLE MACINTOSH COMPUTERS



Apple Mac Pro

CALL

- 2.7 GHz 12-Core
- 1TB Flash Storage
- Dual AMD Firepro D700 CPU
- 32GB RAM



Apple Macbook Pro 15"

CALL

Retina Display

- 2.2GHz quad-core Intel Core i7
- Turbo Boost up to 3.4GHz
- 16GB 1600MHz memory
- 256GB PCIe-based flash storage1
- Intel Iris Pro Graphics



Apple Macbook Pro 17"

CALL

2.4GHz Quad-core Intel i7

- 17-inch (diagonal) LED-backlit Hi-Res glossy widescreen display, 1920-by-1200 resolution
- 4GB (2 x 2GB) of 1333MHz DDR3 SDRAM
- 750GB Serial ATA @ 5400 rpm
- 8x double-layer SuperDrive (DVD±R DL/DVD±RW/CD-RW)
- Intel HD Graphics 3000 and AMD Radeon HD 6770M

*4 day rental week

PRICES SUBJECT TO CHANGE WITHOUT NOTICE.
ALL PRICES ARE PER DAY, UNLESS OTHERWISE INDICATED.



Value Added
Reseller
Professional Photography

APPLE MACINTOSH DISPLAYS



30" Cinema HD Display

\$150.00

- 1920 x 1200
- Ideal for Color-Critical Work



Apple 27" Thunderbolt Display

\$150.00

- incredible 2560 x 1440 resolution
- 6 ports on the monitor include the Thunderbolt port, 3 powered USB 2.0 ports, a FireWire 800 port, a Gigabit Ethernet port, and a Kensington security slot.



EIZO

EIZO DISPLAYS



ColorEdge CG211

\$175.00

Ideal for soft proofing, the CG211 offers 12-bit hardware calibration and uniform brightness and color across the screen. It also comes with unique usability features like hardware-based support for portrait mode with both Mac and Windows PCs.



ColorEdge CG246

\$225.00

Delivers outstanding color and performance for professionals who work with still or moving pictures. It has a wide color gamut, built-in calibration sensor, several presets for broadcast standards, and is backed by an industry leading 5-year warranty.

PRICES SUBJECT TO CHANGE WITHOUT NOTICE.
ALL PRICES ARE PER DAY, UNLESS OTHERWISE INDICATED.

UNDERWATER HOUSINGS

AQUATICA
Digital

Canon



Aquatica Housing for 5D Mark II \$200.00

- Operates safely to a depth of 300' (90m)
- The lens port has a positive mounting and locking mechanism, which leaves no doubt that your port is securely in place and watertight.

Aquatica Housing for 5D Mark III \$250.00

- Depth Rating: 295.3'
- Anodized Aluminum Construction

Aquatica Housing for 1DC / DCx \$350.00

SAMY'S EXCLUSIVE!

- Milled from a solid block of 6061 T6 aircraft grade aluminum, it is black anodized and then for further protection, a resistant polyester electrostatic powder coat paint is added
- Depth Rating of 300ft / 90m •Optimized for video shooters



Aquatica Housing for Nikon D800 \$250.00

- Depth Rating: 295' / 90m
- Access to virtually all camera functions via mechanical controls
- interchangeable lens port system

Aquatica Housing for Nikon D4 \$350.00

- Depth Rating: 295' / 90m
- Aircraft-grade aluminum alloy, which has been anodized
- Mechanical controls provide easy access to virtually all camera functions

Nauticam



Nauticam Housing for Blackmagic 2.5K & 4K

\$275.00

- Depth Rating: 328' / 100m
- Up to 17 manual controls
- Touch screen controls provide menu access to key camera and exposure settings

Blackmagicdesign



8" Port, Extension Ring and Zoom Gear available for an additional charge.

Nauticam Housing for Panasonic DMC-GH3/DMC-GH4

\$200.00

- Depth Rating: 328' / 100m
- Maximize control of camera for both still and video
- Machined from solid aluminum



Panasonic

Aquatech Elite Surf-Housing available on request.

*Ask about
our extended
rental pricing!*

PRICES SUBJECT TO CHANGE WITHOUT NOTICE.
ALL PRICES ARE PER DAY, UNLESS OTHERWISE INDICATED.

UNDERWATER HOUSINGS

SONY
make.believe



Nauticam Housing for Sony A7 and A7R

\$150.00

- Depth Rating: 229' / 70m
- intuitive, convenient access to key controls
- Configured for the Phase One 28mm wide angle lens with a 9" glass dome port

8" Port, Extension Ring and Zoom Gear available for an additional charge.

AquaTech



Aquatech Elite Surf Housings

- 5D Mark III\$150.00
- D800\$150.00
- 1DC / 1Dx.....\$150.00
- P110 Port\$25.00
- P120 Port\$25.00
- P145 Port\$45.00
- P160 Port\$45.00
- P215 Port\$45.00
- PD135 Port.....\$45.00
- PD75 Port.....\$15.00
- Pistol Grip 1Dx / 5D Mark III / D800.....\$35.00
- Strike 600EX Housing.....\$50.00

**LIGHT.
MOTION**

LIGHT & MOTION SOLA 1200

\$30.00

LIGHT & MOTION SOLA 2500

\$60.00

LIGHT & MOTION SOLA 4000

\$100.00

Arms and trays included.



SEA&SEA

SEA & SEA YS-01

\$35.00

SEA & SEA YS-D1

\$40.00

SEA & SEA YS-250PRO

\$50.00



Sync cords and arms included

UNDERWATER LIGHTS, STROBES & ACCESSORIES



**DP 4 MONITOR &
NAUTICAM HOUSING
ATOMOS NINJA II
HOUSING**

\$100.00

\$175.00

POOL OR SURF SHOOTER
Only good to 33'

PRICES SUBJECT TO CHANGE WITHOUT NOTICE.
ALL PRICES ARE PER DAY, UNLESS OTHERWISE INDICATED.

CANON CINEMA EOS



Canon EOS C500

CALL

The Cinema EOS C500 4K Digital Cinema Camera capitalizes on the groundbreaking ergonomic design of the EOS C300 camera, and offers a Super 35mm, 8.85-megapixel CMOS image sensor, DIGIC DV III Image Processor and an expansive range of recording and output options specifically for 4K and 2K image acquisition. Addressing the discrete needs of cinema and TV, the EOS C500 offers two forms of 4K origination - productions can dynamically select DCI (SMPTE 2048-1:2011 standard) or the alternative television-centric Quad-HD (SMPTE 2036-1:2009 and ITU-R BT.1769 standards) source image formats.



Canon EOS C300 Mark II

CALL

II Camcorder Body with Dual Pixel CMOS AF features a Super 35mm CMOS. This provides faster and more accurate autofocus to assist users when operating with small crews. A powerful cinema camera with an expanded dynamic range of 15 stops, 4K/2K/HD internal and external recording (including 4K RAW output), improved Dual Pixel CMOS Autofocus, and dual CFast card slots.

Canon EOS C300

CALL



Canon EOS C100 Mark II

CALL

Featuring Canon's innovative Dual Pixel CMOS autofocus technology, the EOS C100 Mark II camera has been designed to improve the shooting experience with increased accuracy and control. Advanced image processing provides enhanced color resolution and virtually eliminates unwanted artifacts. Improved ergonomics and a larger, tiltable electronic viewfinder gives the EOS C100 Mark II a more comfortable handling experience. The EOS C100 Mark II's ability to record a variety of frame rates and codecs, including 1080/60p and MP4 files, offers vast potential to independent production companies, documentary filmmakers, and event videographers.

Canon EOS C100

CALL



Canon Cinema EOS Lenses

CALL

- CN-E14mm T3.1 L F
- CN-E24mm T1.5 L F
- CN-E35mm T1.5 L F
- CN-E50mm T1.3 L F
- CN-E85mm T1.3 L F
- CN-E135mm T2.2 L F
- CN-E30-105mm T2.8 L SP
- CN-E30-300mm T2.95 - 3.7

PRICES SUBJECT TO CHANGE WITHOUT NOTICE.
ALL PRICES ARE PER DAY, UNLESS OTHERWISE INDICATED.

ZACUTO ZACUTO Z-FINDER



Z-Finder Pro 3x

\$25.00

Allows DSLR cameras to have the correct form factor for video. It offers 3x focusable magnification, a 40mm diameter Zacuto optical designed lens, an anti-fog coating protective cover, an eyecup preventing extraneous light leakage, a diopter and a field of view perfectly matched to 3" LCD screens.



Z-Finder EVF Pro

\$75.00

- TFT LCD Display / Resolution - 800 x 480
- Two HDMI Ports • EVF Flip Model / Optical Viewfinder
- Anti-Fog Shield / Diopter Ring

Panasonic

PANASONIC MIRRORLESS CAMERAS



DMC-GH4 Body

\$65.00

A true hybrid camera designed for both professional photo and video use. It features a 16.05MP Digital Live MOS sensor and a 4-CPU Venus Engine, capable of capturing high-resolution JPEG and RAW stills, as well as UHD 4K 3840x2160 30p/24p and cinematic DCI 4K 4096x2160 video at 24p. Weather-sealed magnesium alloy body.

4K



DMW-YAGH Interface Unit for GH4

\$50.00

Designed to give the Lumix DMC-GH4 camera the video, audio, and power connectivity required for professional video workflows.

MICRO 4/3 LENSES



Panasonic

- 8mm f/3.5.....\$25.00
- 20mm F/1.7.....\$30.00
- 7-14mm F/4.....\$30.00
- 14-42mm F/3.5-5.6\$25.00
- 14-140mm F/3.5-5.6 ...\$40.00



Sigma

- 19mm F2.8 DN.....\$25.00
- 30mm F2.8 DN.....\$25.00
- 60mm F2.8 DN.....\$25.00

PRICES SUBJECT TO CHANGE WITHOUT NOTICE.
ALL PRICES ARE PER DAY, UNLESS OTHERWISE INDICATED.

CANON CAMCORDERS

Canon



Canon XF305

CALL

Features 50Mbps MPEG-2 4:2:2 recording to Compact Flash (CF) cards for unsurpassed image quality and efficient, robust workflow at an affordable price. It is ideally suited to match the requirements of electronic newsgathering (ENG) crews, independent filmmakers, documentary producers, event videographers and military agencies.

Utilizing file-based MPEG-2 compression with an MXF File Wrapper ensures the widest compatibility with existing industry infrastructure, metadata and non-linear editing (NLE) systems. And 4:2:2 color sampling provides ultra-fine transitions in tone and color for maintaining the highest quality image for use in advanced post production.



Canon XF105

\$150.00

An amazingly compact, fully featured pro video camera that imports nearly all the features and functionality of the 3-chip XF305 into a smaller, single sensor form factor. Canon's robust MPEG-2 4:2:2 codec the XF105 records full HD 1920 x 1080 video to affordable Compact Flash cards.



Canon XA10

\$125 Daily

Designed for situations where mobility is critical while shooting. This feature-rich, professional model records Full HD 1080p using an AVCHD codec. The ultimate professional camcorder for run-and-gun shooting, the compact XA10 includes a detachable handle for low-angle shooting and portability. With the handle attached the XA10's functionality is further enhanced with the addition of XLR inputs and an external microphone holder.

CANON CAMCORDERS

Canon



Canon XA25

\$150.00

A compact "run-and-gun" camera that is suitable for ENG, event coverage, independent and documentary filmmaking. The camera features a 1/2.84", 1920 x 1080 CMOS sensor that captures video at various frame rates up to 59.94p, including a 24p mode for a more cinematic feel. The integrated Canon 20x HD Optical zoom lens has a 35mm equivalent zoom range of 26.8 to 576mm and features an 8-bladed iris to render highlights in a more natural manner.



Canon XHA1

\$200.00

XH A1 Canon 20x HD zoom lens with Professional L Series Fluorite. Super-Range Optical Image Stabilization, and Instant AF (Auto Focus) ensures ultra-quick, accurate focus. The DIGIC DV II HD image processor then ensures improved color reproduction and noise reduction. If you need advanced image control, the XH A1 gives you features that let you make manual adjustments to fine-tune your video.



Canon HFS 200

\$75.00

Canon's VIXIA HF S200 Flash Memory Camcorder, with two SD memory card slots, offers Canon's most sophisticated feature set to date - blurring the line between consumer and professional. Record 8MP photos with incredible detail and lifelike color. Touch & Track allows you to achieve sharp focus and precise exposure for any subject. Native 24p Mode and 5.1-Channel Surround Sound ensures your audio complements the stunning realism of your video.



Canon VIXIA HF M500

\$75.00

A 1920 x 1080 high def cam with an SD/SDHC/SDXC memory card slot that supports up to 64GB memory cards. The camera's 1/3" HD CMOS Pro Sensor and image processor work together to provide stunningly detailed, life-like images that look great on your HDTV. Also employs a genuine Canon 10x HD video lens, optical image stabilization, powered image stabilization and a 3.0" widescreen touch screen LCD display.

PRICES SUBJECT TO CHANGE WITHOUT NOTICE.
ALL PRICES ARE PER DAY, UNLESS OTHERWISE INDICATED.

PANASONIC CAMCORDERS

Panasonic

AG-AF100 Micro Four Thirds

Professional HD Video Camera

\$175.00



The first professional 4/3" large image video camcorder optimized for high-definition video recording. The AF100 delivers the shallow depth of field and wider field of view of a large imager, with the flexibility and cost advantages of handheld camcorder. It has the ability to use virtually any professional quality lens with the addition of an easily obtainable adapter.

- 4/3 Nikon or EOS adapter.....\$15.00

AG-HVX200 16:9 HD-DVCPRO DV

Cinema P2 Camera

\$125.00



New DSP with 14-bit A/D conversion and 19-bit internal processing for unprecedented accuracy, 16:9 native for HD wide-angle Leica Dicomar HD lens with optical image stabilizer (motorized / manual mode switchable) high resolution 235,000 pixel.

- 16GB Card.....\$35.00
- 32GB Card.....\$50.00

* 4 day week

GoPro
Be a **HERO**

GO PRO

GoPro HD HERO3 / HERO 3+ / HERO 4

Black Edition

\$50.00



Wearable and gear mountable, waterproof to 197' (60m), capable of capturing ultra-wide 1440p 48fps, 1080p 60 fps and 720p 120 fps video and 12MP photos at a rate of 30 photos per second, the HERO3: Black Edition is the world's most versatile camera. With built-in Wi-Fi, GoPro App compatibility and the included Wi-Fi Remote.

PRICES SUBJECT TO CHANGE WITHOUT NOTICE.
ALL PRICES ARE PER DAY, UNLESS OTHERWISE INDICATED.

SONY CAMCORDERS

SONY
make.believe



PMWEX3 XDCAM EX

\$275.00*

The PMW-EX3 compact camcorder with an interchangeable lens system incorporates three 1/2-inch type Exmor™ Full HD CMOS sensors, each with an effective pixel count of 1920 x 1080, delivering stunning-quality HD images in 1080P, 720P, and 1080i HD resolutions



PMW-EX1 HD Camera

\$200.00*

A powerful HD handheld camcorder with incredible feature sets that include three 1/2" CMOS sensors, amazing 1920 x 1080 and 1280 x 720 HD recording capability plus flash memory recording.

- .8 w/a adapter for EX-1\$40.00
- SBP 8 GB Card\$25.00
- SBP 16 GB Card.....\$50.00
- SBP 32 GB Card.....\$75.00



HVR-Z1U 3CCD HD Camcorder

with 12x Optical Zoom

\$250.00

The HDV 1080i specification features 1080 effective interlaced scanning lines and 1,440 horizontal pixels.



Sony PMW-F3L

CALL

3-CCD HDV High Definition Camcorder with 12x Optical Zoom. The HDR-FX1 records video to standard MiniDV tapes at 1080 lines of resolution, 60 interlaced fields a second. 1/3-inch CCDs at HD quality



Sony NEX-FS7000

CALL

A fully professional large-sensor video camera, this compact, highly modular camera uses a very similar-sized Super 35 CMOS sensor as the FS100. But as a marked improvement over that earlier model's sensor, the FS700 features a native 4K resolution sensor.



Sony PXW-Z100

CALL

Professional-quality 4K recording in a familiar handheld form factor. It is capable of recording true 4K 4096x2160 resolution video at up to 50 and 60fps. Utilizing Sony's XVAC 4:2:2 10-bit intra frame recording format, the same found in the PMW-F55 CineAlta camera, the PXW-Z100 records 4K video at a maximum bit rate of 600Mbps.

*4 day week

PRICES SUBJECT TO CHANGE WITHOUT NOTICE.
ALL PRICES ARE PER DAY, UNLESS OTHERWISE INDICATED.

SONY CAMCORDERS AND DECKS

SONY
make.believe



PD 170 Mini DV 3 Chip Camcorder **\$200.00**

- Autofocus
- 12X optical zoom, 20/48X digital zoom
- 530 TV lines of horizontal resolution
- 16:9 / 4:3 aspect ratio switchable
- 4:3 native. 2 lux minimum illumination



HVRM10U Compact Player/Recorder

\$150.00

- Switchable HDV/DVCAM/DV format recording.
HDV 720/30p playback (no 720p recording)
- 60i/50i (NTSC/PAL) switchable
- Built in HD to SD down conversion (50i/60i/30F/25F)
- On-screen audio level meter



DSR-11 DVCAM

Digital Videocassette Recorder **\$125.00**

Two-channel 48kHz/16-bit or four-channel 32kHz/12-bit recording, providing a wide dynamic range & excellent signal-to-noise ratio comparable to CD quality

- DV EE Out – signals from analog input can be converted into digital signals & can be output from the iLINK connector
- DV Format Recording & Playback

CAMERA STABILIZATION



MOVI

FREEFLY MOVI M5 3-Axis Motorized Gimbal Stabilizer

CALL

Designed for mid-sized DSLRs, mirrorless cameras, and camcorders weighing up to 5 pounds, including the lens. For camera stabilization the M5 uses three motors and an IMU (inertial measurement unit) to detect and counteract unwanted movement along three axes: pan, tilt, and roll. In particular, compensating for handshake or vehicle-induced vibration and reducing translation. There is a quick-release adapter available separately so that it can be mounted on cranes, jibs, vehicle mounts, and other camera support equipment. There is also an MR (multi-rotor) conversion kit, available separately, so that it can be mounted on a UAV.



Ronin 3-Axis Brushless Gimbal Stabilizer

CALL

a camera stabilization system designed to give the operator close to the freedom of unencumbered handheld shooting but without the hand-shake. Suitable for most camera types and configurations up to 16 pounds, Ronin uses brushless motors that work on three axes: one for side-to-side "roll" - keeping the horizon level - one for tilt, and one for pan. The system is computer-controlled and boasts a precision of control of $\pm 0.02^\circ$. An IMU (inertial measurement movement) detects movement and engages the motors to react, using algorithms to differentiate between intentional movement such as pans and tracking shots from unwanted shake. In addition to handheld shooting, the gimbal can be used in vehicle mounting scenarios and other contexts where vibrations or other abrupt movements would make tripods and rigid camera support systems unsuitable.

Samy's Camera **PRO RENTAL STAFF** will be happy to **CUSTOMIZE** rental packages upon request.

For long term rentals please inquire about **PACKAGE DISCOUNTS!**

PRICES SUBJECT TO CHANGE WITHOUT NOTICE.
ALL PRICES ARE PER DAY, UNLESS OTHERWISE INDICATED.

REDROCK MICRO



Redrock DSLR Cinema

A comprehensive package for converting video DSLRs to useful cinema production tools. This bundle is compatible with most video DSLRs including the Nikon D90 and Canon 7D, Canon 5D Mark II, and can be adapted for use with full size DSLRs such as the Canon 1D MKIV and Nikon D3s.

The Redrock DSLR Cinema Bundle does not include external monitor, articulating (isreali) arm, or 35mm lenses.



Redrock DSLR Cinema Bundle **\$100 Daily** **\$400 Weekly**

- DSLR baseplate
- Tripod platform
- 1x pair 12" 15mm carbon fiber rods (60mm spacing) for baseplate rod support
- microMatteBox (Deluxe Bundle including eyebrow and side wings)
- microFollowFocus Unit
- microHandle top handle for carrying, and low mode shooting
- 1x pair 12" 15mm carbon fiber rods for side rods
- 3x 15mm support arms for cage
- 1 pair 9" 15mm carbon fiber rods for top rods



Redrock Eyespy

For a more traditional shouldermount shooting style we offer the EyeSpy rigs. EyeSpy starts with the shoulderpad, 18" 15mm carbon fiber rods, and single rubberized handgrip from the popular microShoulderMount. We've added an additional rod extension to center the camera for viewfinder use, and topped it off with the DSLR baseplate, and microFinder loupe accessory.



Redrock Eyespy Bundle **\$60.00 Daily** **\$240 Weekly**

- Shoulderpad
- Handgrip
- 18" 15mm carbon fiber rods
- MicroLink4 offset for viewfinder use
- Choice of offset for standard DSLR body or body with battery grip
- DSLR baseplate
- microFinder loupe accessory
- microBalance weights (2)
- microFollowFocus v2
- Weight 6 lb 11 oz

Our inventory is updated regularly - if you don't see it here, give us a call!

PRICES SUBJECT TO CHANGE WITHOUT NOTICE.
ALL PRICES ARE PER DAY, UNLESS OTHERWISE INDICATED.

REDROCK MICRO



Captain Stubling

The Captain Stubling builds off the UltraPort by incorporating the microFollowFocus for precise focus control, and moving one of the handgrips back on a 4" grip rod so the rig can be steadied in both hands while the thumb and forefinger of the left hand control focus.



Captain Stubling Bundle

\$50.00 Daily

\$200.00 Weekly

- DSLR Baseplate
- Handlebar rod clamp
- Two Rubberized Hand Grips
- One 4 inch grip rod
- One 4 inch handlebar rod
- Two 9 inch carbon fiber rods



The Event

Designed for extra stability while maintaining the freedom of handheld shooting, theEvent is designed with wedding/event and photojournalists in mind. TheEvent sports two rugged handgrips and the microFinder loupe accessory, and adds our new micro-Brace body pad for and additional point of contact. Lightweight 6" carbon fiber rods keep the rig light and compact, and still allow enough room to add a microFollowFocus if desired.



The Event Bundle

\$45.00 Daily

\$180.00 Weekly

- DSLR Baseplate
- Two 6 inch 15mm carbon fiber rods
- microBrace body pad accessory kit
- Two Rubberized Hand Grips
- Handlebar rod clamp
- Two 4 inch handlebar rods



Micro Follow Focus Blue

\$50.00 Daily

The unit mounts solidly on any 15mm rod support system. Compatible with cinema lenses, this follow focus incorporates unique hard stops for perfect focus every time. Additional features of this unit include: 0.8 film pitch drive gear, 3D marking disk, industry-standard accessory port for focus pulling whips and cranks, and a quick release clamp.



UltraCage C300

\$50.00 Daily

The ideal shoulder-mount rig for handheld shooting when using an external monitor or third party EVF for monitoring. The Field Cinema Bundle combines the best of Redrock's cinema accessories with the new ultraCage blue for the C300 to make a rig that is comfortable for all-day shooting and gives you the C300-specific features of the ultraCage.

UltraCage 5D Mark II / III

\$75.00 Daily

PRICES SUBJECT TO CHANGE WITHOUT NOTICE.
ALL PRICES ARE PER DAY, UNLESS OTHERWISE INDICATED.

ARRI CAMERA SUPPORT SYSTEMS



ARRI SUPPORT SYSTEM

CALL

For decades ARRI's bridgeplates, baseplates and bars have been recognised as the most stable and reliable support systems for film cameras and lenses. New models now bring the same tried and tested principles to the support of digital cameras, allowing even HD DV models to benefit from sturdy connection to grip equipment and a means of utilising film style accessories.



ARRI CAGE SYSTEM

CALL

The CAGE SYSTEM I fits to the Mini Base Plate MBP-3 and the baseplate for Canon C 100/ 300/ 500 cameras. The cage offers a non-obstructive solution for the mounting of accessories through industry-standard 3/8-16" and 1/4-20" interfaces.



ARRI MATTEBOX

CALL

Designed for situations in which compactness and minimal weight are crucial, ARRI's lightweight matte boxes clamp directly to the front of almost any film or digital lens. The four different matte boxes in this range incorporate multiple filter trays and cater to every standard filter size.



ARRI FOLLOW FOCUS

CALL

Smooth, quiet and ergonomic in operation, ARRI's follow focus units are mainstays of the industry and can be set up in an almost limitless number of configurations for ease of use. The newly expanded range is made up of purpose-designed models for both film and digital cameras.



GLIDECAM STABILIZERS



Glidecam HD2000

\$45.00 / Day

- Weighing from 2 to 6 pounds.
- Head Dimensions: 7.50" x 4.125" x 1.00"
- Base Platform Dimensions: 11.50" x 4.00" to—15.00" x 4.00"
- Central Support Post: 1.00" diameter
- 15" tall in shortest mode 22" tall in longest mode
- Weight: 2.537 pounds without counter weight plates.
- Each Custom Counter Weight Plate averages .272 pounds.
- The Glidecam HD-2000 includes 12 custom counter weight plates.
- 12 counter weight plates = 3.264 pounds
- Camera Plate has 1/4" mounting holes



Glidecam HD4000

\$55.00 / Day

- Designed for compact and full size cameras weighing from 4 to 10 pounds.
- Head Dimensions: 8.750" x 5.00" x 1.00"
- Base Platform Dimensions: 13.75" x 4.75" to 18.25" x 4.75"
- Central Support Post: 1.00" diameter
- 20" tall in shortest mode
- 28" tall in longest mode
- Weight: 3.315 pounds without counter weight plates.
- Each Custom Counter Weight Plate averages .272 pounds.
- The Glidecam HD-4000 includes 12 custom counter weight plates.
- 12 counter weight plates = 3.264 pounds
- Camera Plate has 1/4" & 3/8" mounting holes

*Our inventory is
updated regularly -
if you don't see it
here, give us
a call!*

STEADICAM STABILIZERS

STEADICAM

SteadyCam M-1



A modular camera stabilizer designed specifically for HD broadcast, feature film, and all demanding camera stabilization requirements. The highly adaptive and open architecture of the Steadicam M-1 allows for extreme system configuration and quickly accommodates industry standard cameras and accessories. Built around rigid, all-aluminum base and stage frames; rigid, high modulus, and indexed carbon fiber telescopic posts; and an ultra-high-precision gimbal.



SteadyCam Pilot

\$250.00 / Day*

The PILOT with IDX battery system provides the user with a complete system. Through the addition of the user's camera and a SteadiSTAND or similar balance stand the unit is ready to use. The IDX E-7S battery is based on the V-Lock mounting system and will provide power for the on board monitor and any optional accessories. Should the camera have a 12 volt input or a converter for 7.2 Volt operation the IDX battery has sufficient capacity to power both the camera, monitor and accessories.

*4 day week

Samy's Camera **PRO RENTAL STAFF** will be happy to **CUSTOMIZE** rental packages upon request.

For long term rentals please inquire about **PACKAGE DISCOUNTS!**

CAMERA SUPPORT SYSTEMS



ALBA READYRIG

\$60.00 Daily

The Ready Rig* is new a shoulder-mounted DSLR / HDV camera stabilizer. Its 4-point stabilization system balances and completely eliminates weight. The camera floats in front of the operator. Achieve stable continuous camera movements or adjust the rail system close to the body for steady hand-held shots. Hands-free operation allows for easy access to pull focus, operate a zoom lens, or adjust camera settings. The Ready Rig is proudly made in America.



- 4 points of stabilization
- Eliminates camera weight
- Achieve Dutch Angles
- Pull focus and zoom simultaneously
- Monitor & Accessory Mounts
- Change lenses without removing camera
- Suggested load capacity 12-17lbs.
- Hands-Free Operation
- Instantly reposition camera low and high
- 180° tilt head
- Perfect for DSLR & HDV Cameras



HD Camera Brace

\$40.00 Daily

A heavy duty cinematic camera support system that will allow any filmmaker to achieve professional results. The Habbycam HD camera support is used around the world by professional cinematographers to help support the camera's weight and achieve steady images.



VIDEO RECORDERS



Ki Pro Quad

\$250.00 / Day

Enables a manageable 4K/Quad HD/2K/HD workflow with the efficiencies of Apple ProRes and the flexibility of RAW data in a compact, solid state recording and playback package that easily mounts directly on a variety of cameras.

- Ki Pac 512GB Card \$50.00



ATOMOS



NINJA 2 Recorder

\$100.00 / Day

10bit Smart Production for DSLRs & HDMI Cameras. Provides top quality recording but also features monitoring functions that help assess exposure, focus and calibration. Also available are intuitive signal detection and file management tools. All tasks are performed in an advanced yet simple touchscreen operating environment.



SAMURAI BLADE

\$125.00 / Day

Camera-mounted recorder, monitor, WFM & deck for HD-SDI cameras. Captures 10-bit HD resolution video directly from you HD camera and stores it to an internal 2.5" laptop drive. Images are captured using Apple's ProRes codec or Avid's DNxHD codec.



SHOGUN 4K HDMI/12G-SDI Recorder and 7" Monitor

\$150.00 / Day

combines a color-calibrated 1920 x 1200 resolution display with 4K video recording and edit-ready codecs. The Shogun utilizes 4K HDMI and 12G-SDI inputs to record clean output signals at resolutions up to UHD 4K (3840 x 2160) at 23.98, 24, 25, 29.97, and 30p, as well as Full HD (1920 x 1080) video up to 120 fps when used with capable cameras.

WIRELESS VIDEO TRANSFER



Bolt Pro Wireless 1080p60 SDI Monitoring Transmitter Receiver

\$150.00 / Day

\$25.00 / Day

Wirelessly transmits an uncompressed HD video signal in up to 1080p60 4:2:2 as far as 300 ft with zero delay. The receiver features two 3G-SDI outputs for dual monitoring. One of these can be used to pass the video signal to an optional Teradek Cube Encoder, which will stream the signal even further on by WiFi or Ethernet, although only in up to 1080p30.

PRICES SUBJECT TO CHANGE WITHOUT NOTICE.
ALL PRICES ARE PER DAY, UNLESS OTHERWISE INDICATED.

MONITORS

Marshall Electronics



7" Marshall V-LCD70XP-HDMI **\$90.00 Daily**

This 7" monitor offers standard features including a wide variety of formats and markers, 4 user-configurable front panel function buttons, RGB Check Field / Field Detect, RGB gain and bias control, 4-pin XLR power jack, and optical grade polycarbonate screen protection. Two other major features include Marshall's industry leading FALSE COLOR and PEAKING Filters. This model also comes in 2 other major module configurations: 3GSDI (Composite, YPbPr and 3G/HD/SDI) and HDA (Composite, YPbPr). These units also offer the ability to adapt up to nine different battery configurations for providing mobile operation in the field.



TV Logic VFM056WP **\$90.00 Daily**

The TV Logic VFM-056WP monitor is ideal for HDSLR and Compact HD work. Features include a lightweight design, LED backlit LCD, DSLR Scale, Focus Assist, Various Scan Modes, Markers, Audio Level Meter with speaker and time code display. This monitor converts the HDMI input signal to an HD-SDI output.

Panasonic



Panasonic HD BTLH Monitor **\$100.00**

The BT-LH 1700W 17" widescreen production-quality monitor features two auto-switching SDI / HD-SDI inputs, waveform monitoring, and freeze frame/split screen functions.

SONY

make.believe



PVM-1741 Monitor **\$125.00***

The PVM-1741 "All in one" OLED picture monitor delivers unparalleled picture quality, all in a compact design. Superb black performance, wide colour gamut, and quick response with virtually no motion blur. By combining the Sony OLED display panel (Full HD, 10-bit driver) and Sony's OLED processing technologies, the PVM-1741 OLED monitor delivers groundbreaking picture quality.

*4 Day Week

ViewSonic



VX2880ml 28" Ultra HD Professional Multimedia Monitor **\$65.00**

A 28" 3840x2160 Ultra HD display that provides the highest resolution available in a desktop monitor. Delivering four-times the pixels of Full HD displays, the VX2880ml features 4K2K resolution, 1.07 billion colors, and a 50M:1 MEGA Dynamic Contrast Ratio for the ultimate in image color, clarity, and detail.

*4 Day Week

PRICES SUBJECT TO CHANGE WITHOUT NOTICE.
ALL PRICES ARE PER DAY, UNLESS OTHERWISE INDICATED.

MULTIMEDIA PROJECTORS

Canon

Canon REALiS WUX10 Projector **\$300.00**

3200 ANSI lumens

Canon's top of the line projector, delivering the highest resolution of any Canon projector. The world's first WUXGA (1920 x 1200) projector using LCOS technology, the WUX10 provides spectacular image quality, resolution, and color reproduction.



Canon REALiS SX6 Projector **\$300.00**

3500 ANSI lumens

The Canon Realis SX6 Multimedia Projector joins the Realis SX60, X600 and the award-winning Realis SX50 projector to create a full line-up.



Canon REALiS SX80II Projector **\$150.00**

3000 Lumens

Native SXGA+ Resolution (1400 x 1050), 1.5x Zoom Lens, HDMI Version 1.3 Deep Color, Network-ready RJ-45 Port. Ease of use and flexibility



CASIO PROJECTORS

CASIO
the unexpected **extra™**

XJ-A246 **\$100.00**

2500 Lumens, WXGA (1280 x 800), USB + Wireless included. Combines Laser and LED technology for amazing high brightness and can last up to 20,000 hours. The Slim is an earth-friendly, low maintenance, 5 pound projector with features such as a 2X Power Zoom Lens making it a great portable projector. The Slim Projector eliminates the need for a short life mercury lamp (typically 3000 hours) and is economical to operate.



XJ-H2650 **\$150.00**

Up to 3500 Lumens, WXGA (1280 x 800) & Automatic Brightness Adjustment. increased I/O connectivity, are DLP 3D Ready and have auto brightness adjustment to save power and reduce eye fatigue. Interactive Whiteboard ready (USB models only.)



PRICES SUBJECT TO CHANGE WITHOUT NOTICE.
ALL PRICES ARE PER DAY, UNLESS OTHERWISE INDICATED.

PROFOTO POWER PACKS



Pro 8A Air Power Pack

2400 Watt/Seconds (100-240VAC)

2 Independently Controlled Head Outlets

0.5 Second Recycle Time @ Full Power

Built-in Profoto Air Radio Slave

- AC cord & 2 sync cords.....\$100.00



Pro 7A 2400 Pack

2400WS, 3 lamphead connections, built-in slave and auto-bracketing. Slow, fast, and turbo recharging options allow recharging as fast as 1.45 sec. Multi-Voltage Capable.

- with AC cord, 2 PC cords\$65.00



Pro 7A 1200 Pack

1200 Ws version of Pro-7a Turbo recycling at full power in .8 sec. Consistent Color Temperature and exposure level at all power settings. Color Temperature control over 400 degrees K in 50K steps.

- with AC cord, 2 PC cords\$50.00

Our inventory is updated regularly - if you don't see it here, give us a call!

PROFOTO POWER PACKS, RECEIVER & LIGHTS



Pro Pro-B4 1000 Air Pack **\$125.00**

Supplies 1,000W/s of portable flash power in a compact, 21.6 lb package, with the most advanced long-life battery (LiFe) now available.

- Extra Batteries.....\$30.00
- Pro B Head\$25.00



Pro B2 Built –in Pocket Wizard Receiver

1200 Ws Battery Powered generator for use anywhere, anytime. Up to 200 full power flashes from a single battery cassette.

Fast recycling: 0.04-1.8 sec.

- Battery, battery charger & 2 sync cords.....\$90.00



Pro 7B 1200 Pack

1200WS asymmetrical battery powered pack. Accepts 2 lampheads, features built-in slave, fast recycling (2.6 sec.), short duration, and 250 flashes per battery charge.

- Battery, battery charger & 2 sync cords\$85.00
- Extra Battery\$15.00
- Pro7 Flash Head w/Zoom reflector\$25.00
- Pro7 Ring Flash\$35.00
- Lithium Battery\$30.00



Profoto Light Bars

- Small 2'\$100.00
- Medium 4'\$125.00
- Large 6'\$200.00

PRICES SUBJECT TO CHANGE WITHOUT NOTICE.
ALL PRICES ARE PER DAY, UNLESS OTHERWISE INDICATED.

PROFOTO STROBES & ACCESSORIES



- Pro Head with reflector\$25.00
- Pro Twin Head\$45.00
- Pro Ringflash bracket & reflector\$45.00
- Pro 7 Ring Flash 2\$50.00
- Fresnel Spot (Old Style)\$50.00
- Pro Fresnel Spot b/i Head\$85.00
- ProzoomSport (New style).....\$125.00



Profoto 7 Accessories

- Standard Umbrella\$8.00
- Profoto 5' Umbrella\$50.00
- Profoto 7' Umbrella\$60.00
- Profoto 8' Umbrella\$80.00
- Profoto Giant 180\$125.00
- Profoto Giant 300\$300.00
- Chelsea 7'.....\$15.00
- Head extension Cable – 5m\$10.00
- Head extension Cable – 10m\$12.00
- Pro Globe\$15.00
- Grid Set – 5, 10, 20 degrees (each) \$5.00
- 18" Grid – 10 degrees\$10.00
- 20" Grid – 25 degrees\$10.00
- Grid Holder\$5.00
- Gel Holder\$5.00
- 7" Grid Reflector\$5.00
- Narrow Beam Reflector\$6.00
- Softlight Reflector\$12.00
- Softlight Reflector\$12.00
- Barndoor\$8.00
- Snoot\$5.00
- Iris Diaphragm\$8.00
- Hardbox\$20.00



PRICES SUBJECT TO CHANGE WITHOUT NOTICE.
ALL PRICES ARE PER DAY, UNLESS OTHERWISE INDICATED.

PROFOTO POWER PACKS & STROBES



Acute 2R 1200 / 2400

- 1200WS Pack\$35.00
- 2400WS Pack\$45.00
- Acute 2 Head w/reflector\$25.00
- Acute 2 Ring Flash\$35.00

Profoto AcuteB2 600 Airs Lithium

- Battery, battery charger & 2 sync cord\$50.00
- Extra Battery\$20.00
- Acute B Head w/ Profoto Disc reflector\$20.00



Profoto D1

- 500 Monolight\$35.00 Ea.
- 1000 Monolight.....\$45.00 Ea.
- Profoto Air Remote\$20.00 Ea.

Profoto B1 500 AirTTL Battery Powered Flash

\$75.00



- Full E-TTL II with Canon Cameras
- 500W/s, 9-Stop Power Range
- Up to 220 Full-Power Flashes
- Flash Duration: 1/19,000 - 1/1,000 Sec
- Extra Battery\$15.00
- B1 Remote for Canon.....\$20.00
- B1 Remote for Nikon.....\$20.00



PRICES SUBJECT TO CHANGE WITHOUT NOTICE.
ALL PRICES ARE PER DAY, UNLESS OTHERWISE INDICATED.

STROBES



Broncolor Scoro A4 Pack

\$110.00



Power pack with 3 lamp outlets, controlled over 3 individual channels (like 3 power packs in one). Max. 3200 J, min. 3 J flash energy. Individual (asymmetrical) output distribution. Maximum control range: over 10 f-stop intervals or over full 11 f-stop levels in whole or 1/10 f-stop intervals. Very high repetitive precision. Automatic stabilisation of the colour temperature ECTC (Enhanced Colour Temperature Control) over the whole control range and up to 6 f-stops in asymmetrical mode. Internal discharge when the power is reduced. Photocell, infrared and RFS receiver for flash triggering (all can be switched off separately). Front panel with modern, dimmable, LCD menu system, with illuminated silicone keyboard resistant to scratches and LED displays. Selectable flash duration.

Samy's Camera **PRO RENTAL STAFF** will be happy to **CUSTOMIZE** rental packages upon request.

For long term rentals please inquire about **PACKAGE DISCOUNTS!**

STROBES



Broncolor Graft A4 Power Pack

\$85.00

3200WS, f/90-1/3 output, 1/125-1/6000 flash duration +0.1, recycle time 0.03-3.2 seconds. IR / Cord / Cell triggering asymmetrical / symmetrical distribution. 3 lamp head outlets with AC cord, 2 sync cords & sync ext.



Broncolor Graft A2 Power Pack

\$65.00

1600WS, f/64-1/3 output, 1/250-1/6000 flash duration +0.1, recycle time 0.03-1.6 seconds. IR/Cord/Cell triggering asymmetrical / symmetrical distribution. 3 lamp head outlets w/ AC cord, 2 sync cords & sync ext.



Broncolor Pulso Lampheads

Flashtubes have a UV absorption coating, quick change bracket, powerful low-noise cooling fans, halogen modeling light.

- Pulso G4 Head\$35.00
- Pulso 4 lamphead, 3200WS\$35.00
- Pulso F4 lamphead (focusable)\$35.00
- Pulso 4 Twin 2x3200WS\$50.00
- Para Ring Flash 4 Twin\$75.00
- Ring Flash.....\$45.00



Broncolor Move 1200L Pack

\$100.00

Built around the improved Move 1200 L battery powered pack. Two outlets distribute 1,200W/s of flash power either symmetrically or asymmetrically over 9.0 full stops and is variable in either 1/10 stop or 1 stop increments. Recycling time is a super-fast 0.02 to 0.9 sec. (min/max) with action-stopping flash durations of 1/1,000 / 1/350 sec (t0.5 / t0.1) at full power and as short as 1/20,000 / 1/8,500 at minimum power. With Battery & Charger

- Mobil LED Head\$35.00
- Extra Battery\$30.00
- RFS 2 Transmitter\$20.00

PRICES SUBJECT TO CHANGE WITHOUT NOTICE.
ALL PRICES ARE PER DAY, UNLESS OTHERWISE INDICATED.



BRONCOLOR STROBES



Siros 800 S

\$50.00

- Broncolor's new compact device combines unbeatable flash - and super-fast charging times with reliable and intuitive handling. At 400 and 800 joules, Siros is not only available in two output versions but also as a basic- or S-model.



Broncolor Lighting Control

- Pulso Spot 4 Projector
(3200WS max requires A4/4 pack)\$75.00
- Optical snoot for Pulso Spot 4
(100mm or 150mm)\$30.00



Pulso Flooter

This theatrical-type spot connects to any current lamphead & mimics a 340mm Fresnel spotlight. Focusable from 15°.

- Broncolor Pulso Flooter\$60.00



Para Umbrellas

- Para 88 FB Reflector.....\$150.00
- Para 88 HR Reflector\$200.00
- Para 133 Reflector\$175.00
- Para 133 HR Reflector\$225.00
- Para 177 (69.7" Diameter).....\$200.00
- Para 222 (87.4" Diameter).....\$300.00
- Para 330 FF (11' diameter)\$350.00

Para diffusers and grids available for an addition charge

BRONCOLOR STROBE ACCESSORIES



HMI FT1600 Kit

\$275.00

- Dimmable, provides constant colour at all times, and so is easy to mix with flash and daylight. The light is absolutely flicker-free and thus perfect for high-speed exposures.
- With four clamping levers (Para 88 HR and 133 HR) or a crank (Para 177 and 222) the reflectors can be unfolded first, independently of everything else. The focusing rod for that Para is then mounted and the lamp with its back reflector fitted at the front. The other end of the rod takes the lamp head with integral power supply unit – and... finished!

Broncolor Accessories*



- Pulso head extensions 16'\$10.00
- Pulso head extensions 32'\$15.00
- P70 Grid spot set (set of 3)
or Pulso Honeycomb grids (set of 3)\$24.00
- P45 Grid spot set (set of 3)\$30.00
- Barndoors 4 door\$10.00
- Snoots\$12.00
- Soft light reflector\$20.00
- Soft light grid\$15.00
- P70 Reflector (Pulso)\$10.00
- P45 Narrow angle reflector\$12.00
- P65 Reflector (Pulso 8)\$15.00
- P120 Wide angle reflector\$15.00
- Satellite Reflector\$55.00
- IRX Transmitter\$15.00
- RFS Transmitter\$20.00
- Lightbar 120\$125.00
- Lightstick\$50.00

*Stands & standard umbrellas available at no extra charge upon request.

Samy's Camera **PRO RENTAL STAFF** will be happy to **CUSTOMIZE** rental packages upon request.

For long term rentals please inquire about **PACKAGE DISCOUNTS!**

PRICES SUBJECT TO CHANGE WITHOUT NOTICE.
ALL PRICES ARE PER DAY, UNLESS OTHERWISE INDICATED.

DYNALITE STROBES



M2000WI Power Pack

- 2000WI 4 lamphead connections
with 2 sync and 1 sync extension40.00



M1000WI Asymmetrical Power Pack

- 4 lamphead connections, symmetrical / asymmetrical power distribution, 1 stop power variator, 2 sec recycling to full power, 4 way sync system, normal household AC sync, 2 channel internal infrared receiver and built in Wein slave.....30.00

Lampheads

- 2040 fan cooled lamphead (standard)
with head extension15.00
- 4040 Quad Head; 4 X 1000 Ws.
With 9" or 10" reflector.20.00
- 4080 Quad Head; 4 X 1000 Ws.
With 9" or 10" reflector.20.00
- Ring Flash.....35.00



Dynalite Accessories

- Head extension 15'\$5.00
- Head extension 25'\$8.00
- 10" reflector\$3.00
- Snoot (angle reducing ring)\$3.00
- Grid set (4) with Dyna Lite adapter\$10.00
- Grid adapter only\$5.00
- Barn Door set\$5.00



Dynalite XP800 Pure Sine Wave Inverter

- Portable AC Power Source with 1 battery\$50.00
- Extra batteries\$15.00



ION Lithium Inverter Pack

\$25.00

Allows you to take your studio strobes on the road or off the road without electricity and without noisy generators or inverters. Includes Pack, Battery and Charger.

- Spare Battery\$10.00

PRICES SUBJECT TO CHANGE WITHOUT NOTICE.
ALL PRICES ARE PER DAY, UNLESS OTHERWISE INDICATED.

SPEEDOTRON STROBES

Speedotron



4803 CX Power Pack

- 4800WS with 2 bank combo ratio plus 3 f/stop variator.
Power pack may be used with all Speedotron
lampheads. \$40.00

2403CX Power Pack

- 2400Ws 2 bank combo / ratio plus 3 f/stop variator.
Power pack may be used over a 50Ws to
2400WS range. \$30.00

1205CX Power Pack

- 1200 WS, perfect for the photographer who needs
power, but also shoots on location. 1 sec. recycle.
The unit is light weight with 2 stop power
variator and has variable modeling light
for each bank. \$22.00

Lampheads

- 102 Lamphead 2400 Ws \$15.00

106 Lamphead

5000Ws capacity, fan-cooled, 250W quartz model
lamp. Cables designed for use with 4803 power
supplies' special outlets.

- with 11.5" reflector \$20.00

105 Lamphead

9600Ws capacity, fan cooled, 250W quartz model
lamp. Four head cables allow either high power or
short flash duration applications.

- with 11.5" reflector \$25.00

Zoom Spot Projector

- With 3 position model lamp switch, 30-60° coverage
zoom spot with pattern holder, shaping arms, color gel holder,
5/8" light stand & built-in cooling fan. \$30.00

PRICES SUBJECT TO CHANGE WITHOUT NOTICE.
ALL PRICES ARE PER DAY, UNLESS OTHERWISE INDICATED.



SPEEDOTRON STROBES & ACCESSORIES

Speedotron



Accessories

- 25' head extension cord\$5.00
- 25' head extension cord for 106\$5.00
- Snoot (fits 7" reflector)\$2.00
- Barndoor 7"\$3.00
- Barndoor 11.5"\$5.00
- Gel holders (7", 11.5", 16")\$3.00
- 106 to standard outlet cable\$5.00

Grids

- 7" standard grid\$2.00
- 7" grid set (4) *\$8.00
- 11.5" grid set (2) *\$8.00
- 16" grid set (2) *\$8.00
- 20" grid 20°\$8.00

* for the new style reflector



Umbrellas

- 27" Shoot-thru or black backed\$3.00
- 44" Shoot-thru or black backed\$3.00
- 56" Shoot-thru or black backed\$4.00
- 72" Black backed\$6.00
- 7" Diffusion Umbrella\$15.00

Speedotron Digital Explorer\$50.00



Ringflash

- 1600WS Profoto ringflash wired for Speedotron
use w/camera bracket and reflector.....\$35.00

PRICES SUBJECT TO CHANGE WITHOUT NOTICE.
ALL PRICES ARE PER DAY, UNLESS OTHERWISE INDICATED.

SOFT LIGHTS



Mola Mantti Soft Light Reflector

Light Output: The Mola's efficiency is equal to or better than other modified parabolic reflectors, and thanks to a specially formulated reflector coating, Mola reflectors produce light of exceptional clarity. In use, Mola reflectors provide a slight warming effect to light. Internal and external diffusers are used to modify light temperature and dampen UV light output.



- Mola Beauty Dish 22" white surface.....\$35.00
- Mola Beauty Dish 28" white surface.....\$45.00
- Mola Beauty Dish 33.5" white surface.....\$55.00
- Mola Beauty Dish 43.5" white surface.....\$75.00
- Mola Beauty Dish 28" P-Surface\$65.00
- Mola Beauty Dish 33.5 P-Surface\$75.00
- Mola Beauty Dish 43.5 P-Surface.....\$95.00



Elinchrom Octabanks Octa 6' Beauty Umbrella

Super fast to set up, with the unique EL folding construction. 360° rotating system. All Indirect Light Banks are supplied with a Carrying Bag



- 27.5" Octobank for Profoto heads \$35.00 per day
- 36" Octobank for Profoto heads \$25.00 per day
- 39" Deep Octobank \$35.00 per day
- 53" Deep Octobank \$45.00 per day
- 72" Octobank for Profoto heads \$60.00 per day

QUANTUM FLASHES AND SLAVES



Q Flash T5dR Digital Flash Head



The Qflash 5d-R is the latest evolution in Quantum's proven Qflash portable flash line. The new 5d-R series used with Quantum's FreeXwire digital radio system, now support wireless control of all dedicated camera-flash functions-Manual, TTL, Auto, Auto-fill and TTL-Ratio-up to 500 ft. away. Qflash "Digital" model T5d & X4d are "dedicated" to the latest digital and film camera systems through its own QTTL through-the-lens dedicated exposure control.

- Q-Flash T2 (Auto and TTL) \$30.00



Turbo 3 Rechargeable Battery

\$20.00

A high voltage battery that works with most shoe- and handle-mount professional quality flash units and all Quantum Qflash, T-series and Trio/Pilot portable flashes. The Turbo 3 has the capacity to provide 1050 full-power flashes for shoe-mount and 750 flashes for handle-mount flash units.



Turbo Slim Compact

\$12.00

The Quantum Instruments Turbo SC Battery Pack ("S" for Slim and "C" for Compact) provides typical all-day flash shooting capacity like the standard Turbo, yet weighs less than 1 lb and fits easily in a shirt pocket.



Q Flash Trio (Nikon & Canon)

\$30.00

The new Qflash TRIO QF8 combines a Qflash head with built-in FreeXwire TTL radio and QTTL adapter for your digital camera. Slip it onto the camera hot-shoe, connect a Turbo with the included long power cable CQ8, and go.

Cables

- Nikon SB800/SB900 \$3.00
- Canon \$3.00

HENSEL
performing light

MONOBLOCKS



Hensel Expert D500 Monoblock

\$35.00

- Recycles in a lightening 0.1 – 0.8 sec.
And it does it at flash durations as short as 1/5800 sec.
- 8 f/stop range, down to 1/32 power in 0.1 stop increments, which makes it perfect for photographers using digital cameras
- Features Profoto Air radio, Hensel Strobe Wizard Plus and FREEMASK receivers



Hensel Integra Pro PLUS

\$25.00

- 500 watts • Multi-voltage (110-240VAC)
- 6-Stop Power Range



Hensel Power Max L Lithium Mobile Power Supply Kit

\$50.00

- Hensel Power Max L Lithium Mobile Power Supply (120VAC)
- includes Battery Pack for Porty L 600, L 1200 and Power Max L, Quick Charger for Porty L 600, L 1200 and Power Max L Lithium Batteries, Ballistic Nylon Satchel Case, Shoulder Strap, 2 x Ballistic Nylon Battery Pouches
- Extra Battery\$15.00

ARRITM

TUNGSTEN AND HMI

ARRI Tungsten Fresnels

Fresnels include barndoor, Gel frame scrims, & stand.

- 150: 150W fresnel\$12.00
- 300: 300W fresnel\$15.00
- 650: 650W fresnel\$20.00
- 1K: 1000W fresnel\$25.00
- 2K: 2000W fresnel\$35.00
- 5K: 5000W fresnel\$75.00
- Softlight: 2000W softlight\$40.00



ARRI HMI Fresnels

HMI Fresnels include compact head with ballast, head cable, barndoor, scrims, gel frame and medium roller.

- 1.2 K: 1200W\$150.00
- 2.5 K: 2500W250.00
- 4.0 K: 4000W350.00



PRICES SUBJECT TO CHANGE WITHOUT NOTICE.
ALL PRICES ARE PER DAY, UNLESS OTHERWISE INDICATED.

HMI LIGHTING

kobold



The Weatherproof Daylight System

DW800 Lots of light in wind and weather: DW 800 is a focusable multifunctional kobold 575/800 watt daylight fixture, and can be equipped with a wide range of reflectors to meet any need. The selected attachment transforms the lamp base into a fullfledged PAR, Open Face, or soft diffused source with the softbox adapter.

- DW 800 \$225.00
- DW 400 \$175.00

broncolor



HMI FT1600 Kit

\$275.00

- Dimmable, provides constant colour at all times, and so is easy to mix with flash and daylight. The light is absolutely flicker-free and thus perfect for high-speed exposures.
- With four clamping levers (Para 88 HR and 133 HR) or a crank (Para 177 and 222) the reflectors can be unfolded first, independently of everything else. The focusing rod for that Para is then mounted and the lamp with its back reflector fitted at the front. The other end of the rod takes the lamp head with integral power supply unit – and... finished!

Profoto



Profoto HMI

\$150.00

1.2 K: 1200 watt compact head with ballast, head cable, barndoor, scrims, gel frame.

- Profoto Daylight 800 \$225.00
- Profoto Tungsten 1000..... \$35.00

BRIESE
Lichttechnik



Briese HMI

Unlike an incandescent light source, where a resistive filament is used to create light, a daylight (HMI/MSR) lamp produces light from an arc (a continuous low voltage/high amperage spark). The light colour is controlled by gas mixture within the lamp, and in the instance of daylight simulation, a mixture of mercury vapour and metal halides render the light to a colour of 5500-6000 kelvin. HMI/MSR lamps offer extremely high luminous efficiency and are cooler running than their tungsten equivalent.

- 1.2 K..... CALL
- 2.5 K..... CALL

PRICES SUBJECT TO CHANGE WITHOUT NOTICE.
ALL PRICES ARE PER DAY, UNLESS OTHERWISE INDICATED.

HMI LIGHTING

K 5600
LIGHTING

Motion requires continuous light, and digital loves daylight. Our 200, 400 & 800W Jokers deliver flicker-free daylight to capture both still and video – without re-lighting. Jokers look and perform just like flash heads. Add the Crossover Adapter and they fit into the reflectors you've been using for years. You can easily branch out to cinema-style lighting with our Beamers, Soft Tubes and many other light shapers



Joker Bug 200

\$125.00

The Joker-Bug 200 has an output comparable to 750/1000 watt quartz fixture, but with a power draw of only 3 amps. This unit has become a standard for small interiors, interviews, documentaries and car shots.



Joker Crossover 400

\$175.00

The Joker-Bug 400 output is comparable to a 1500/2000W quartz fixture, but with a power draw of only 5.5 Amps. It's powerful enough to make a difference in daylight interiors even through diffusion materials and light banks.



Joker Crossover 800

\$225.00

The Joker-Bug 800 fixture throws a beam of light of 5235 foot-candles 1.5 feet in diameter from 20 feet with the Spot lens. It throws a beam of 164 foot-candles 16 feet in diameter from 20 feet with the Super Wide lens

The BIG-EYE

\$75.00

The BIG-EYE Joker accessory will turn any Joker-Bug system into a Giant Focusable Fresnel Beauty light. This 18K style (24" diameter) polymer Fresnel lens will deliver: When you need a bigger, harder source as a front, but you do not want the source to be too small and therefore too harsh



Joker Bug 1600W Zoom Beamer Kit **\$250.00**

Includes: Head w. 9' cable, clear glass beaker, safety wire, Lamp 5600K, 750 Hrs SE, UV Stop, Electronic Power Supply, 110/240V, 50/60Hz, 25' Extension Cable, Zoom Beamer Optical Accessory, Scrim Bag 1600W Joker Zoom, 2ea., Full Double Scrim 1600 W Zoom - 12", Full single Scrim 1600W Zoom - 12", Four Leaf Barndoor, Frosted Glass UV Protection Beaker

PRICES SUBJECT TO CHANGE WITHOUT NOTICE.
ALL PRICES ARE PER DAY, UNLESS OTHERWISE INDICATED.

BRIESE



Focus Umbrellas (for Flash & HMI)

- 77 cm (2.3 ft.) CALL
- 100 cm (3.3 ft.) CALL
- 140 cm (4.6 ft.) CALL
- 180 cm (5.9 ft.) CALL
- 220 cm (7.7 ft.) CALL
- Briese Head adapted to Profoto..... CALL
- Briese Head adapted to Broncolor CALL

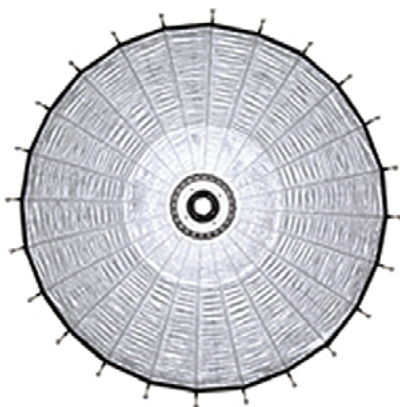


Briese Light tools and Fabric Grids

- 77 cm (2.3 ft.) CALL
- 100 cm (3.3 ft.) CALL
- 140 cm (4.6 ft.) CALL
- 180 cm (5.9 ft.) CALL
- 220 cm (7.7 ft.) CALL

Briese HMI

- 1.2K Ballast CALL
- 2.5K Ballast CALL



PRICES SUBJECT TO CHANGE WITHOUT NOTICE.
ALL PRICES ARE PER DAY, UNLESS OTHERWISE INDICATED.

KINOFLO LIGHT BANKS



Kino Flo Light Banks

Features daylight or tungsten balanced fluorescent tubes for film, video or still.

- Parabeam 400 \$100.00
- 48" x 4 Tube Bank, * \$75.00
- 24" x 4 Tube Bank* \$65.00
- 24" x 4 Tube DIVA Lite Ultra-Brite
55W Bank* \$100.00
- Extra Bulb \$5.00 Ea.

*with yoke, stand and shipping case

Kino Single 4' Fixture

\$35.00

Kino Barfly 4000 Kit

\$100.00



Tegra 4Bank Universal Kit

\$100.00

Kino Flo's Tegra 4Bank Universal fluorescent fixture combines the features of their wildly popular Diva-Lite and the 4Bank to bring you a lightweight fixture with universal, onboard dimming and an output equivalent to 1,000 tungsten watts.



PHOTOFLEX STARLIGHT OCTA KIT

Our OctoDome nxt is designed to be used with the StarLite continuous light source. Now videographers and hot-light photographers can take advantage of this versatile and dependable lighting tool.

- The StarLite® OctoDome® nxt: 3 foot kit \$60.00
- is an all-inclusive lighting system including:
- 2-3 foot OctoDome nxt
- 2-StarLite QL with standard components
- 4-lamps (2-500w; 2-1000w)
- 2-Medium LiteStand
- 1-TransPac® GigBag

PRICES SUBJECT TO CHANGE WITHOUT NOTICE.
ALL PRICES ARE PER DAY, UNLESS OTHERWISE INDICATED.

TUNGSTEN HOT LIGHTS



Open Faced Focusing Lights

Includes light with stand and spare lamp.

- 650W Omni.....\$12.00
- 1000W DP.....15.00

Fill Light

Includes light with stand and spare lamp.

- 750W Totalight.....\$12.00

CaseLite 4

- Daylight balanced florescent fixture – compact, perfect for travel.....\$50.00

Lowel III Light Kit

\$45.00

- Includes: 2 Totalight, 1 Omnilight with borndour, 2 Umbrellas, 1 Gel holder, 3 Stands

Lowel Light Control Accessories

- Four-way barndoors (Omni, DP, M/R Softlight\$5.00

LED LIGHTING

Lowel Blender LED

\$35.00

Lowel Prime 200 LED Light

\$75.00

A 17.7 x 14.9 x 3.5" panel that gives you wrap-around light with a crisp edge and a color balance which blends seamlessly with indoor ambient light.



Fiilex Flexjet P200

\$60.00

Fiilex P360 3 Light Kit

\$125.00

Gives you the ability to create interview or traditional 3 point lighting set ups. A powerful high quality specular light. It reveals color with great accuracy, and gives you control over the light quality.

Fiilex Q1000 8" Fresnel LED

CALL

Revolutionizes photo and video work by combining intense power, exceptional light quality, enhanced weather-resistance, and portable power options in one remarkable light. Maintaining the same color spectral versatility of the award-winning Q500, the Q1000 boasts a color tuning range of 2800K-6500K.

PRICES SUBJECT TO CHANGE WITHOUT NOTICE.
ALL PRICES ARE PER DAY, UNLESS OTHERWISE INDICATED.

LIGHT BANKS



Chimera Super Pro Plus

Recessed front screen, large hook & loop-sealed rear opening

- Extra Small (16" x 22")
- Small (24" x 32").....\$10.00
- Medium (36" x 48").....\$15.00
- Large (54" x 72").....\$20.00

Stripbanks

- Small Strip (9" x 36")\$10.00
- Medium Strip (14" x 56")\$15.00
- Large Strip (21" x 84")\$20.00

Quartz Bank

Ultra heat resistant

- Small (24" x 32").....\$30.00
- Medium (34" x 46").....\$40.00
- Large (54" x 72").....\$50.00

Daylight JR/Video Pro

Increased depth and heat-resistant material.

- Small (16" x 22").....\$20.00
- Medium (24" x 32").....\$25.00
- Large (36" x 48").....\$40.00

Chimera Speed Rings

SPECIFY USAGE: Broncolor, Comet, Dynalite,
Hensel, Lumedyne, Norman, Profoto,

Speedotron, Arri, Lowel, etc... ..\$3.00

Chimera Grid Fabrics

- Extra Small.....\$15.00
- Small\$15.00
- Medium.....\$25.00
- Large\$30.00

Chimera Grid Fabrics (STRIP)

- Small\$15.00
- Medium.....\$25.00
- Large\$30.00

PRICES SUBJECT TO CHANGE WITHOUT NOTICE.
ALL PRICES ARE PER DAY, UNLESS OTHERWISE INDICATED.

POCKET WIZARD REMOTE TRIGGERS

PocketWizard™



Pocket Wizard / Pocket Wizard Plus / Transceivers

Has a range of 800', & 4 or 16 channels. Can be used to trigger a wide range of cameras, strobe units and power packs.

Please specify.

- Transmitter\$10.00
- Receiver\$10.00
- Cables (Hasselblad/Mamiya/Nikon)\$7.00
- Transceiver\$10.00

Pocket Wizard PLUS III

\$12.00 / day

- Transmitter\$12.00
- Receiver\$12.00
- Cables (Hasselblad / Mamiya / Nikon).....\$7.00

Pocket Wizard Max 32 channel system

- Transmitter\$15.00
- Receiver\$15.00
- Cables (Hasselblad / Mamiya / Nikon).....\$7.00

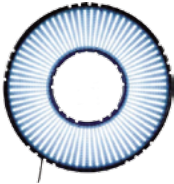
LITEPANELS



Litepanels 1 X 1

\$75.00

Battery & AC powered 1x1 Litepanels' lightweight, ultra-flat profile 1x1 is the most versatile production light ever built. Designed for quick set up and operation, the fixture mounts easily over-head—or elsewhere—to bathe a studio in soft, directional, luminous output. Its modular housing can be combined into 2'x2' and 4'x4' multi-panel configurations to fit a wide range of jobs. What's more, the 1x1's optional snap-on battery allows for location shooting without generators or power cables. (Battery extra)



Litepanels Cinema Ringlite

\$200.00

Ringlite draws just 70 watts. Power is provided by an AC/DC switching power supply, which operates from 90-260VAC. The optional DC power supply allows the unit to run from a standard battery belt or other DC power sources.

- Mini Ring Light\$150.00



Litepanels Micro and Micro Pro

The Litepanels Micro features a conveniently located integrated dimmer dial at the top of its housing to instantly dim the light anywhere from 100% to 0, with minimal color shift. Output is flicker free and heat free and remains consistent. For additional control, a flip-down filterholder allows for work with the included color/ diffusion gels.

- Litepanels Micro: 3.3" W x 3.3" H x 1.5" D\$25.00
- Litepanels Micro Pro: 5.5" W x 4" H x 1.5" D. \$35.00

LED LIGHTS

limelite®

Limelite Mosaic Bi-Color LED Panel with Barndoor

\$50.00

An ideal solution for multi-location productions with mixed light balances. Shift from 2800K or 5600K or anywhere in between with two simple push buttons. Instead of filtering a source's fixed color temperature, you can input the precise look and temperature that you want. Matching other Mosaic sources is easier too, thanks to the highly consistent nature of LEDs.

- Battery.....\$25.00

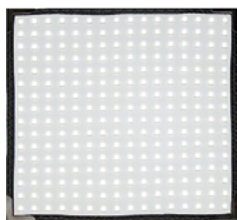


westcott.

Flex Daylight LED

\$40.00

A unique 10 x 10" array of 256 95-CRI LEDs that is just 1/32" thick inside its 1/4" bendable black border. Mold it into an arc for product photography for true "wrap-around" lighting or shape it into a cylinder for long thin highlights in reflective objects. The Flex will hold its form however you twist it thanks to integrated pliable wire in the frame. And at 1/4" maximum thickness, it will fit where most light sources simply can't.



LISTEC™
teleprompters

TELEPROMPTERS

PW-04 Smartphone Teleprompter

\$75.00

A 4.0" teleprompter that attaches to your small video camera via one of the 5 included lens adapter rings. Professional quality prompting, formerly available only in large studios is now available in the field or on the road in a handheld model.



PW-10DV

\$125.00

Turns your iPad® or Tablet into a Professional Teleprompter. The most versatile option for tablet teleprompting, features an adjustable camera mount allowing for virtually all shapes and sizes of DSLR and Video cameras.



PRICES SUBJECT TO CHANGE WITHOUT NOTICE.
ALL PRICES ARE PER DAY, UNLESS OTHERWISE INDICATED.

SOUND BLIMPS



Jacobson Sound Blimps

Housing for professional 35mm Canon and Nikon cameras which effectively eliminates the noise created by their operation.

Canon

- 1-DS\$75.00*
- 5D Mark II\$75.00*
- 50D.....\$75.00*

Nikon

- D3.....\$75.00*
- D300.....\$75.00*

- Canon or Nikon Tubes\$5.00
- Canon or Nikon Zoom Tubes.....\$10.00

KENYON GYRO STABILIZERS



For light plane and helicopter operation of still, motion picture, and video cameras.

KS-4 Gyro

\$60.00*

Weight 34 oz. For cameras up to 8 lbs. Complete with KP4 battery pack 11 5V 400 Hz inverter charger and case.

KS-6 Gyro

\$80.00*

Weight 52 oz. For cameras up to 12 lbs. Includes: 2 KP6 battery pack 115V 400 Hz inverters 2 chargers and case.

KS-8 Gyro

\$100.00*

Weight 82 oz. For cameras up to 30 lbs. Includes: 2 KP6 battery pack 115V 400 Hz inverters 2 chargers and case.

Kenyon XLR Battery Pack

\$25.00*

KS-4x4 Gyro

\$120.00*

Weighs 4.8 lbs. Stabilizes equipment in the 5-8 lb range. Full 3 axis of stabilization.

KS-6x6 Gyro

\$175.00*

Weighs 6.8 lbs. Stabilizes equipment in the 7-11 lb. Can run up to 2 hours on fully charged Ken Lab battery pack



PRICES SUBJECT TO CHANGE WITHOUT NOTICE.
ALL PRICES ARE PER DAY, UNLESS OTHERWISE INDICATED.

CENTURY VIDEO ADAPTERS

Century



Century Adapters

Every Century Film Product is intelligently designed for unmatched optical perfection coupled with user friendliness. You'll feel the difference when you focus a lens or withdraw a filter. Each piece meshes perfectly with the next. In all our products, Century takes that extra step, making for a better shooting experience.

- 16:9 Widescreen adapter\$25.00
- 3X Ultra Fisheye\$50.00
- 65 W/A Converter\$30.00
- 6X DVX100 Converter\$30.00
- 6X XL1s Converter\$30.00
- 7x Converter\$50.00
- Standard Fisheye\$30.00
- 75x For HVX\$50.00
- 1.6 TC for DVX/HVX/XHA1\$50.00
- 75x HD F/EX-1\$50.00
- 65x HD F/FX-7\$50.00
- 3x HD F/FX-7\$50.00

matthews
STUDIO EQUIPMENT



SLIDERS

- Matthews DC Slider..... **CALL**
Used for sliding camera systems in multiple angles. It also works as a mini-jib arm and can transform into a 6' tower. Equipped with a counterbalance mechanism, the DC-Slider offers a stable shooting platform even when set in extreme angles. A total of 26 lb. counterweight allows you to perfectly stabilize a camera system weighing up to 22 lb on the arm.



- Cinevate Atlas 10 FLT 26" Slider\$40.00
- Cinevate Atlas 10 LTS 35" Slider\$50.00
- Cinevate Atlas 30 47" Slider.....\$55.00
- Cinevate Atlas 200 Slider.....\$80.00

Kessler
Innovative Tools for Filmmakers



- Kessler Philip Bloom Series
Pocket Dolly Slider 3'.....\$75.00
- Kessler Cineslider 5'\$150.00
- Kessler Pocket Jib Pro\$115.00
- Elektra Drive Motor for Cineslider 5'\$25.00
- Elektra Drive Basic Controller.....\$25.00

PRICES SUBJECT TO CHANGE WITHOUT NOTICE.
ALL PRICES ARE PER DAY, UNLESS OTHERWISE INDICATED.

MICROPHONES & RECORDERS



Samson P. A. System

- XP308i PA System.....\$60.00
- XP510i PA System.....\$75.00



- Evolution Wireless LAV.....\$45.00
- Evolution Wireless Handheld Mic\$50.00
- ME66 Shotgun Mic\$25.00
- MKE400 Shotgun Mic.....\$20.00
- MKE600 Shotgun Mic.....\$25.00



- K-Tek Carbon Fiber Boom Pole.....\$30.00
- K-Tek Shuck Mount\$10.00
- XLR-25' Cord.....\$5.00



- NTG-2 Shotgun Mic.....\$25.00
- Videomic Pro Shotgun Mic.....\$20.00
- Stereo Videomic Pro\$25.00



- H6 Handy Recorder\$50.00
- A portable handheld recorder and USB audio interface that features an interchangeable microphone system.
- Mic Accessories for H6\$10.00



- Tascam DR680 Recorder\$75.00
- A professional-quality portable field recorder that allows you to record and edit multiple tracks of audio, ideal for musicians, filmmakers, journalists, and more. The DR-680 allows you to record up to 8 tracks onto widely-available SD/SDHC flash memory cards at rates up to 24-bit/96kHz.



- FP33 Mixer.....\$50.00
- A field mixer rugged enough to handle the elements and flexible enough for professional working environments. It is suitable for electronic news gathering (ENG), field production (EFP), film, television and recording for sound design.

PRICES SUBJECT TO CHANGE WITHOUT NOTICE.
ALL PRICES ARE PER DAY, UNLESS OTHERWISE INDICATED.

EXPOSURE METERS

Kenko



KFM1100 Light Meter

\$15.00

For most people the minimal, clearly marked buttons will make using the meter second nature in very little time. The side of the meter only has 3 buttons, the largest is for taking measurements, the other two set on a rocker are UP/DOWN input buttons for changing F no., shutter speed or ASA/ISO. This simple, easy-to-use ergonomic design feels comfortable in your hand and its logical control layout will please photographers who want to concentrate on the subject, not their equipment.

KFM2100 Light Meter

\$25.00

The KFM-2100 will read ambient and flash light. For flash, the meter has settings for both cord and non-cord triggering. An integrated spot meter makes spot readings in both ambient and flash modes fast and easy with no need to stop and add accessories.

MINOLTA



Minolta Color Meter IIIF

\$20.00

Takes ambient and flash (cord/non-cord) readings, has an analyze function to subtract ambient light, and measures for Daylight, Tungsten A, or Tungsten B films. Users can store up to 9 personal correction values.

Samy's Camera **PRO RENTAL STAFF** will be happy to **CUSTOMIZE** rental packages upon request.

For long term rentals please inquire about **PACKAGE DISCOUNTS!**

PRICES SUBJECT TO CHANGE WITHOUT NOTICE.
ALL PRICES ARE PER DAY, UNLESS OTHERWISE INDICATED.

EXPOSURE METERS

SEKONIC



Flashmeter L-358

\$16.00

Revolutionary new meter with features like: simultaneous reading of flash and ambient, unlimited number of cumulative flash exposures, nine memory banks, allweather design and complete range of cine frame speeds from 2 to 360 fps.



Zoom Master L-508 / L508C (Cine-unit)

\$20.00

This meter has all of the features of the original 508 (without EV read out) and also includes special motion picture and video functions. The 508-C (cine unit) can read Foot Candles, Foot Lamberts and LUX. Cine version can be programmed for shutter angle and has an electronic lock for frame rates from 2 to 360 fps.



Sekonic Prodigy Color C-500R

\$35.00

PRODIGI COLOR C-500 and C-500R, Sekonic gives photographers the world's only photographic color meter designed to read spectral sensitivity of both color film and CCD and CMOS sensors used in today's digital still and DV cine cameras.

PRICES SUBJECT TO CHANGE WITHOUT NOTICE.
ALL PRICES ARE PER DAY, UNLESS OTHERWISE INDICATED.

TRIPODS AND HEADS

bogen



- Large tripod\$25.00
- Medium tripod\$18.00 - \$20.00
- Small tripod\$15.00
- Monopod\$8.00
- Dolly Wheels\$15.00 - \$25.00

GITZO



- Large tripod\$35.00
- Medium tripod\$25.00
- Small tripod\$20.00
- Large Monopod\$8.00
- Medium Monopod\$5.00
- Large Side Arm\$12.00
- Small Side Arm\$10.00

Special Heads

- Monoball with quick release plate\$10.00
- Gitzo Fluid Head\$15.00

CARTONI
PROFESSIONAL CAMERA SUPPORT



VIDEO TRIPODS AND HEADS

Cartoni F102 Focus Aluminum Tripod System - consists of: F100 Focus Fluid Head, A500 Camera Mounting Plate, B464 Telescoping Pan Arm, A304 2-Stage Ultra-Light Tripod, P730 Mid-Level Spreader, and B410 Soft Carrying Case.

- F102 system.....\$50.00

FLUID HEADS



Manfrotto



- 501 HD\$15
- 502 HD\$20
- 504 HD\$25
- 509 HD\$50

PRICES SUBJECT TO CHANGE WITHOUT NOTICE.
ALL PRICES ARE PER DAY, UNLESS OTHERWISE INDICATED.

FLUID HEADS

oconnor



1030B Fluid Head

CALL

Supports up to 39 lbs, accepts large QR plate.



1030D Fluid Head

CALL

Ultimate 1030D Fluid Head for cameras up to 30 lbs.



1030DS Fluid Head

CALL

Ultimate 1030D Fluid Head for cameras up to 41 lbs.



2060HD Fluid Head

CALL

Ultimate 1030D Fluid Head for cameras up to 83 lbs.



Cine HD Legs

CALL

maximum rigidity for head and camera loads up to 309 lbs

sachtler



VIDEO TRIPODS & HEADS

Sachtler DV 4 II Pro Video Fluid Head with a 75mm Ball Base Maximum Load 16.2 lbs.

- FSB6T System \$50.00
- DV-4 \$50.00

matthews
STUDIO EQUIPMENT

DOLLYS



Doorway Dolly Round-D-Round

\$150.00

Designed with a wheel base of 28.25" without an extended axle. Overall length reaches 51" with a platform size of 27.5" x 41.5". The two side boards add 10" each. Ground clearance is 9" or 3" when inverted. Load capacity is 800 lb.



Dana Dolly Uni Kit

\$100.00

Easy to set up, can be used with a variety of track options, and can be supported using standard junior stands, apple boxes, or the ground, whatever the shot requires.

PRICES SUBJECT TO CHANGE WITHOUT NOTICE.
ALL PRICES ARE PER DAY, UNLESS OTHERWISE INDICATED.



LIGHT MOUNTING ACCESSORIES

- Stand Adapters\$3.00
- Baby sidearm\$3.00
- Junior sidearm\$3.00
- Wall plates\$2.00
- Spud adapter\$1.00
- Magic arm\$5.00
- 2-1/2" grip head for matth clamp\$2.00
- Swivel U hook for seamless\$2.00
- Lowel pole (telescoping stand extension/crossbar) \$2.00
- Auto-Pole\$5.00
- Super clamp with stud\$5.00
- Super clamp with 6" extension arm (low arm)\$5.00
- Camera Mount\$2.00
- Super clamp with magic arm & camera mount . \$10.00
- Flex-arm for super clamp\$2.00

STINGERS

Grip Accessories

- 25' AC Extension Cord\$5.00
- 50' AC Extension Cord\$7.00
- 100' AC Extension Cord\$9.00
- AC Twist Lock to 2x Splitter\$5.00
- AC Twist Lock to Edison\$5.00
- 3-Fer AC Adapter\$3.00

*All heavy duty extension cords will have an addl. \$2.00 charge



FOG & WIND MACHINES

Wind Machines

- Reel Efx II\$50.00

Fog Machines*

- Hazer EFX DF50.....\$100.00
- Rosco Vapour\$50.00



*Fog Machines do not come with fog fluid.

Regular and scented fluid available for purchase

PRICES SUBJECT TO CHANGE WITHOUT NOTICE.

ALL PRICES ARE PER DAY, UNLESS OTHERWISE INDICATED.

REFLECTORS, BACK DROPS & SCRIM JIMS



Westcott Reflectors

Westcott/Photoflex Litedisc folding cloth reflector, silver, gold, sun, white, black or silk



- 32"\$5.00
- 42"\$6.00
- 52"\$7.00
- 4' x 4' Silk\$15.00
- 6' x 6' Silk\$20.00
- Litedisc strong arm (holds disc to stand)\$3.00

Westcott Scrim Jim

Strong collapsible diffusion/reflector system.
Fabrics edged with elcro.



- 42" x 42"\$15.00
- 42" x 72"\$20.00
- 72" x 72"\$25.00

Kits with diffusion, silver/white & gold/white panels.

- 40" light tent\$20.00
- 60" light tent\$30.00



California Sunbounce

Kits include side & cross bars, case and 3 fabrics.



- 3' x 4'\$25.00
- 4' x 6'\$35.00
- 6' x 8'\$45.00

Sunswatter

Kits include side & cross bars, case and 3 fabrics.

- 4' x 6'35.00
- 6' x 8'45.00



CHROMA-KEY

Avenger 12x12 Chroma-Key

- Digital Green\$50.00
- Green\$50.00
- Blue\$50.00

PRICES SUBJECT TO CHANGE WITHOUT NOTICE.
ALL PRICES ARE PER DAY, UNLESS OTHERWISE INDICATED.

GRIP BOOMS & STANDS



Booms and Stands

- Mini Boom\$10.00
- Super Boom\$25.00
- Mega Boom.....\$50.00

C Stands

- 20" Double Riser w/grip head & single arm\$5.00
- 40" Double Riser w/grip head & single arm\$5.00

Also available in turtle and sliding leg variation

Roller Stands

- Baby Roller Stand\$5.00
- Hi-Baby Roller Stand\$5.00
- Junior Roller Stand\$10.00
- Medium Roller Stand\$10.00
- Hi-Hi Roller Stand\$12.00

Cutters

- Medium 18" x 48"\$4.00
- Large 24" x 72"\$5.00

Flags / Silks

- Small 12" x 18"\$3.00
- Medium 18" x 24".....\$4.00
- Large 24" x 36"\$4.00
- Large 30" x 36"\$4.00
- Extra Large 48" x 48"\$8.00

Nets / Scrims

- Small 12" x 18"\$3.00
- Medium 18" x 24".....\$4.00
- Large 24" x 36"\$5.00
- Large 30" x 36"\$5.00
- Extra Large 48" x 48"\$8.00

Butterflies and Overheads

- 6' x 6' silk, solid, net, or griffolyn\$15.00
- 6' x 6' breakdown frame\$15.00
- 6' x 6' travel frame\$12.00
- 8' x 8" frame\$20.00
- 12' x 12' silk, solid, net, or griffolyn\$20.00
- 12' x 12' travel frame\$20.00
- 20' x 20' silk, solid, net, or griffolyn\$50.00
- 20' x 20' travel frame\$35.00

PRICES SUBJECT TO CHANGE WITHOUT NOTICE.
ALL PRICES ARE PER DAY, UNLESS OTHERWISE INDICATED.

GRIP BOOMS & STANDS



Background Support

- JTL back stand support\$15.00

Stands & Booms

- Mini-matth Boom only\$10.00
- Bogen super boom w/stand, counterweight\$25.00
- Bogen mega boom\$50.00

Light Stands

- Backlight stand with telescoping pole.....\$3.00
- Regular stand, 8-1/2'.....\$3.00
- Tall stand, 12'\$4.00

C-Stand

- Century, 40" double riser, 10'.
with grip head & single arm..... \$5.00
- Grip head only\$2.00
- Gobo extension arm only, 40"\$2.00
- Mini extension arm, 20"\$2.00

Also available in turtle and sliding leg variations.

*Our inventory is
updated regularly -
if you don't see it
here, give us
a call!*

GRIP BOOMS & STANDS



Overhead Roller Stands

- Medium hi-roller stand 14'\$10.00
- High hi-roller stand 20'\$12.00
- Baby roller\$5.00
- Baby beefy\$5.00
- Baby beefy triple riser rocky mountain leg\$8.00
- Junior spud\$1.00

Counterweights

- Sandbag 15 lb.\$2.00
- Sandbag 25 lb.\$2.00
- Sandbag 35 lb.\$2.00
- Shotbag 15 lb.\$2.00
- Shotbag 25 lb.\$2.00
- Flyaway sandbags\$2.00

Apple Boxes

- Full (8" x 12" x 20")\$4.00
- Half (4" x 12" x 20")\$4.00
- Quarter (2" x 12" x 20")\$4.00
- Pancake (1" x 12" x 20").....\$4.00

Clamps

- A clamps, 1", 2", 3" (each)\$1.00
- C clamps\$3.00
- Bogen Super clamps\$5.00
- Matth clamps\$3.00
- Strobe mounting C clamp\$5.00

Flags/Silks

- Small 12" x 18"\$2.00
- Medium 18" x 24"\$3.00
- Large 24" x 36" / 30" x 36"\$4.00
- Extra large 48" x 48"\$8.00

GRIP BOOMS & STANDS

Butterflies and Overheads

- 6' x 6' silk, solid, or single net \$15.00
- 6' x 6' frame only \$15.00
- 6' x 6' breakdown frame \$15.00
- 8' x 8' breakdown frame \$20.00
- 8'x8' solid, or silk..... \$20.00
- 8'X8' net, single double or \$20.00
- 12' x 12' frame only, with 1 pair hangers..... \$18.00
- 12' x 12' silk, solid or griffolyn \$20.00
- 12' x 12' net, single or double \$20.00
- 20' x 20' deluxe two-stand frame only \$35.00
- 20' x 20' silk or solid \$50.00

Cutters

- Small 10" x 42" \$2.00
- Medium 18" x 48" \$3.00
- Large 24" x 60"/24" x 72" \$4.00

Nets/Scrims

- Small 12" x 18" \$2.00
- Medium 18" x 24" \$3.00
- Large 24" x 36" / 30" x 36" \$4.00

Reflectors

- Matthboard 40" x 40" reflector silver or gold ... \$10.00

Cucoloris (Wood)

- 18" x 24" \$6.00
- 24" x 36" \$8.00
- 48" x 48" \$12.00

HONDA PORTABLE GENERATORS

HONDA
Power
Equipment


Honda EU1000

\$45.00

- 1.8 HP, Single Cylinder,
- Overhead Valve, Air Cooled
- Displacement: 50 cc
- AC Output: 120V
- 1000W max.(8.3A)
- 900W rated (7.5A)
- Receptacles: 15A 125V Duplex
- NEMA Plug Number: 5-15P
- DC Output: 12V, 96W (8A)



Honda EU2000i

\$55.00

- 3.5 HP, Single Cylinder,
- Overhead Cam, Air Cooled
- Displacement: 98.5 cc
- AC Output: 120V
- 2000W max.(16.7A)
- 1600W rated (13.3A)
- Receptacles: 20A 125V Duplex
- NEMA Plug Number: 5-20P
- DC Output: 12V, 96W (8A)

NOTES:

- When using modeling lights, subtract 2.5 amps per 250 watt modeling lamp used from the generator's total capacity.
- HMI lights require crystal-sync generators to maintain flicker-free operation.
- Please call for additional information

PRICES SUBJECT TO CHANGE WITHOUT NOTICE.
ALL PRICES ARE PER DAY, UNLESS OTHERWISE INDICATED.

HONDA HEAVY DUTY GENERATORS

HONDA
Power
Equipment

Honda ES6500 Crystal-Sync Generator

\$175.00

- 12 HP with an electrical starter,
- 6500 Watt/ 120V-240V/ 65 Amps.
- Operates up to 5 hours on 4.2 gallons of gas.
- Provides surge protection for use with HMI lighting and other electronics.
- Dry weight: 284 Lbs.



Honda B11000

\$110.00

- 20 HP 11,000 watt/120-240V/79 amps.
- Operates up to four hours on 6-9 gal of gas (not include).
- Dry weight: 403 lbs.



Honda EM7000IS

\$125.00

- 13 HP Single cylinder overhead valve
- Air-cooled
- Displacement: 389 cc
- AC Output: 120/240V
- 6500W max. (54.1/27.1A)
- 5500W rated (45.8/22.9A)

Receptacles: 20A 125V Duplex, NEMA Plug Number: 5-15P or 5-20P 30A 125V Locking Plug, NEMA Plug Number:

L5-30P, 30A 125/250V Locking Plug NEMA Plug Number: L14-30P

MAGLINER®

MAGLINER CARTS



Magliner Carts

\$30.00

Magliner Beach Carts

\$45.00

Ruxxac Fold It Cart

\$15.00
INOVATIV

INOVATIV CARTS



Scout 37

\$125.00

The Scout, is an ultra lightweight compact cart specifically designed for the world traveler in mind. Works in almost any scenario.

Echo 48

\$175.00

With a rolled top shelf for less wrist fatigue and adding a low profile drawer, the Echo presents itself with a cleaner organized working space.

- Sidewinder Vega Mount \$40.00/Day
- Baby Pin Mount \$25/Day

PRICES SUBJECT TO CHANGE WITHOUT NOTICE.

ALL PRICES ARE PER DAY, UNLESS OTHERWISE INDICATED.

REQUIREMENTS FOR RENTING

- ◆ **IDENTIFICATION:** Valid Driver's License or Passport (picture ID).
- ◆ **COLLATERAL DEPOSITS:** (a.) Credit Card deposit for the full replacement value of equipment, or (b.) Cash deposit for the full replacement value of equipment, or (c.) Certificate of Insurance (see certificate of insurance requirements.). (c.) A credit card is required to cover any deductible and to guarantee payment.
- ◆ **ACCEPTED CREDIT CARDS:** Visa, MasterCard, American Express or Discover Card. Note: We discourage the use of check cards or debit cards for collateral purposes.
- ◆ **PHONE ORDERS:** Cardholder must fill out terms and conditions in person at any of our locations to authorize an agent to pick up.
- ◆ **CHECKS:** **Samy's Camera does not accept checks for collateral deposits.**
- ◆ **INSURANCE:** We require insurance on all orders valued over \$10,000.00 or credit card to cover deposit.
- ◆ **CERTIFICATE OF INSURANCE REQUIREMENTS:**
- ◆ (a.) Samy's Camera must be named the Loss Payee, as well as additionally insured: (Use the 431 South Fairfax Avenue, Los Angeles, CA 90036 address). (b.) General Liability Coverage must include, explicitly, miscellaneous equipment, rented equipment, or rented and leased equipment, as well as property covered off premises. (c.) Policies with Unattended Vehicle Disclaimers will NOT be accepted. (d.) All certificates and attached forms are subject to the verification and approval process by the management before the equipment is released. All certificates and attached forms need to be approved 24 hrs before rental pick-up. (e.) A credit card is REQUIRED to cover any insurance deductible as well as to guarantee rental payment. (See Credit Card requirements listed above). Name on policy must match credit card. Insurance coverage must extend coverage a minimum of one week past the scheduled return dates. Insurance certificates from carriers outside the United States will not be accepted.

REQUIREMENTS FOR RENTING

- ◆ **FEES:** All prices in this catalog are per day. A weekend is charged as one day. A week is charged as three days, depending on equipment. Some equipment is based on a four day week. Monthly rates are available upon request. Prices are subject to change without notice.
- ◆ **OUT OF TOWN RENTALS:** When the equipment is shipped by Samy's, the minimum billing is two working days. Rentals are shipped with air freight prepaid by the customer on the day of their choice. The equipment is to be returned via prepaid air freight and must be marked for delivery to Samy's Camera. We are not responsible for delays caused by the carrier. In the event of such delays, the renter is still responsible for all transportation and rental charges. If it is critical that the equipment be received by a certain date, we suggest shipping at least 48 hours in advance. NOTE: All equipment is thoroughly tested and operated before shipment. Air handling can be very hard on equipment and totally out of our control. In the event of malfunction, the renter is still responsible for transportation and rental costs.
- ◆ **LOSS OR THEFT:** Renters will be charged at the day rate on equipment that is lost or stolen until Samy's Camera is reimbursed for the replacement cost.
- ◆ **SPARE LAMPS:** There is no charge for spare lamps when available provided that burnt-out bulbs are returned. A charge will be made for missing lamps, broken lamps or filaments, or excessive burnouts.
- ◆ **RESERVATIONS & CANCELLATIONS:** Please call well in advance to reserve equipment for a future pickup. We cannot guarantee availability on short notice. Failure to cancel your order 24 hours prior to picking up will result in a full-day rental charge.

INSURANCE REQUIREMENTS

This Letter is to inform all clients that Samy's Camera requires either insurance, or a full credit card deposit, on all rental orders. Renters accept full responsibility for any loss, or repairs, due to damage while in the renter's possession. Insurance coverage is the responsibility of the renter. Proof of adequate insurance coverage for the full replacement value of the equipment will be required prior to the rental.

Insurance must name Samy's Camera as the "Loss Payee", as well as additionally insured. Coverage must include; explicitly "Miscellaneous Rented Equipment, Rented Equipment, Rented Or Leased Equipment". The insurance certificate must also provide the total amount of coverage and the deductible on the policy. Policies with "Untended Vehicle Disclaimers" will not be accepted. All insurance will be subject to verification and approval by Samy's management before any equipment is released. A credit card will be required to secure any deductible and rental fees for all clients without an in-house account. Name on policy must match credit card used to secure responsibilities.

Please contact your insurance agent for all of the required coverage by Samy's Camera. All certificates and forms need to be approved by Samy's management 24hrs prior to rental pick-ups. The verification process takes time, please plan accordingly. Insurance policies from outside the United States will not be accepted. All certificates must extend a minimum of one week past the scheduled return date.

This policy is in effect to protect you as well as Samy's Camera from any sizeable loss.

Thank you for your cooperation.

Discover Cinema EOS System



*Now Available
for Rent!*

CINEMA EOS

LEAVE NO STORY UNTOLD

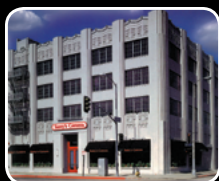
Canon

A new HD system for a new century, designed from the ground up to serve the evolving needs of the cinematography world.

This is the Canon Cinema EOS system.

Samy's Camera

RENTAL LOCATIONS



LOS ANGELES
(323) 938-4400
rentals@samys.com
431 S. FAIRFAX AVE.



PLAYA VISTA
(310) 450-7062
pvrentals@samys.com
12636 BEATRICE ST.



PASADENA
(626) 796-3300
pdrentals@samys.com
1759 E. COLORADO BLVD.



SANTA ANA
(714) 557-9400
sarentals@samys.com
3309 S. BRISTOL ST.



SANTA BARBARA
(805) 963-7269
sbrentals@samys.com
530 STATE ST.



SAN FRANCISCO
(415) 621-7400
sfrentals@samys.com
1090 BRYANT ST.